

# Multi Stage MS8

## Backward Curved, Single Inlet Centrifugal Fans

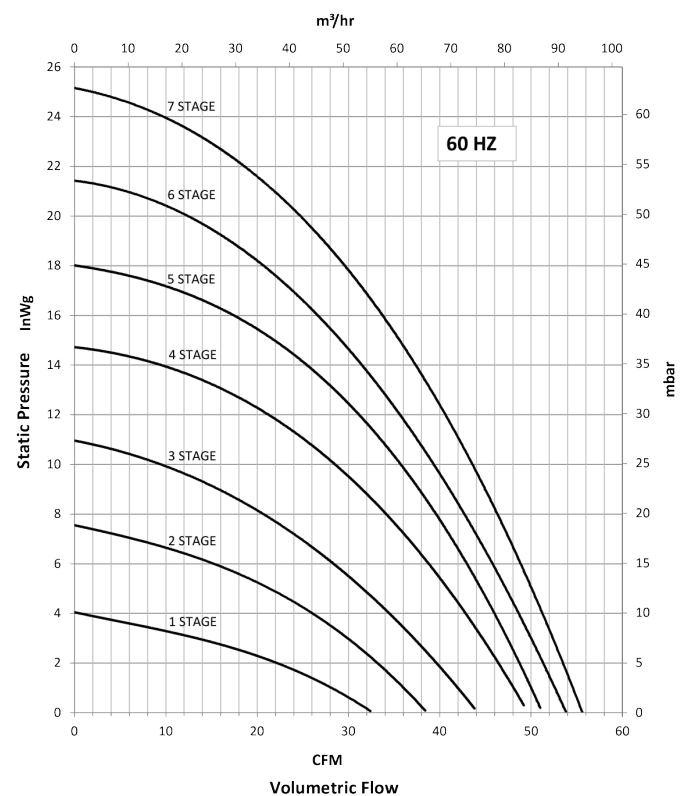
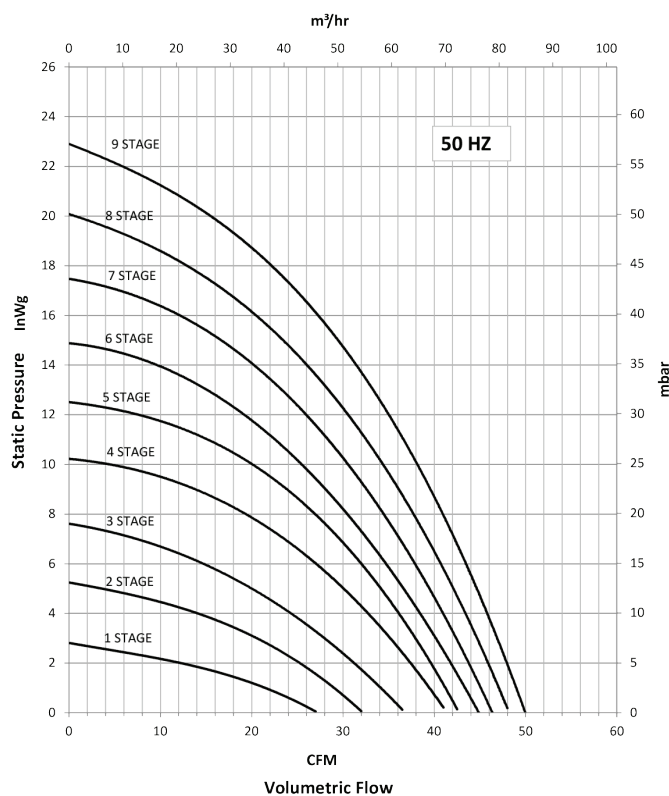
### General Characteristics:



[Please note - images above may not be representative of the unit supplied]

<b>Motor type:</b>	Induction type		
<b>Nominal supply:</b>	<b>Volts</b>	<b>Ph</b>	<b>Hz</b>
	115	1	50/60
	110-120	1	60
	220-240	1	50
	380-480	3	50/60
	(380-420/220-240)	3	50/60
	440-480/250-280)		
	220-250/380-400	3	50
<b>Options:</b>	Inlet and discharge guards, Sockets (BSP fittings), Inlet spigots, Hose, Adaptors, Filtered inlets, Speed controllers		
<b>Materials:</b>	Inlets & Fanscrolls: White polyester resin Impellers: Aluminium 1200 H14 Stators: White polyester resin		
<b>Bearings:</b>	Ball type, lubricated for life		
<b>Mounting options:</b>	Build-in- type / with feet / floor-stand		
<b>Noise levels:</b>	57-82dB(A) Free Air, IM		

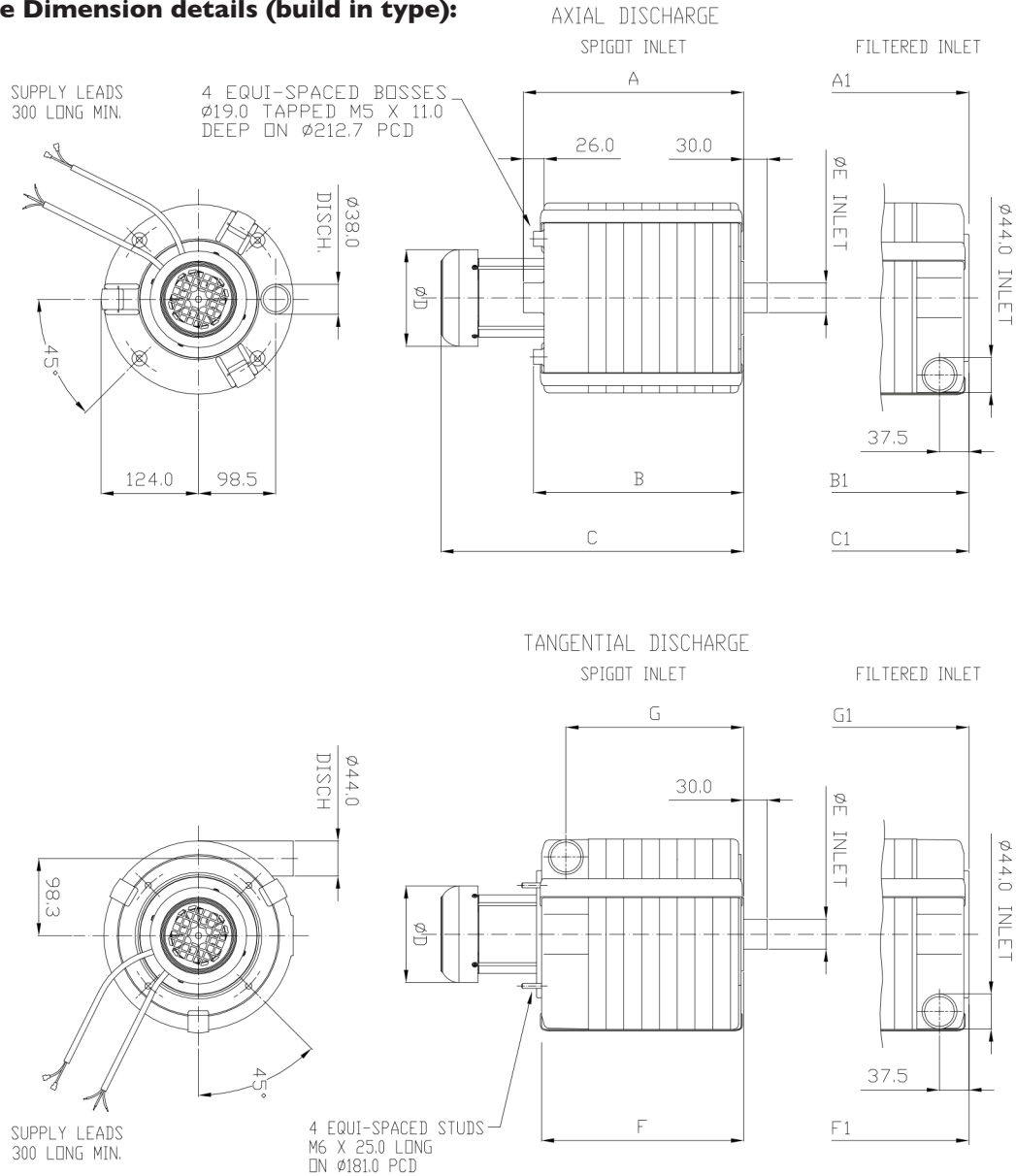
### Performance Details:



# Multi Stage MS8

## Backward Curved, Single Inlet Centrifugal Fans

### Outline Dimension details (build in type):



	A	A1	B	B1	C	C1	D	E	F	F1	G	G1
<b>1MS8</b>	99.5	155	86.5	142	195	250.5	123	Ø44/Ø38/Ø32	77	132.5	46	101.5
<b>2MS8</b>	122	177.5	109	164.5	217.5	273	123	Ø44/Ø38/Ø32	99.5	155	68.5	124
<b>3MS8</b>	145	200.5	132	187.5	240	295.5	123	Ø44/Ø38/Ø32	122	177.5	91	146.5
<b>4MS8</b>	167.5	222.5	154.5	210	262.5	318	123	Ø44/Ø38/Ø32	144.5	200	113.5	169
<b>5MS8</b>	190	245.5	177	232.5	285	340.5	123	Ø44/Ø38/Ø32	167	222.5	136	191.5
<b>6MS8</b>	212.5	298	200	285.5	317.5	373	123	Ø44/Ø38/Ø32	189.5	245	158.5	214
<b>7MS8</b>	235.5	321	222.5	308	340	395.5	123	Ø44/Ø38/Ø32	212	267.5	181	236.5
<b>8MS8</b>	258	343.5	245	330.5	362.5	418	123	Ø44/Ø38/Ø32	234.5	290	203.5	259
<b>9MS8</b>	280.5	366	267.5	353	385	440.5	123	Ø44/Ø38/Ø32	257	312.5	226	281.5

Please note (1) - all drawings measurements are in millimeters (mm)  
 Please note (2) - above technical specifications are subject to change

#### Air Control Industries Ltd

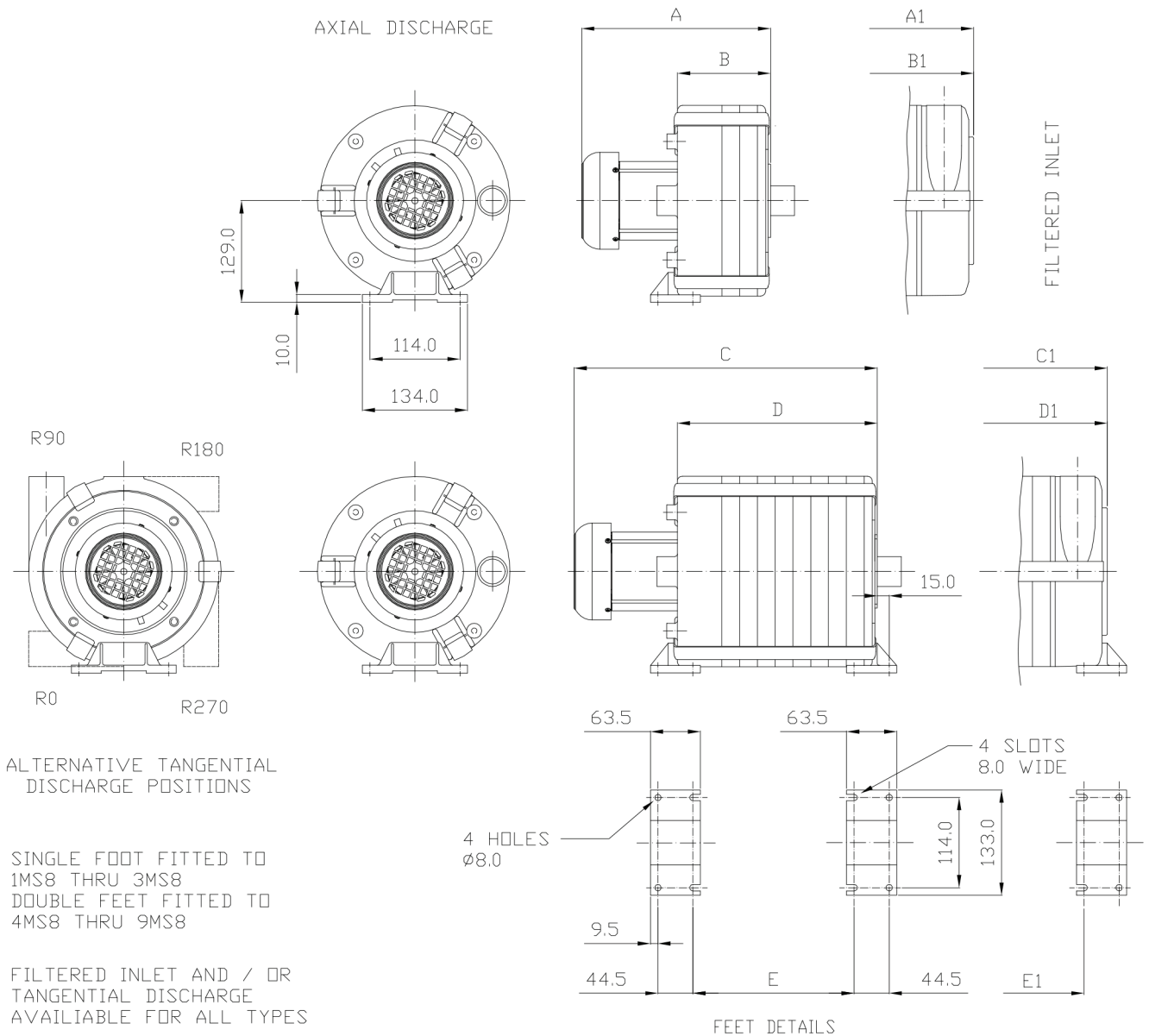
Weycroft Avenue, Millwey Rise Industrial Estate,  
 Axminster, Devon, EX13 5HU, United Kingdom  
 Tel: +44(0)1297 529242 Fax: +44(0)1297 529241  
 Email: sales@aircontrolindustries.com

[www.aircontrolindustries.com](http://www.aircontrolindustries.com)

# Multi Stage MS8

Backward Curved, Single Inlet Centrifugal Fans

**Outline Dimension details (feet mounted):**

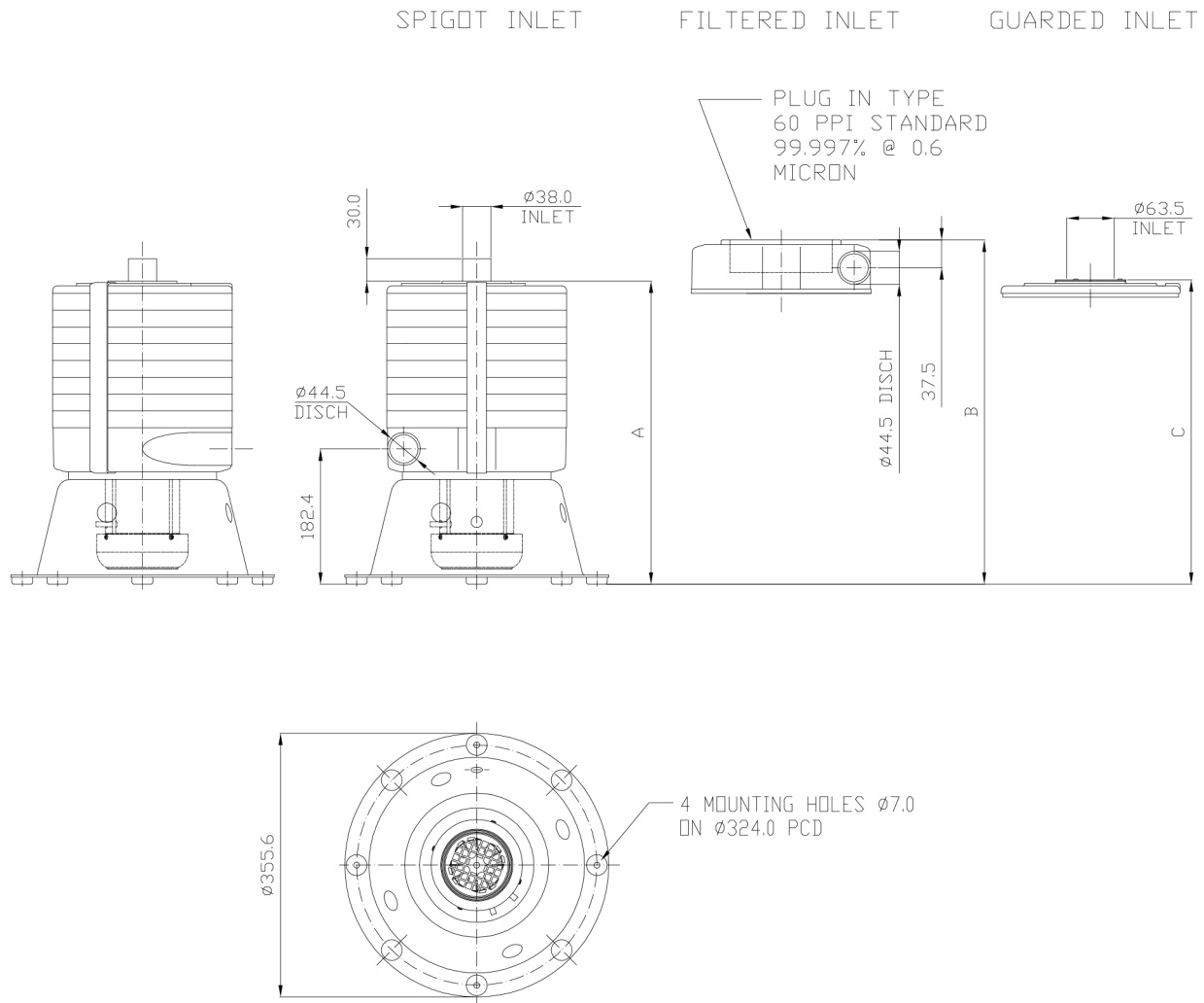


	A	A1	B	B1	C	C1	D	D1	E	E1
<b>1MS8</b>	195	250.5	73	128.5	-	-	-	-	-	-
<b>2MS8</b>	217.5	273	95.5	151	-	-	-	-	-	-
<b>3MS8</b>	240	295.5	118.5	174	-	-	-	-	-	-
<b>4MS8</b>	-	-	-	-	262.5	318	141	196.5	91.5	147
<b>5MS8</b>	-	-	-	-	285	340.5	163.5	219	114	169.5
<b>6MS8</b>	-	-	-	-	317.5	373	186.5	242	136.5	192
<b>7MS8</b>	-	-	-	-	340	395.5	209	264.5	159	214.5
<b>8MS8</b>	-	-	-	-	362.5	418	231.5	287	181.5	237
<b>9MS8</b>	-	-	-	-	385	440.5	254	309.5	204	259.5

# Multi Stage MS8

Backward Curved, Single Inlet Centrifugal Fans

**Outline Dimension details (floor stand):**



	A	B	C
<b>1MS8</b>	227.7	283.1	229.4
<b>2MS8</b>	250.3	305.7	252
<b>3MS8</b>	272.9	328.3	274.6
<b>4MS8</b>	295.5	350.9	297.2
<b>5MS8</b>	318.1	373.5	319.8
<b>6MS8</b>	340.7	396.1	342.4
<b>7MS8</b>	363.3	418.7	365
<b>8MS8</b>	385.9	441.3	387.6
<b>9MS8</b>	408.5	463.9	410.2

Please note (1) - all drawings measurements are in millimeters (mm)  
Please note (2) - above technical specifications are subject to change