

Multi Stage MS11/080

Backward Curved, Single Inlet Centrifugal Fans

General Characteristics:



[Please note - image above may not be representative of the unit supplied]

Motor type: Induction type, IPh, capacitor start and run

Nominal supply:	Volts	Ph	Hz
100	1	60	
110-115	1	50/60	
120	1	60	
240	1	50	
380-420/220-240	3	50/60	
440-480/250-280			

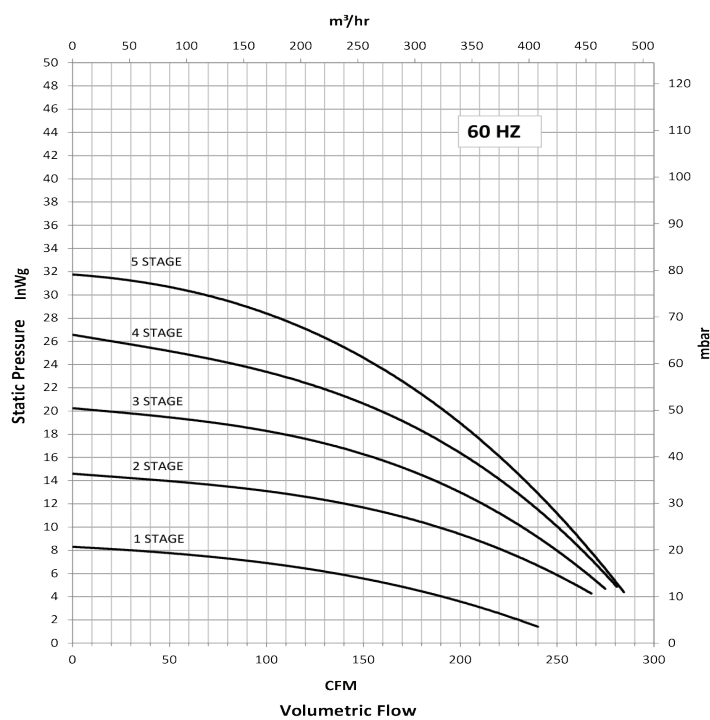
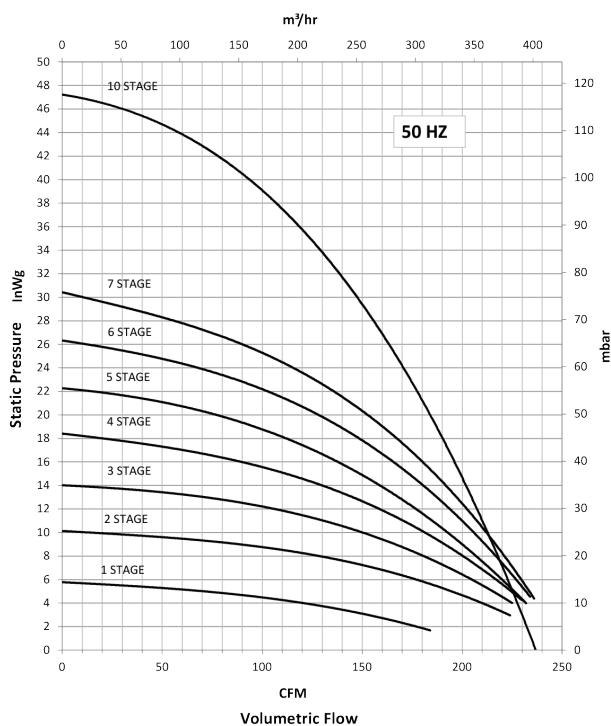
Options: Inlet and discharge guards and spigots

Materials: Inlets & Fanscrolls: Cast aluminium
Stators: White polyester resin
Impellers: Aluminium 1200 H14

Bearings: Ball type, lubricated for life

Mounting options: Build-in- type / with feet

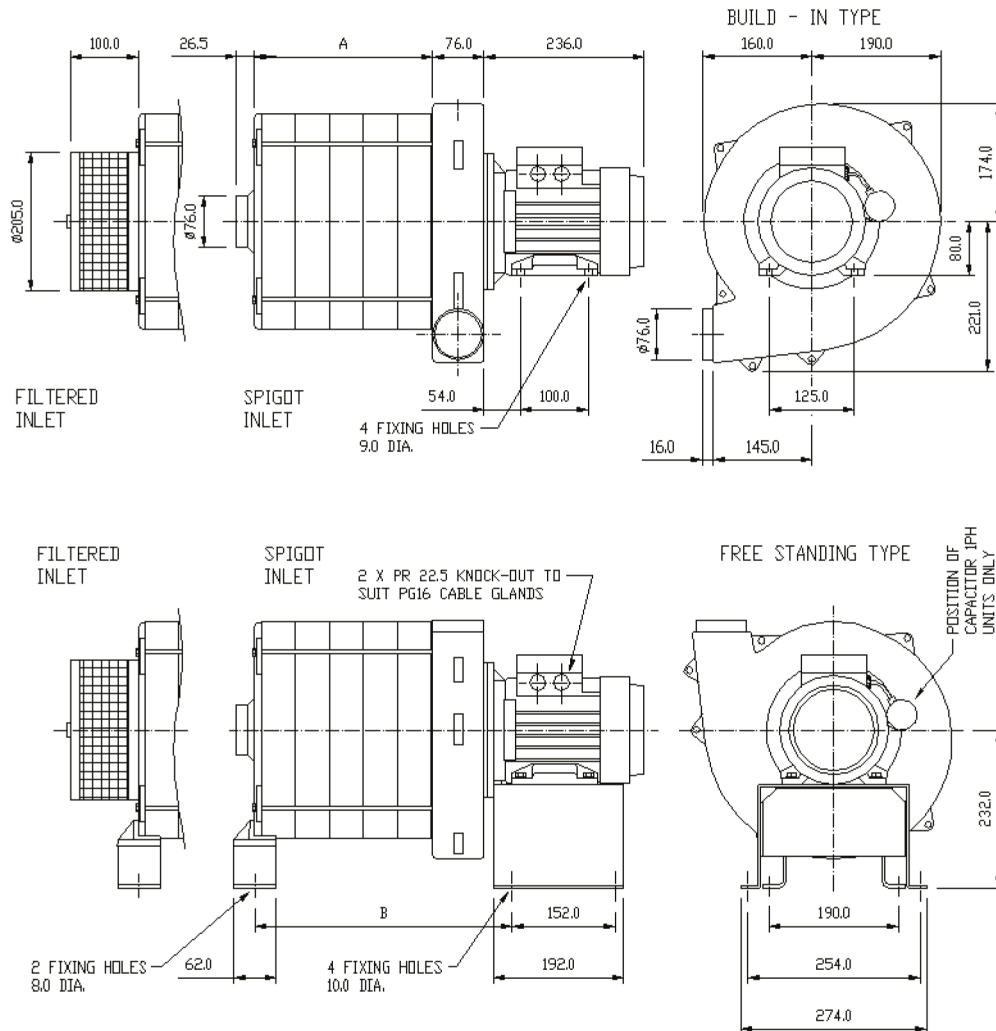
Performance Details:



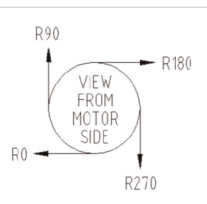
Multi Stage MS11/080

Backward Curved, Single Inlet Centrifugal Fans

Outline dimensions (build in and feet mounted):



Unit	A	B	WEIGHT KGS	PEDESTAL KGS	FILTERED INLET KGS
1MS11/080	15	-	9.5	10.5	12
2MS11/080	15	-	11	12	13.5
3MS11/080	65	-	13.5	14.5	16
4MS11/080	115	-	16	17	18.5
5MS11/080	165	280	18.5	20	21.5
6MS11/080	215	330	21	22.5	24
7MS11/080	265	380	23.5	25	26.5
10MS11/080	415	530	35	36.5	38



VIEW FROM MOTOR SIDE

FORWARD SUPPORT BRACKETS ONLY FITTED TO THESE TYPES

Please note (1) - all drawings measurements are in millimeters (mm)
Please note (2) - above technical specifications are subject to change

ref: MS11/080 2014/V1

Air Control Industries Ltd

Weycroft Avenue, Millwey Rise Industrial Estate,
Axminster, Devon, EX13 5HU, United Kingdom

Tel: +44(0)1297 529242 Fax: +44(0)1297 529241

Email: sales@aircontrolindustries.com

www.aircontrolindustries.com