

ACI/EV Industrial Fans

Intended for clean air, dust-laden air, pneumatic conveying and many other industrial applications, ACI's EV range is readily available in a choice of finishes and standards, including painted mild steel, ATEX and Stainless Steel versions.

The EV range can be either fitted with directly coupled AC motors (2, 4 or 6 pole according to duty) or supplied with extended shafts for belt driven applications. In addition ACI can also offer a wide range of options and accessories for this range, including flow control valves, flexible connectors, inlet guards and acoustic enclosures.

1. AP Series

Medium to high pressure centrifugal fans with direct or belt driven options.

APE 2 Pole:

- Flow rates up to 2,000M³/Hr (1,177cfm).
- Static Pressures up to 57"WG / 1450mm

APF 2 Pole:

- Flow rates up to 8,100M³/Hr (4,767cfm).
- Static Pressures up to 68"WG / 1730mm

APG 2 Pole:

- Flow rates up to 18,000M³/Hr (10,594cfm).
- Static Pressures up to 74"WG / 1880mm

APR (F-L)

- Flow rates up to 50,000M³/Hr (29,428cfm).
- Static Pressures up to 86"WG / 2200mmWG

Typical Applications:

Aeration, Agriculture, Heat Treatment, Ovens & Burners, Boilers, Chemical Processing, Composting, Cremators, Film Blowing, Fired Heaters, Fish Farms, Flotation Beds, Fluid Beds, Forge Blowers, Gas Boosting, Glass Blowing, Incinerators, Kilns, Powder Handling, Lamp Cooling, Land Fill, Printing, Shot-blasting, Airknives, UV Lamp Cooling, Washing Machines, Waste Separation/Density Separators, Food Processing and Test Chambers.



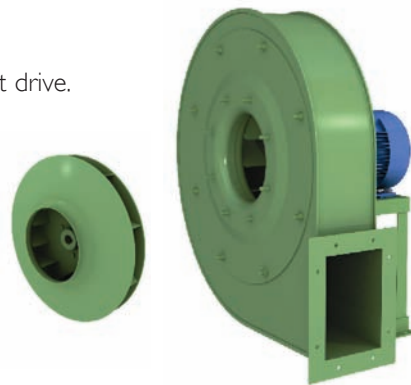
2. MPR Series

Low to medium pressure blower, low noise, reverse blade impeller with direct drive.

- Flow rates up to 5,500M³/Hr (3,237cfm)
- Static Pressures up to 18"WG / 450mmWG

Typical Applications:

Burners, Boilers, Chemical Processing, Composting, Cremators, Film Blowing, Fired Heaters, Fish Farms, Flotation Beds, Fluid Beds, Forge Blowers, Gas Boosting, Glass Blowing, Incinerators, Kilns, Powder Handling, Lamp Cooling, Land Fill, Printing, Shot-blasting, Airknives, UV Lamp Cooling, Washing Machines, Welding Fume Extraction.



3. BPR Series

Low pressure, high volume backward curved centrifugal fans. 2, 4 and 6 pole direct drive options are available with further belt driven alternatives.

- Flow rates up to 90,000M³/Hr (52,972cfm)
- Static Pressures up to 12"WG / 300mmWG

Typical Applications:

Cooling, Cremators, Dust Extraction, Exhausting, Filters, Fired Heaters, Fume Extraction, Air Handling, Test Chambers, Spray booths, HVAC.



ACI/EV Industrial Fans

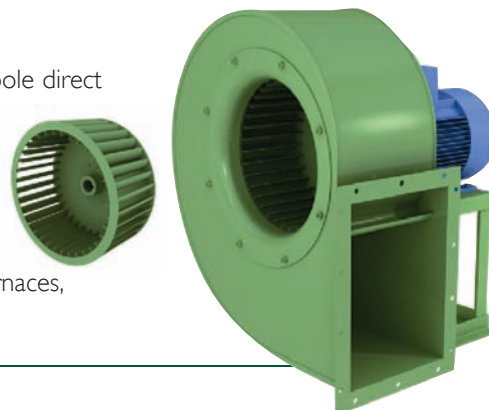
4. BP Series

Low pressure, high volume forward curved centrifugal blower. 2, 4 and 6 pole direct drive options are available with further belt driven alternatives.

- Flow rates up to 18,000M³/Hr (10,594cfm)
- Static Pressures up to 8"WG / 200mmWG

Typical Applications:

Cooling, Cremators, Exhausting, Filters, Fired Heaters, Fume Extraction, Furnaces, Air Handling, Test Chambers, Spray booths, HVAC.



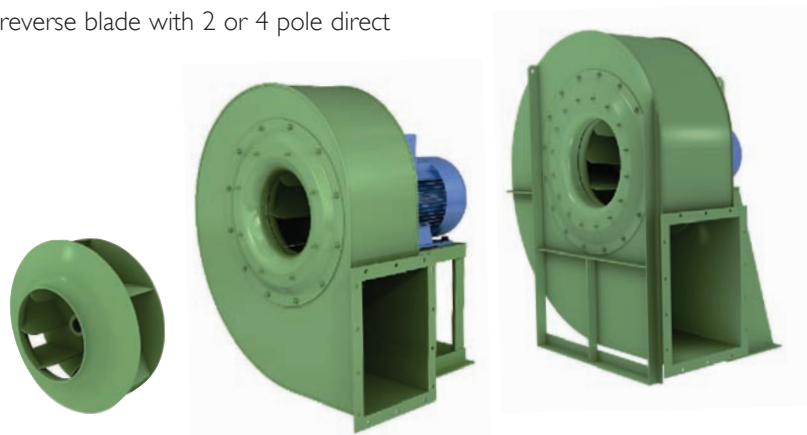
5. EU/EUM Series

Low to medium pressure, high volume blower, reverse blade with 2 or 4 pole direct drive or belt driven options.

- Flow rates up to 50,000M³/Hr (29,428cfm)
- Static Pressures up to 23"WG / 600mmWG

Typical Applications:

Cooling, Cremators, Dust Extraction, Exhausting, Filters, Fired Heaters, Flotation Beds, Fume Extraction, Incinerators, Air Handling, Test Chambers, Spray booths, HVAC.

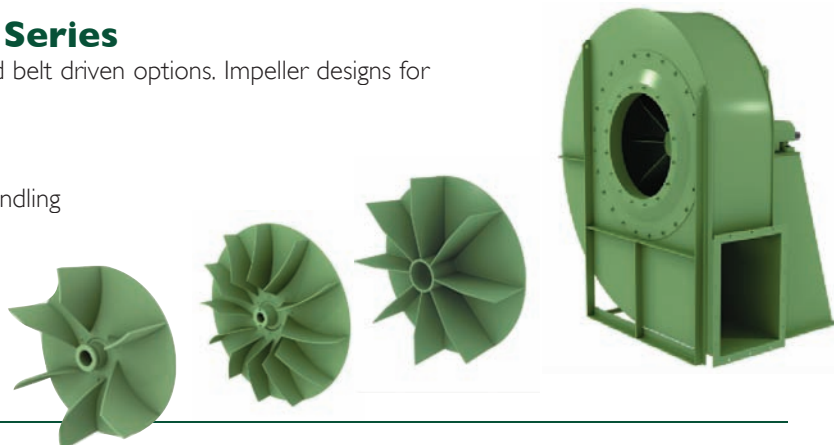


6. TQ/TPA/TF/TG/TH Series

Product conveying series – direct drive and belt driven options. Impeller designs for medium and high pressure.

Typical Applications:

Materials Handling, Power and Granule Handling



ACI/EV Industrial Fans

7. EVC Series

Axial-flow fan with light alloy die cast impeller with wing-profile blades. Single flange ducting drum, belt driven.

- Flow rates up to 65,000M³/Hr (38,257cfm)
- Static Pressures up to 2.75"WG / 70mmWG

Typical Applications:

Cooling, Fume Extraction, HVAC Ventilation, Spray booths, Cooling Coils.



8. EVP Series

Axial-flow fan with light alloy die cast impeller with wing-profile blades. Single flange ducting drum, directly coupled motor.

- Flow rates up to 6,000M³/Hr (3,531cfm)
- Static Pressures up to 0.756"WG / 20mmWG



9. EVF/EVL Series

Axial-flow fan with light alloy die-cast impeller with wing-profile blades. Double flange ducting drum, directly coupled motor.

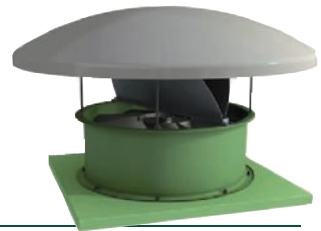
- Flow rates up to 75,000M³/Hr (44,143cfm)
- Static Pressures up to 3"WG / 75mmWG



10. EVT Series

Axial-flow fan with light alloy die-cast impeller with wing profile blades. Fibreglass roof, fitted with base for mounting.

- Flow rates up to 18,000M³/Hr (10,594cfm)
- Static Pressures up to 1.5"WG / 38mmWG



11. BT Series

A high-capacity centrifugal fan with wing-profile blades. Fibreglass roof, fitted with base for mounting.

- Flow rates up to 15,000M³/Hr (8,828cfm)
- Static Pressures up to 2"WG / 50mmWG



ACI/EV Industrial Fans

12. EV Range Accessories

A complete range of accessories are available, including:

- Acoustic Enclosures
- Inlet Discharge Regulators
- Air Reducing Flaps
- Gravity Shutters
- Fan Guards
- Inlet & Discharge Flexible Couplings
- Inlet Filters
- Anti-Vibration Mountings
- Inlet and Discharge Circular Spigot Connections



13. Other Types

Whatever your airflow requirements, big or small, we have a solution.



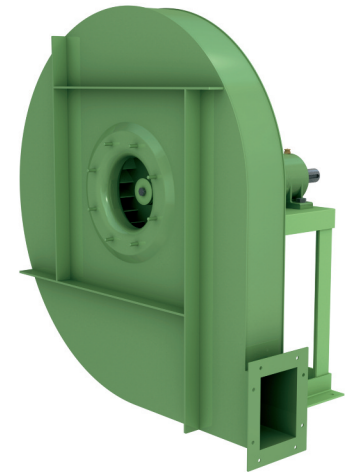
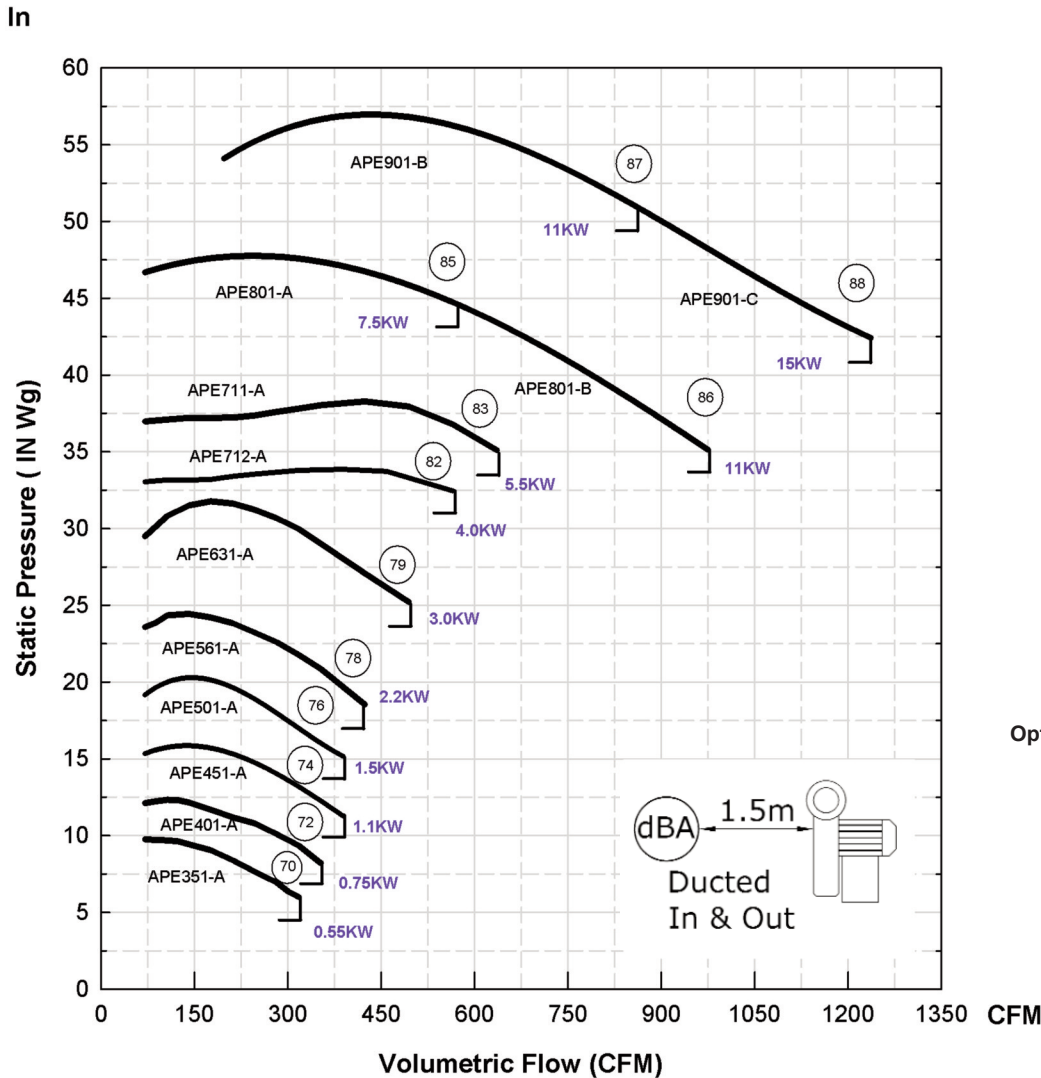
Air Control Industries Ltd
Weycroft Avenue, Millwey Rise Industrial Estate,
Axminster, Devon, EX13 5HU, United Kingdom
Tel: +44(0)1297 529242 Fax: +44(0)1297 529241
Email: sales@aircontrolindustries.com

www.aircontrolindustries.com

EV Radial Bladed Blowers

APE Series (APE351A-APE901B)

Performance curves - discharge side
Curve illustrated is for 2 pole (2900 RPM)



Centrifugal medium and high pressure blower with directly coupled motor

Optional Extras Include:

- Control Valves
- Inlet & Outlet Flexible Connectors
- Anti-vibration mountings
- Acoustic Enclosures
- Non Return Valve

Please note:

Pascal = (In.SWG x 249)
M³/Hr = (CFM x 1.699)

Noise level tolerances +3dB(A)

Description:

Centrifugal medium and high pressure blower with directly coupled motor.

Use:

This series of blowers are particularly suitable for pneumatic conveyances. In particular applications within cement factories, foundries, oil burners, mills, food factories, chemical, metallurgical and iron industries where small capacities with medium and high pressures are required.

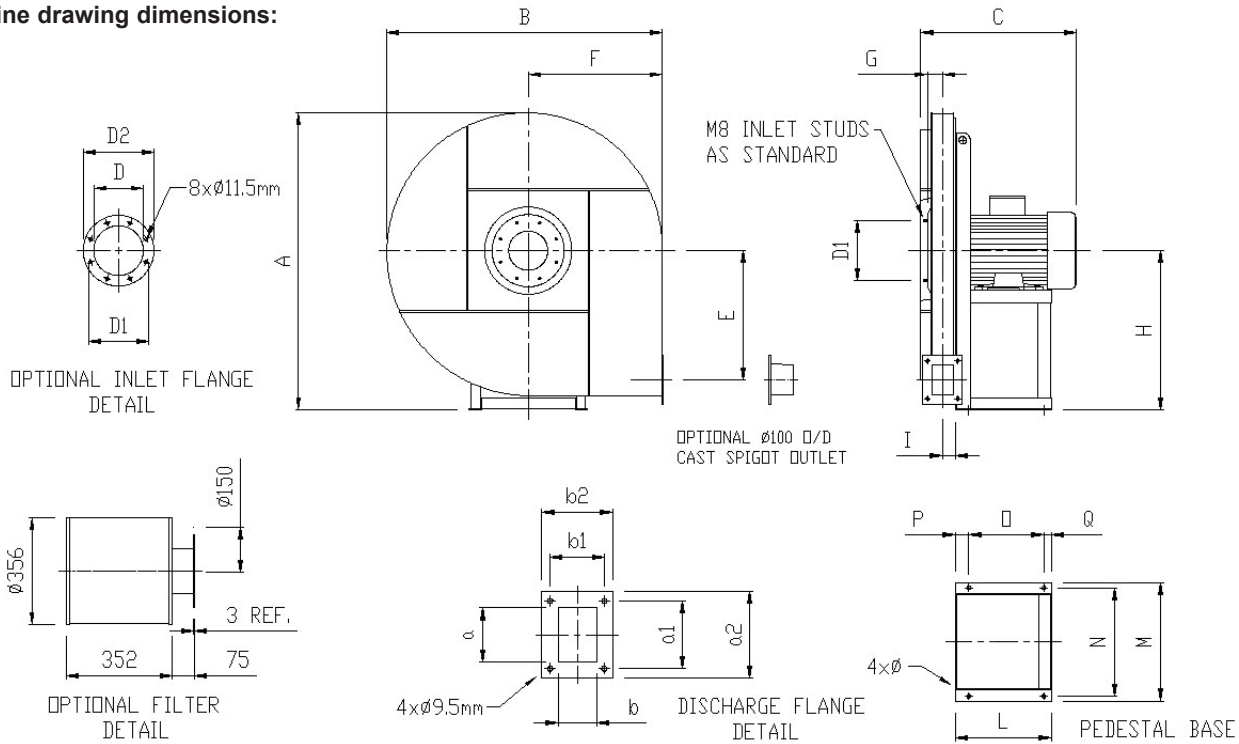
Please note:

- Maximum air temperature through fan is 80°C
- Higher temperatures can be achieved with a heat spinner arrangement. Please consult ACI's Technical Sales Department.

EV Radial Bladed Blowers

APE Series (APE351A-APE901B)

Outline drawing dimensions:



APE Range painted RAL6011 Green as standard [Other colours available upon request].

All APE Fans are revolvable.

Table of discharge angles:

LG								
	L0	L45	L90	L135	L180	L225	L270	L315
RD								
	R0	R45	R90	R135	R180	R225	R270	R315

Table for blower dimensions:

FAN	MOTOR	Fan								Base								Inlet Flange			Outlet Flange						Kg	Inlet Guard Part No.	Inlet Filter Silencer
		A	B	C	E	F	G	H/H ₁ & H ₂	I	L	M	N	O	P	Q	Ø	D	D ₁	D ₂	a	b	a ₁	b ₁	a ₂	b ₂				
APE 351/A	71 B2	560	520	310	223	250	42	300	38	190	235	215	125	50	15	10	145	182	215	90	63	112	90	150	123	30	EVP-001	0-1262	
APE 401/A	80 A2	560	520	330	223	250	42	300	38	190	235	215	125	50	15	10	145	182	215	90	63	112	90	150	123	34	EVP-001	0-1262	
APE 451/A	80 B2	670	620	330	280	300	42	355	38	190	235	215	125	50	15	10	145	182	215	90	63	112	90	150	123	45	EVP-001	0-1262	
APE 501/A	90 S2	670	620	370	280	300	42	355	38	215	270	245	137	60	18	10	145	182	215	90	63	112	90	150	123	48	EVP-001	0-1262	
APE 561/A	90 L2	790	730	390	330	355	46	425	42	215	270	245	137	60	18	10	165	200	235	100	71	125	100	160	131	67	EVP-002	0-1262	
APE 631/A	100 LA2	790	730	390	330	355	46	425	43	260	332	300	200	35	25	12	165	200	235	100	71	125	100	160	131	72	EVP-002	0-1262	
APE 712/A	112 M2	890	825	460	380	400	46	475	42	260	332	300	200	35	25	12	165	200	235	100	71	125	100	160	131	105	EVP-002	0-1262	
APE 711/A	132 SA2	890	825	460	380	400	46	475	42	320	392	360	250	45	25	12	165	200	235	100	71	125	100	160	131	120	EVP-002	0-1262	
APE 801/A	132 SB2	990	920	520	430	450	50	530	42	320	392	360	250	45	25	12	165	200	235	100	71	125	100	160	131	154	EVP-002	0-1262	
APE801/ B	132 MB2	990	920	520	430	450	50	530	42	320	392	360	250	45	25	12	165	200	235	100	71	125	100	160	131	160	EVP-002	0-1262	
APE 901/B	160 MR2	1180	1100	680	520	530	56	630	49	425	440	400	340	55	30	14	185	219	255	112	80	140	112	172	140	240	EVP-003	0-1262	
APE 901/C	160 M2	1180	1100	680	520	530	56	630	49	425	440	400	340	55	30	14	185	219	255	112	80	140	112	172	140	245	EVP-003	0-1262	

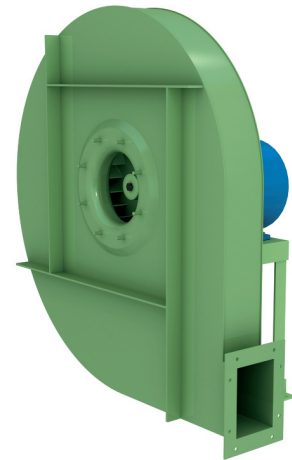
Please note (1) - all drawings measurements are in millimeters (mm)
 Please note (2) - above technical specifications are subject to change

AIR CONTROL INDUSTRIES LTD
 Weycroft Avenue, Millwey Industrial Estate,
 Axminster, Devon, EX13 5HU
 t: +44(0)1297 529242 f: +44(0)1297 529241
 e: sales@aircontrolindustries.com
 w: www.aircontrolindustries.com

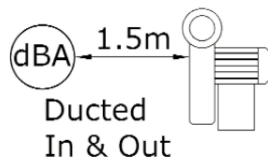
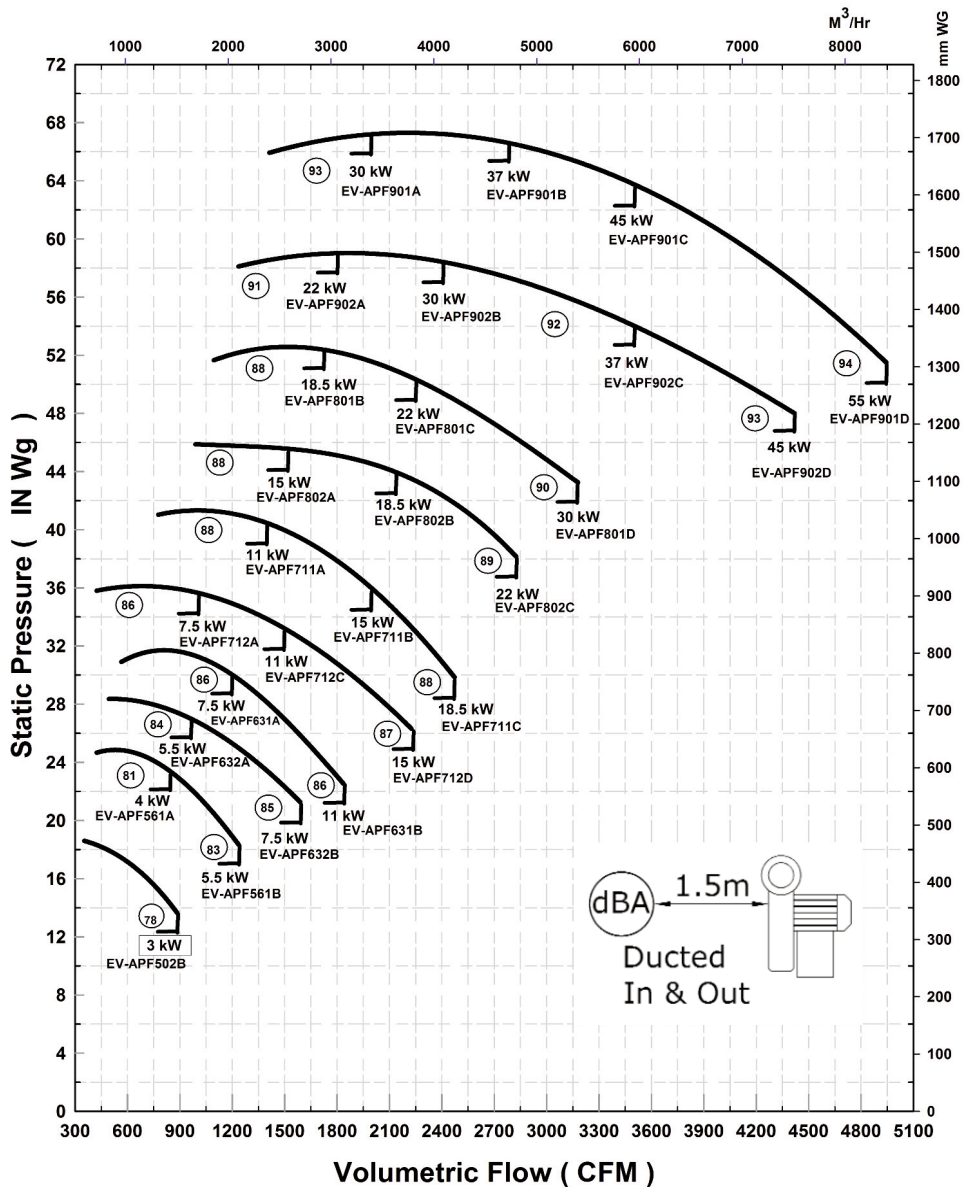
EV Radial Bladed Blowers

APF Series (APF502B-APF901D)

Performance curves - discharge side only
Curve illustrated is for 2 pole (2900 RPM)



Centrifugal medium and high pressure blower with directly coupled motor.



Optional Extras Include:

- Control Valves
- Inlet & Outlet Flexible Connectors
- Anti-vibration mountings
- Acoustic Enclosures
- Non Return Valve

Please note:

Pascal = (In.SWG x 249)
M³/Hr = (CFM x 1.699)

Noise level tolerances +3dB(A)

Description:

Centrifugal medium and high pressure blower with directly coupled motor.

Use:

This series of blowers are particularly suitable for pneumatic conveyances. In particular applications within cement factories, foundries, oil burners, mills, food factories, chemical, metallurgical and iron industries where small capacities with medium and high pressures are required.

Please note:

- Maximum air temperature through fan is 80°C
- Higher temperatures can be achieved with a heat spinner arrangement. Please consult ACI's Technical Sales Department.

EV Radial Bladed Blowers

APF Series (APF502B-APF901D)

Outline drawing dimensions:

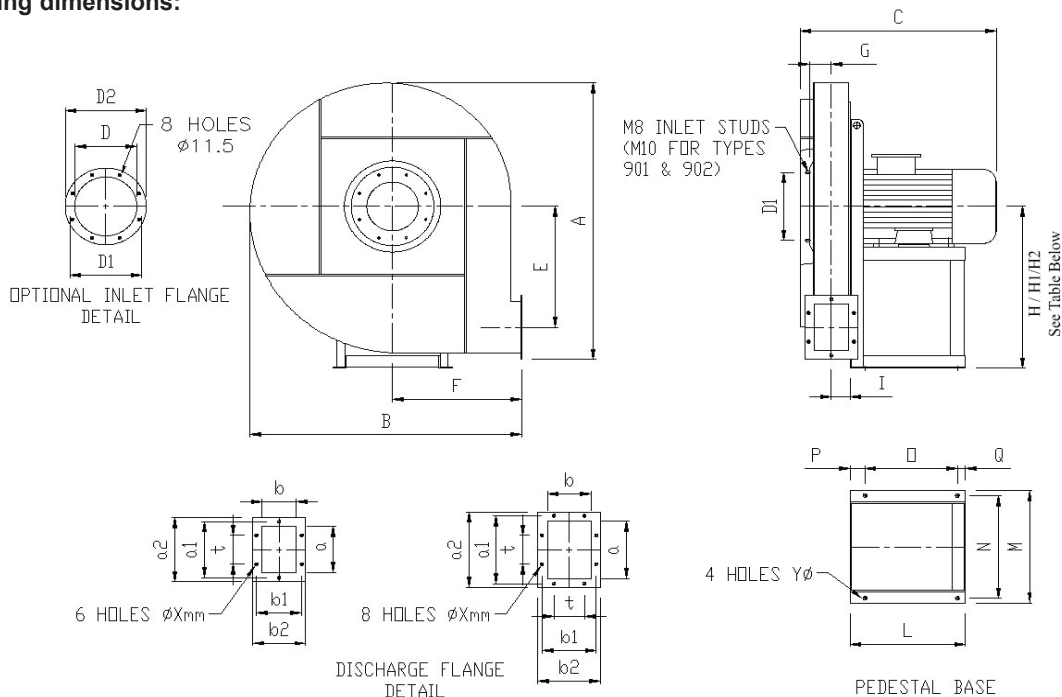


Table of discharge angles:

APF Range painted RAL6011 Green as standard. [Other colours available upon request]

All APF Fans are revolvable.

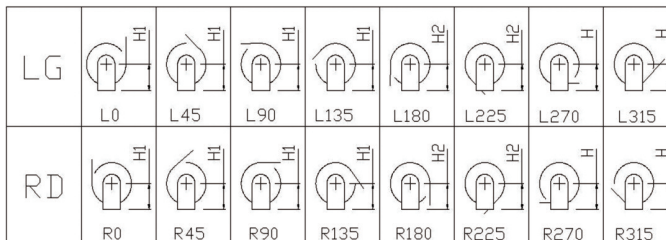


Table for blower dimensions:

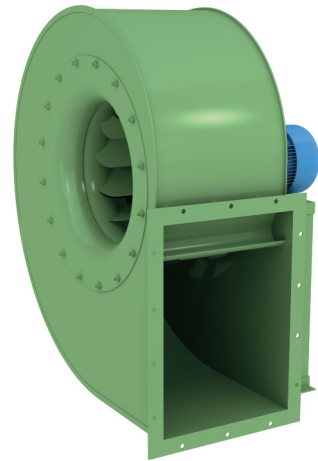
Type		Fan										Base								Inlet Flange			Outlet Flange								Weight	Inlet Guard
Fan	Motor	A	B	C	E	F	G	H	H ₁	H ₂	I	L	M	N	O	P	Q	Y	D	D ₁	D ₂	a	b	a ₁	b ₁	a ₂	b ₂	t	N°	x	kg	
APF 502/B	100 LA2	800	735	475	337	355	61	450	450	450	53	260	332	300	200	35	25	12	165	200	235	125	90	165	130	185	150	100	6	9.5	68	EVP-002
APF 561/A	112 M2	900	830	490	380	400	65	500	500	500	58	260	332	300	200	35	25	12	185	219	255	140	100	182	141	210	170	112	6	11.5	88	EVP-003
APF 561/B	132 SA2										58	320	392	360	250	45	25	12													100	182
APF 632/A	132 SA2	1000	900	565	420	425	71	560	560	560	63	320	392	360	250	45	25	12	205	241	275	160	112	200	153	230	182	112	6	11.5	106	EV-RP 200
APF 632/B	132 SB2										63	320	392	360	250	45	25	12													200	
APF 631/A	132 SB2	1000	900	565	420	425	71	560	560	560	63	320	392	360	250	45	25	12	205	241	275	160	112	200	153	230	182	112	6	11.5	115	EV-RP 200
APF 631/B	132 MB2										63	320	392	360	250	45	25	12													200	
APF 712/A	160 MR2	1120	1010	725	470	475	80	630	630	630	71	425	440	400	340	55	30	14	229	265	299	180	125	219	167	250	195	112	6	11.5	153	EV-RP200
APF 712/C	160 MR2										71	425	440	400	340	55	30	14													219	
APF 712/D	160 M2	1120	1010	725	470	475	80	630	630	630	71	425	440	400	340	55	30	14	229	265	299	180	125	219	167	250	195	112	6	11.5	240	EV-RP200
APF 711/A	160 MR2										71	425	440	400	340	55	30	14													219	
APF 711/B	160 M2	1120	1010	725	470	475	80	630	630	630	71	425	440	400	340	55	30	14	229	265	299	180	125	219	167	250	195	112	6	11.5	240	EV-RP200
APF 711/C	160 L2										71	425	440	400	340	55	30	14													219	
APF 802/A	160 M2	1250	1120	740	530	530	90	710	710	710	80	425	440	400	340	55	30	14	255	292	325	200	140	241	182	270	210	112	8	11.5	285	EV-RP200
APF 802/B	160 L2										80	425	440	400	340	55	30	14													241	
APF 802/C	180 M2	1250	1120	740	530	530	90	710	710	710	80	470	500	450	370	65	35	14	255	292	325	200	140	241	182	270	210	112	8	11.5	340	EV-RP200
APF 801/B	160 L2										80	425	440	400	340	55	30	14													241	
APF 801/C	180 M2	1250	1120	740	530	530	90	710	710	710	80	470	500	450	370	65	35	14	255	292	325	200	140	241	182	270	210	112	8	11.5	355	EV-RP200
APF 801/D	200 LR2										80	500	570	510	385	75	40	16													241	
APF 902/A	180 M2	1410	1265	765	598	600	103	800	710	710	90	470	500	450	370	65	35	14	286	332	366	224	160	265	200	294	230	112	8	11.5	405	EVP-011
APF 902/B	200 LR2										90	500	570	510	385	75	40	16													265	
APF 902/C	200 L2	1410	1265	840	598	600	103	800	710	710	90	500	570	510	385	75	40	16	286	332	366	224	160	265	200	294	230	112	8	11.5	485	EVP-011
APF 902/D	225 M2										90	550	626	565	425	85	40	19													265	
APF 901/A	200 LR2	1410	1265	840	598	600	103	800	710	710	90	500	570	510	385	75	40	16	286	332	366	224	160	265	200	294	230	112	8	11.5	485	EVP-011
APF 901/B	200 L2										90	500	570	510	385	75	40	16													265	
APF 901/C	225 M2	1410	1265	915	598	600	103	800	710	710	90	550	626	565	425	85	40	19	286	332	366	224	160	265	200	294	230	112	8	11.5	530	EVP-011
APF 901/D	250 M2										90	600	686	615	450	95	45	21													265	

Please note (1) - all drawings measurements are in millimeters (mm)
 Please note (2) - above technical specifications are subject to change

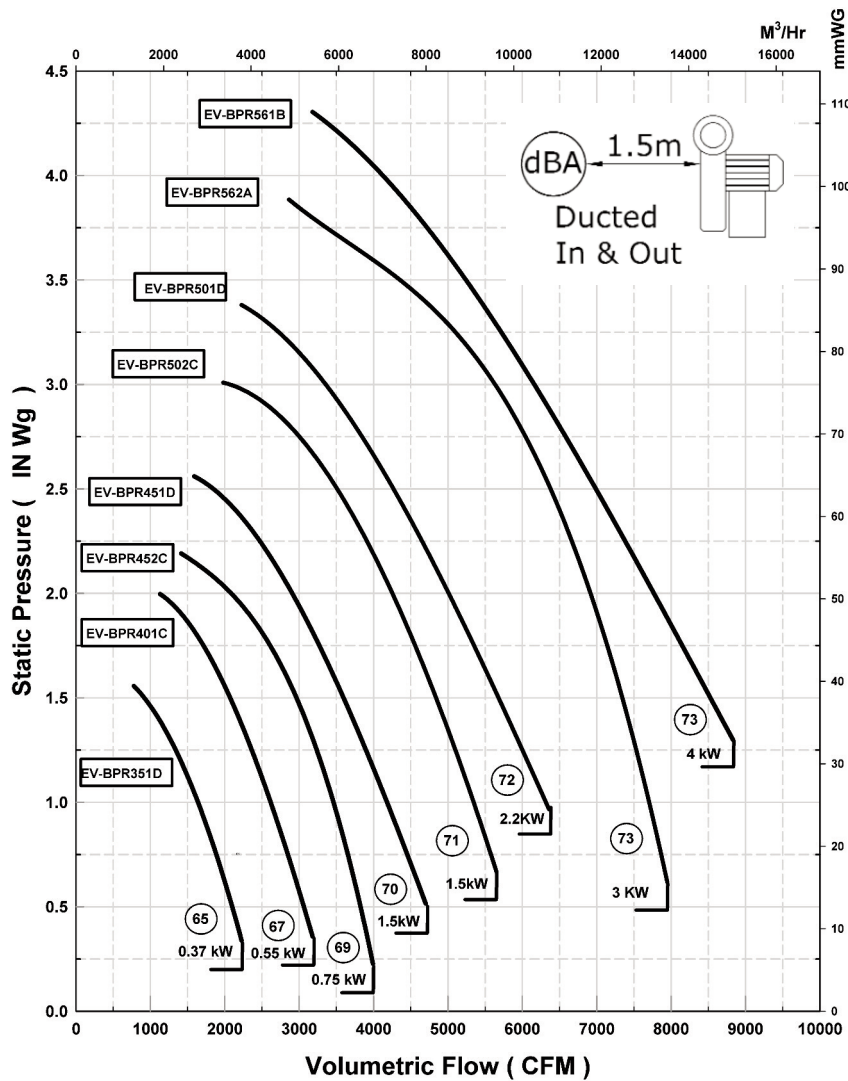
EV Radial Bladed Blowers

BPR 4 Pole Series (BPR351D-561B)

Performance curves - inlet / discharge side
Curve illustrated is for 4 pole (1450 RPM)



Low-pressure centrifugal fan / High efficiency and low-noise reverse blade impeller / Directly coupled motor



Optional Extras Include:

- Control Valves
- Inlet & Outlet Flexible Connectors
- Anti-vibration mountings
- Non Return Valves

Please note:

Pascal = (In.SWG x 249)
M³/Hr = (CFM x 1.699)

Noise level tolerances +3dB(A)

Description:

Low-pressure centrifugal fan. High efficiency and low-noise reverse blade impeller. Directly coupled motor.

Use:

This series of blowers are particularly suitable for aspiration of clean and slightly dusty air.

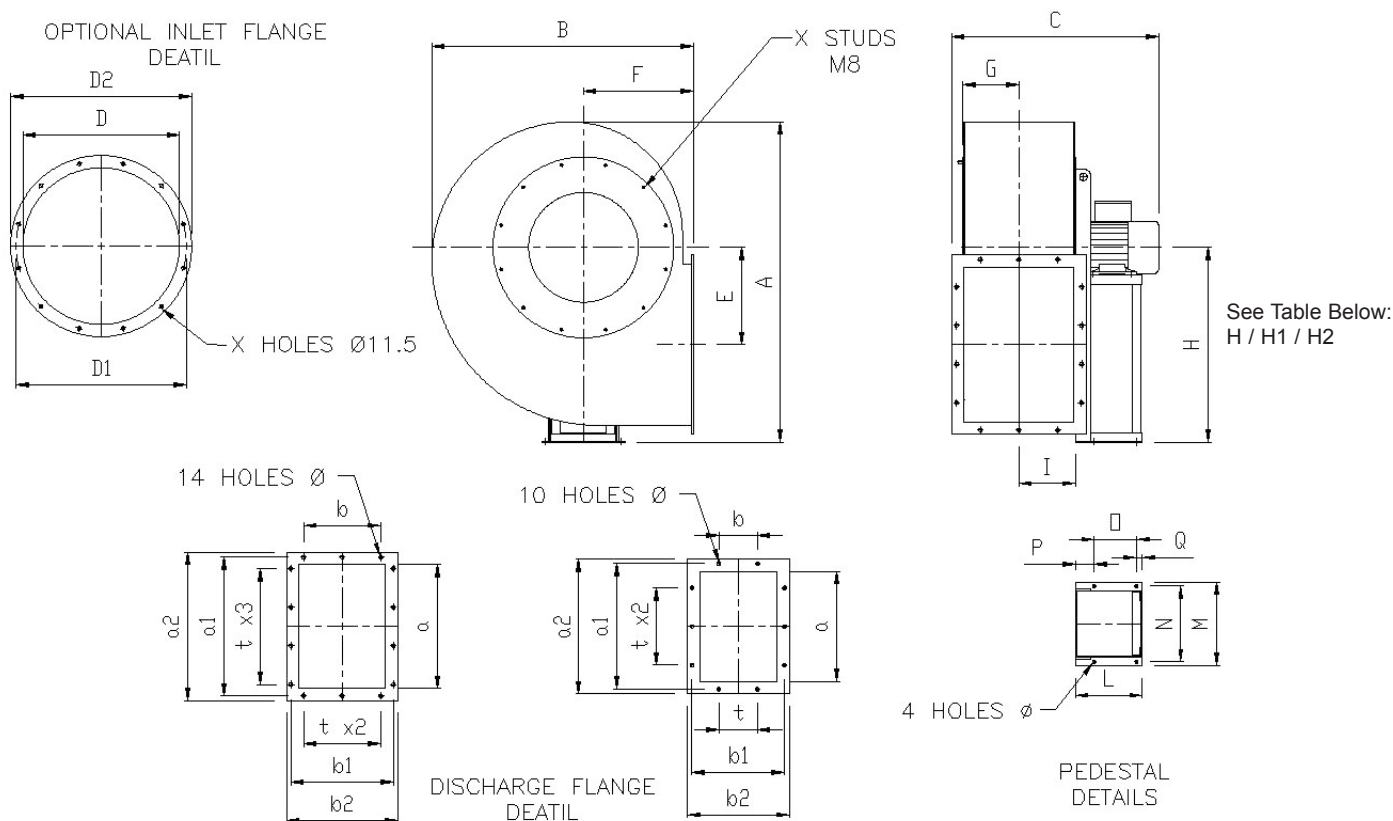
Please note:

- Maximum air temperature through fan is 80°C without cooling fan, and 150°C with cooling fan. Please consult ACI's Technical Sales Department.

EV Radial Bladed Blowers

BPR 4 Pole Series (BPR351D-561B)

Outline drawing dimensions:



See Table Below:
H / H1 / H2

Viewed from motor side

Table of discharge angles (* Options may incur additional cost)

BPR Range painted RAL6011 Green as standard. [Other colours available upon request.]

All BPR Fans are revolable.

* If AV mountings are required, a front pedestal/foot is necessary for support (details on request)

LG								
	L0	L45	L90	L135	L180	L225	L270	L315
RD								
	R0	R45	R90	R135	R180	R225	R270	R315

Table for blower dimensions:

Type		Fan										Base				Inlet Flange				Discharge Flange								Approx Weight					
Fan	Motor	A	B	C	E	F	G	H	H1	H2	I	L	M	N	N1	O	P	Q	Ø	D	D1	D2	X	a	b	a1	b1	a2	b2	t	Qty	Ø	(Kgs)
BPR 351/D	71 B4	740	620	500	225	265	130	450	450	265	132	190	235	215		125	50	15	10	361	405	441	8	355	250	405	300	435	330	125	10	11.5	58
BPR 401/C	80 A4	830	695	560	250	300	146	500	500	300	148	190	235	215		125	50	15	10	405	448	485	8	400	280	448	332	480	360	125	14	11.5	69
BPR 452/C	80 A4	930	780	600	280	335	164	560	560	335	166	190	235	215		125	50	15	10	455	497	535	12	450	315	497	366	530	395	125	14	11.5	84
BPR 451/D	90 S4			635								215	270	245																125		11.5	
BPR 502/C	90 L4	1040	850	675	315	355	184	630	630	355	186	215	270	245		137	60	18	10	505	551	585	12	500	355	551	405	580	435	125	14	11.5	110
BPR 501/D	100 LA4			745								260	332	300																125		11.5	
BPR 562/A	100 LB4	1170	955	800	355	400	207	710	560	400	208	260	332	300		200	35	25	12	566	629	666	16	560	400	629	464	660	500	160	14	14	136
BPR 561/B	112 M4											260	332	300																		200	

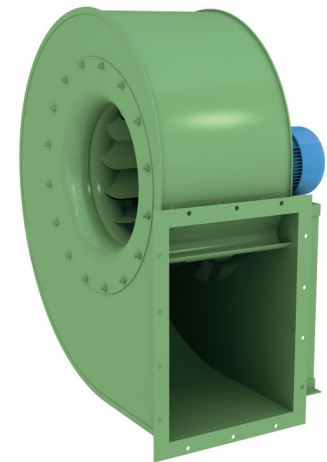
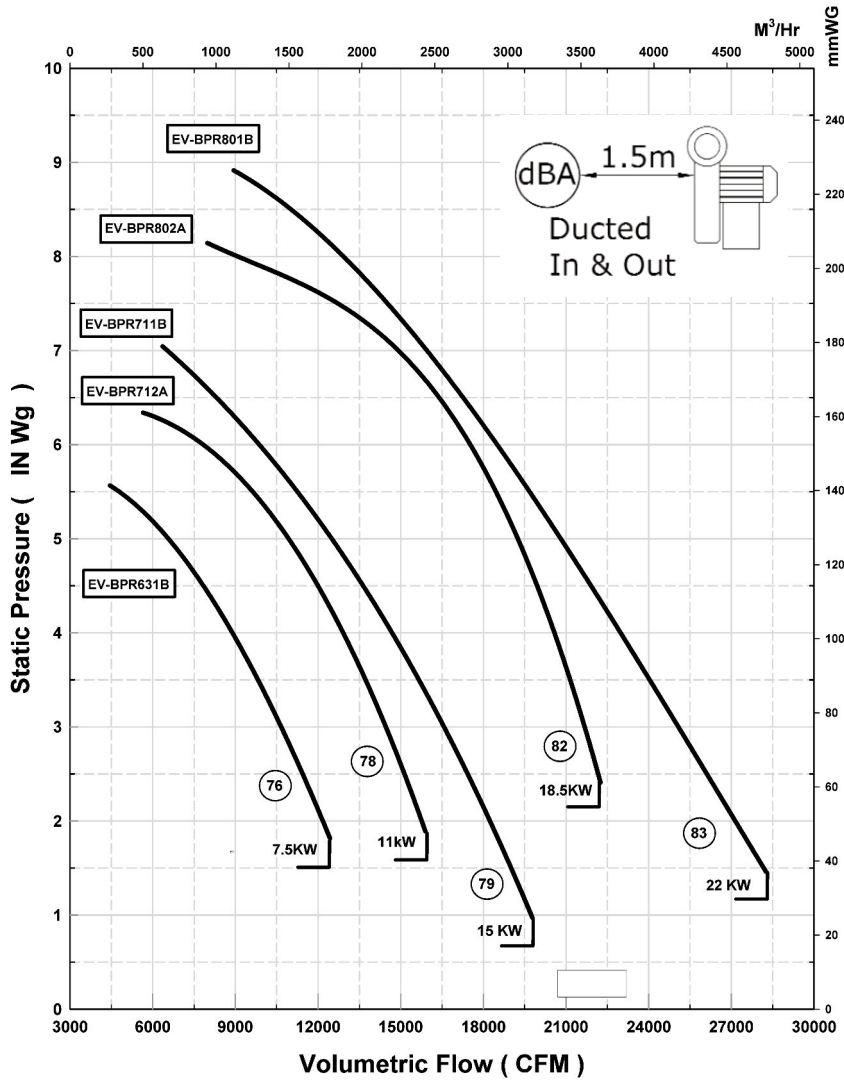
Please note (1) - all drawings measurements are in millimeters (mm)
Please note (2) - above technical specifications are subject to change

AIR CONTROL INDUSTRIES LTD
 Weycroft Avenue, Millwey Industrial Estate,
 Axminster, Devon, EX13 5HU
 t: +44(0)1297 529242 f: +44(0)1297 529241
 e: sales@aircontrolindustries.com
 w: www.aircontrolindustries.com

EV Radial Bladed Blowers

BPR 4 Pole Series (BPR631B-801B)

Performance curves - inlet / discharge side
Curve illustrated is for 4 pole (1450 RPM)



Low-pressure centrifugal fan / High efficiency and low-noise reverse blade impeller / Directly coupled motor

Optional Extras Include:

- Control Valves
- Inlet & Outlet Flexible Connectors
- Anti-vibration mountings
- Non-return Valves

Please note:

Pascal = (In.SWG x 249)
M³/Hr = (CFM x 1.699)

Noise level tolerances +3dB(A)

Description:

Low-pressure centrifugal fan. High efficiency and low-noise reverse blade impeller. Directly coupled motor.

Use:

This series of blowers are particularly suitable for aspiration of clean and slightly dusty air.

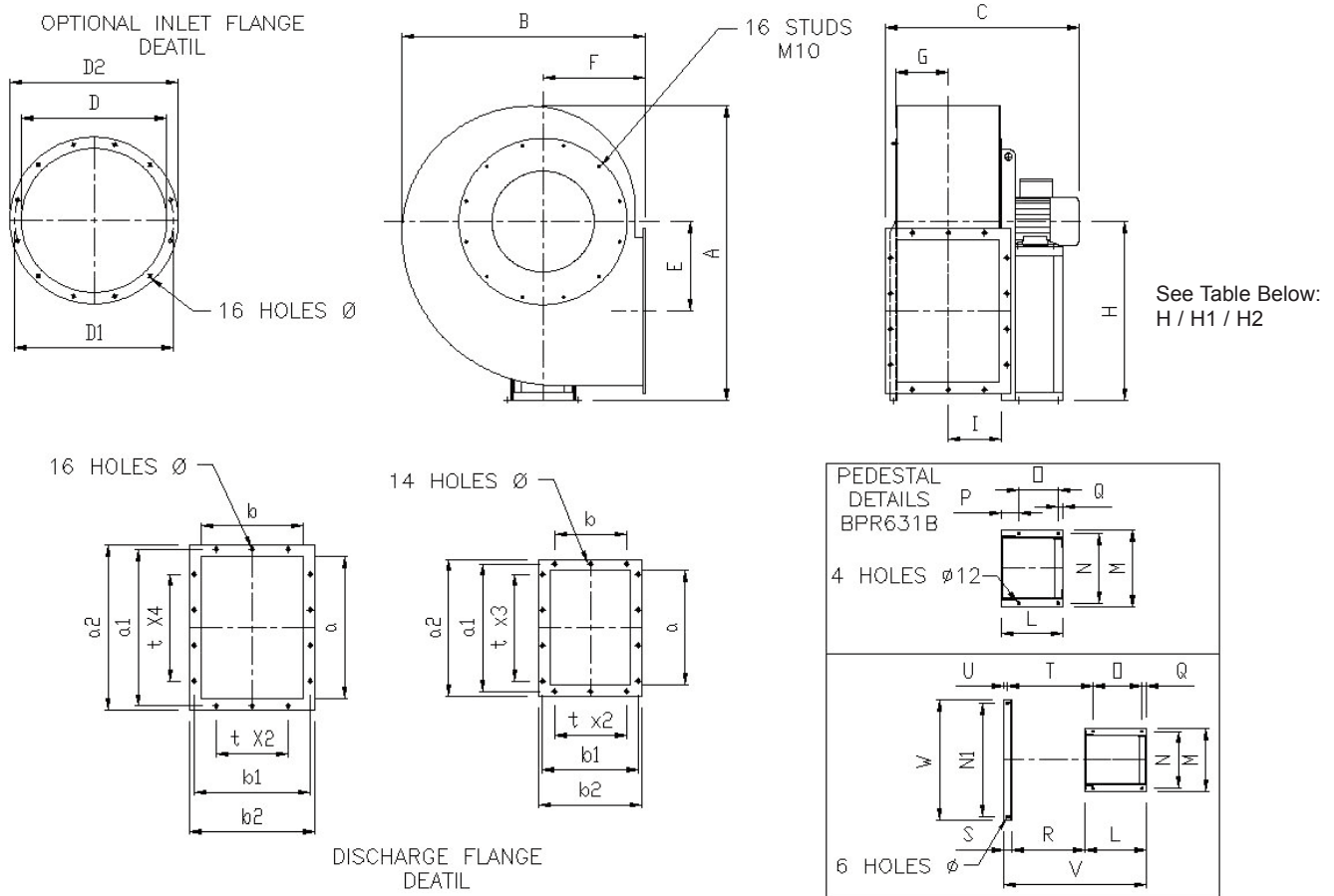
Please note:

- Maximum air temperature through fan is 80°C without cooling fan, and 150°C with cooling fan. Please consult ACI's Technical Sales Department.

EV Radial Bladed Blowers

BPR 4 Pole Series (BPR631B-801B)

Outline drawing dimensions:



BPR Range painted RAL6011 Green as standard. [Other colours available upon request.]

All BPR Fans are revolable.

* If AV mountings are required, a front pedestal/foot is necessary for support (details on request)

Viewed from motor side
Table of discharge angles (* Options may incur additional cost)

LG				*	*			
RD				*	*			
	L0	L45	L90	L135	L180	L225	L270	L315
	R0	R45	R90	R135	R180	R225	R270	R315

Table for blower dimensions:

Type		Fan										Base										Inlet Flange				Discharge Flange						Weight							
Fan	Motor	A	B	C	E	F	G	H	H1	H2	I	L	M	N	N1	O	P	Q	R	S	T	U	V	W	Ø	D	D1	D2	Ø	a	b	a1	b1	a2	b2	t	Qty	Ø	Kgs
BPR 631/B	132 MA4	1320	1080	910	400	450	230	800	630	450	235	320	392	360	-	250	45	25	-	-	-	-	-	-	-	636	698	736	11.5	630	450	698	513	730	550	-	14	14	200
BPR 712/A	160 M4	1490	1200	1100	450	500	260	900	710	500	260	425	440	400	800	340	-	30	514	50	595	25	989	850	14	716	775	816	13	710	500	775	567	810	600	160	16	14	321
BPR 711/B	160 L4																								14											16			
BPR 802/A	180 M4	1650	1340	1240	500	560	286	1000	800	560	283	470	930	870	870	370	-	35	566	60	668	30	1103	-	17	806	861	906	11.5	800	560	871	639	920	680	200	14	14	425
BPR 801/B	180 L4																								17														

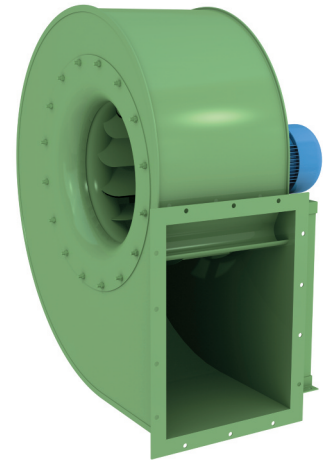
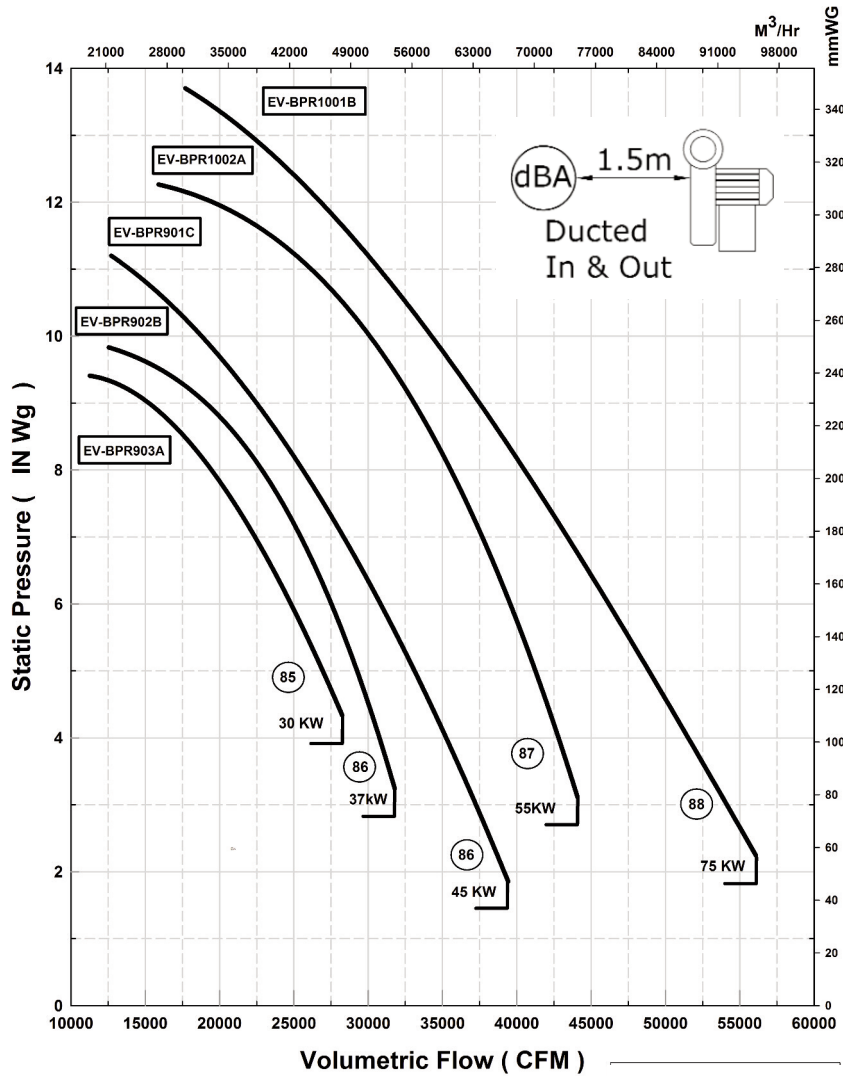
Please note (1) - all drawings measurements are in millimeters (mm)
Please note (2) - above technical specifications are subject to change

EV Radial Bladed Blowers

BPR 4 Pole Series (BPR903A-1001B)

Performance curves - inlet / discharge side

Curve illustrated is for 4 pole (1450 RPM)



Low-pressure centrifugal fan / High efficiency and low-noise reverse blade impeller / Directly coupled motor.

Optional Extras Include:

- Control Valves
- Inlet & Outlet Flexible Connectors
- Anti-vibration mountings

Please note:

Pascal = (In.SWG x 249)

M³/Hr = (CFM x 1.699)

Noise level tolerances +3dB(A)

Description:

Low-pressure centrifugal fan. High efficiency and low-noise reverse blade impeller. Directly coupled motor.

Use:

This series of blowers are particularly suitable for aspiration of clean and slightly dusty air.

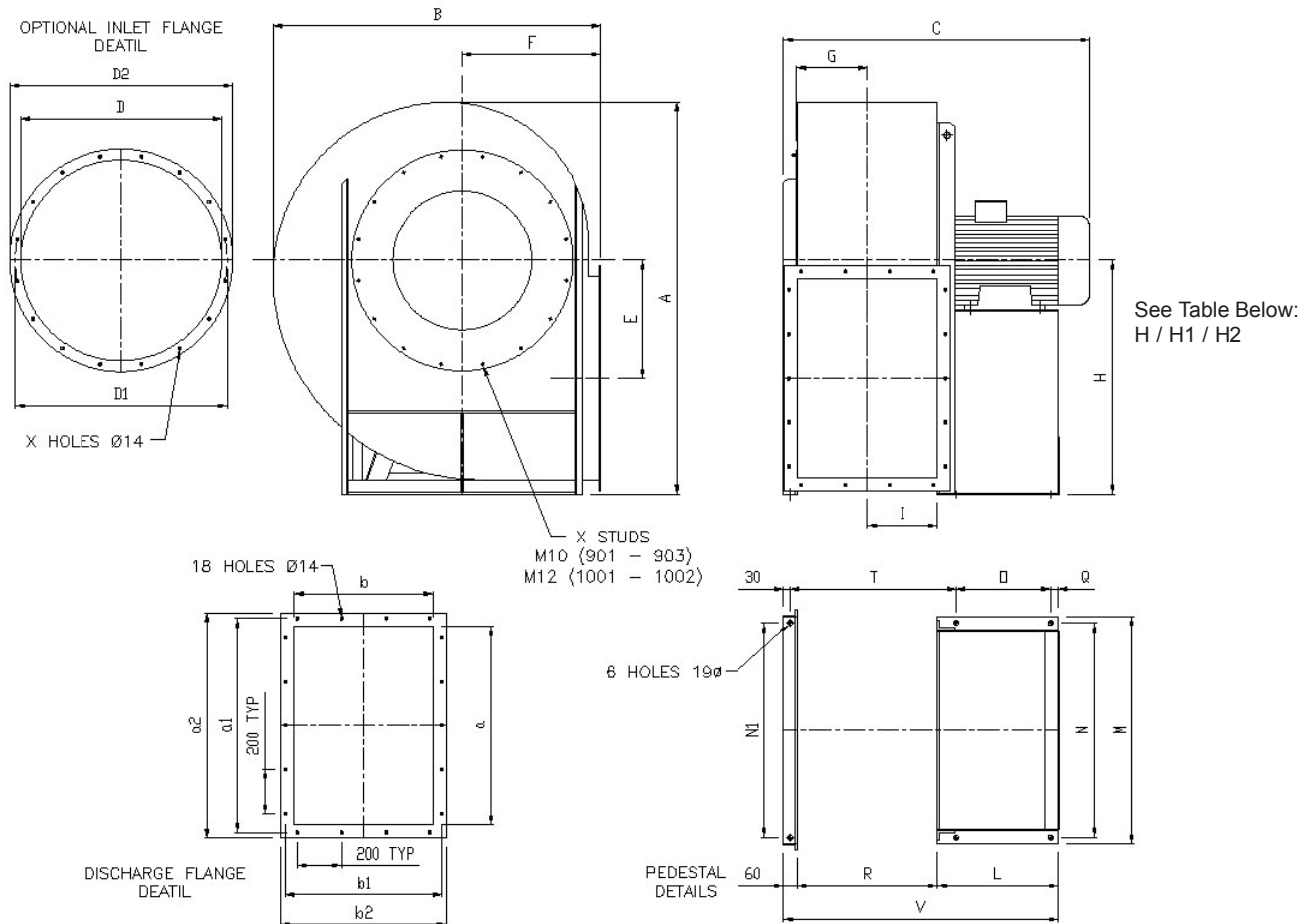
Please note:

- Maximum air temperature through fan is 80°C without cooling fan, and 150°C with cooling fan. Please consult ACI's Technical Sales Department.

EV Radial Bladed Blowers

BPR 4 Pole Series (BPR903A-1001B)

Outline drawing dimensions:



Viewed from motor side

Table of discharge angles (* Options may incur additional cost)

LG								
	L0	L45	L90	L135	L180	L225	L270	L315
RD								
	R0	R45	R90	R135	R180	R225	R270	R315

BPR Range painted RAL6011 Green as standard. [Other colours available upon request.]

All BPR Fans are revolvable.

* If AV mountings are required, a front pedestal/foot is necessary for support (details on request)

Table for blower dimensions:

Type		Fan										Base								Inlet Flange				Discharge Flange					Weight			
Fan	Motor	A	B	C	E	F	G	H	H1	H2	I	L	M	N	N1	O	Q	R	T	V	D	D1	D2	X	a	b	a1	b1	a2	b2	(Kgs)	
BPR 903/A	200 L4			1310								500				385			741	1196												640
BPR 902/B	225 S4	1780	1490	1390	535	630	322	1060	900	630	318	550	1030	970	970	425	40	636	751	1246	906	958	1006	16	900	630	968	708	1020	750	720	
BPR 901/C	225 M4			1390								550				425			751	1246											760	
BPR 1002/A	250 M4			1470								600				460	45		841	1376											990	
BPR 1001/B	280 S4	1980	1670	1600	610	710	362	1180	1000	710	360	700	1130	1060	1060	550	50	716	846	1476	1007	1067	1107	24	1000	710	1077	785	1120	830	1170	

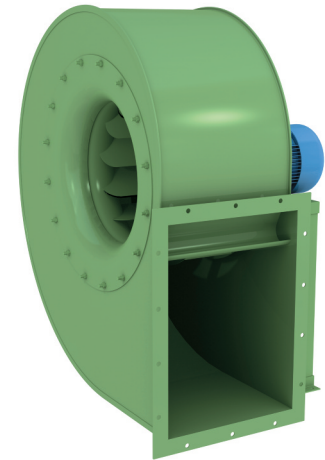
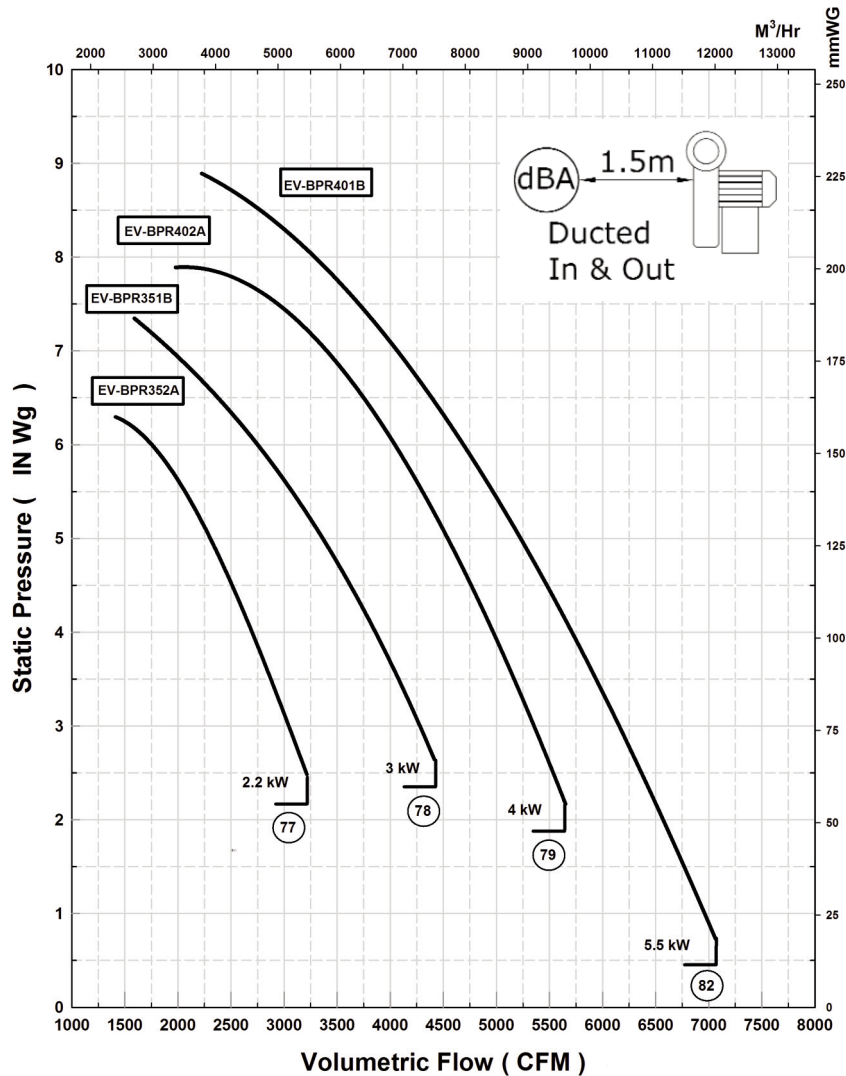
Please note (1) - all drawings measurements are in millimeters (mm)
Please note (2) - above technical specifications are subject to change

EV Radial Bladed Blowers

BPR 2 Pole Series (BPR352A-BPR401B)

Performance curves - inlet / discharge side

Curve illustrated is for 2 pole (2900 RPM)



Low-pressure centrifugal fan / High efficiency and low-noise reverse blade impeller / Directly coupled motor.

Optional Extras Include:

- Control Valves
- Inlet & Outlet Flexible Connectors
- Anti-vibration mountings

Please note:

Pascal = (In.SWG x 249)

M³/Hr = (CFM x 1.699)

Noise level tolerances +3dB(A)

Description:

Low-pressure centrifugal fan. High efficiency and low-noise reverse blade impeller. Directly coupled motor.

Use:

This series of blowers are particularly suitable for aspiration of clean and slightly dusty air.

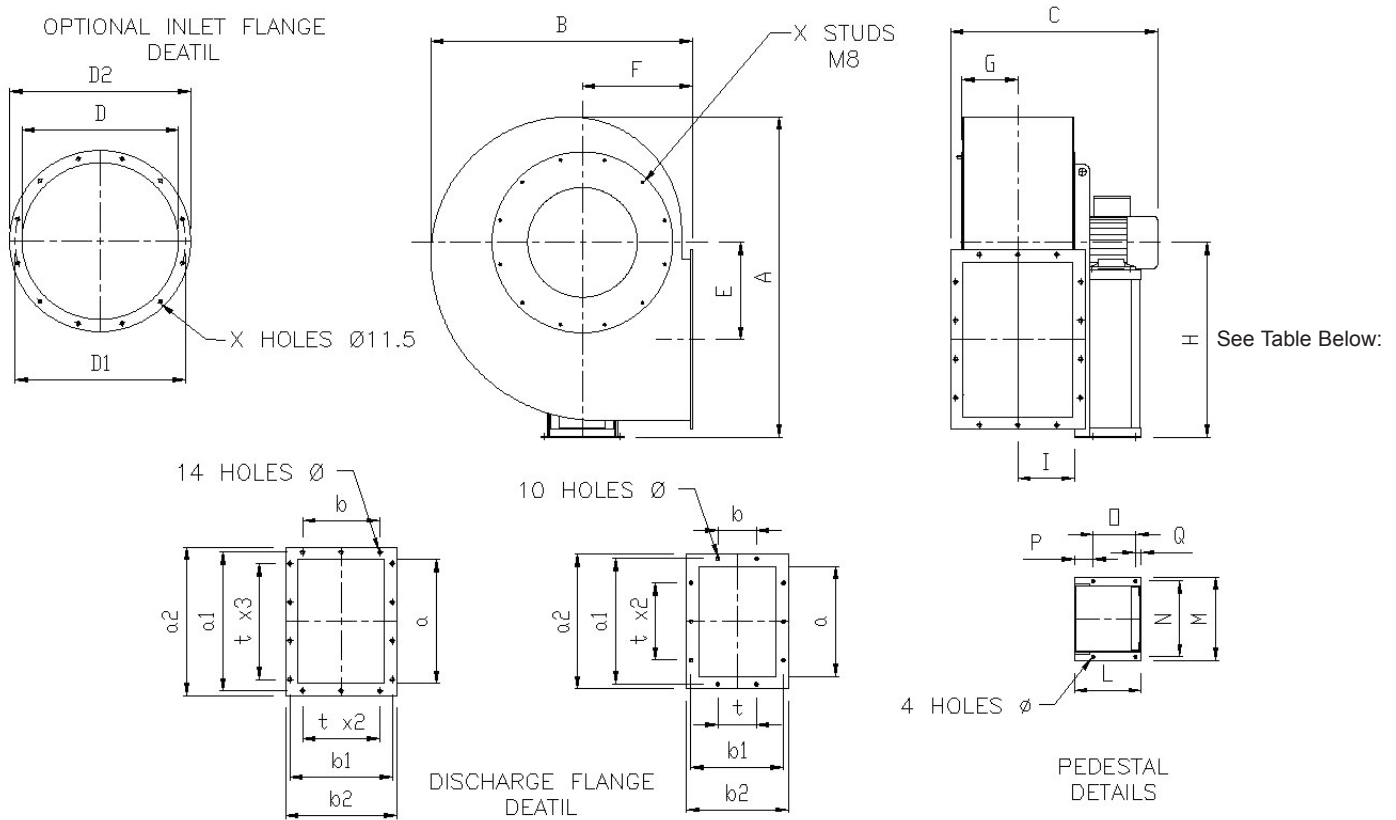
Please note:

- Maximum air temperature through fan is 80°C without cooling fan, and 150°C with cooling fan. Please consult ACI's Technical Sales Department.

EV Radial Bladed Blowers

BPR 2 Pole Series (BPR352A-BPR401B)

Outline drawing dimensions:



BPR Range painted RAL6011 Green as standard. [Other colours available upon request.]

All BPR Fans are revolvable.

* If AV mountings are required, a front pedestal/foot is necessary for support (details on request)

Viewed from motor side

Table of discharge angles (* Options may incur additional cost)

LG				*	*			
	L0	L45	L90	L135	L180	L225	L270	L315
RD				*	*			
	R0	R45	R90	R135	R180	R225	R270	R315

Table for blower dimensions:

Type		Fan										Base										Inlet Flange				Discharge Flange								Weight						
Fan	Motor	A	B	C	E	F	G	H	H1	H2	I	L	M	N	N1	O	P	Q	R	S	T	U	V	∅	D	D1	D2	N0	a	b	a1	b1	a2	b2	t	N0	∅	Kg		
BPR 352/A	90 L2	740	620	575	225	265	130	450	450	265	132	215	270	245	-	137	60	18	-	-	-	-	-	10	361	405	441	8	355	250	405	300	435	330	125	10	11,5	60		
BPR 351/B	100 LA2			640								260	332	300		200	35	25						12																70
BPR 402/A	112 M2	830	695	670	250	300	146	500	500	300	148	260	332	300	-	200	35	25	-	-	-	-	-	12	405	448	485	8	400	280	448	332	480	360	125	14	11,5	90		
BPR 401/B	132 SA2			730								320	392	360		250	45	25						12																100

Please note (1) - all drawings measurements are in millimeters (mm)
Please note (2) - above technical specifications are subject to change

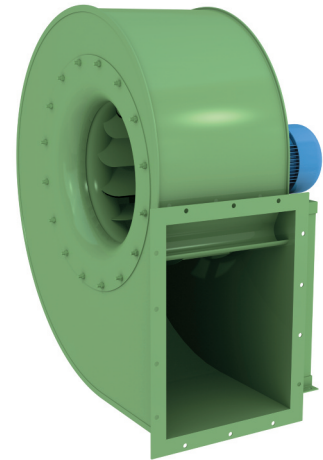
AIR CONTROL INDUSTRIES LTD
 Weycroft Avenue, Millwey Industrial Estate,
 Axminster, Devon, EX13 5HU
 t: +44(0)1297 529242 f: +44(0)1297 529241
 e: sales@aircontrolindustries.com
 w: www.aircontrolindustries.com

EV Radial Bladed Blowers

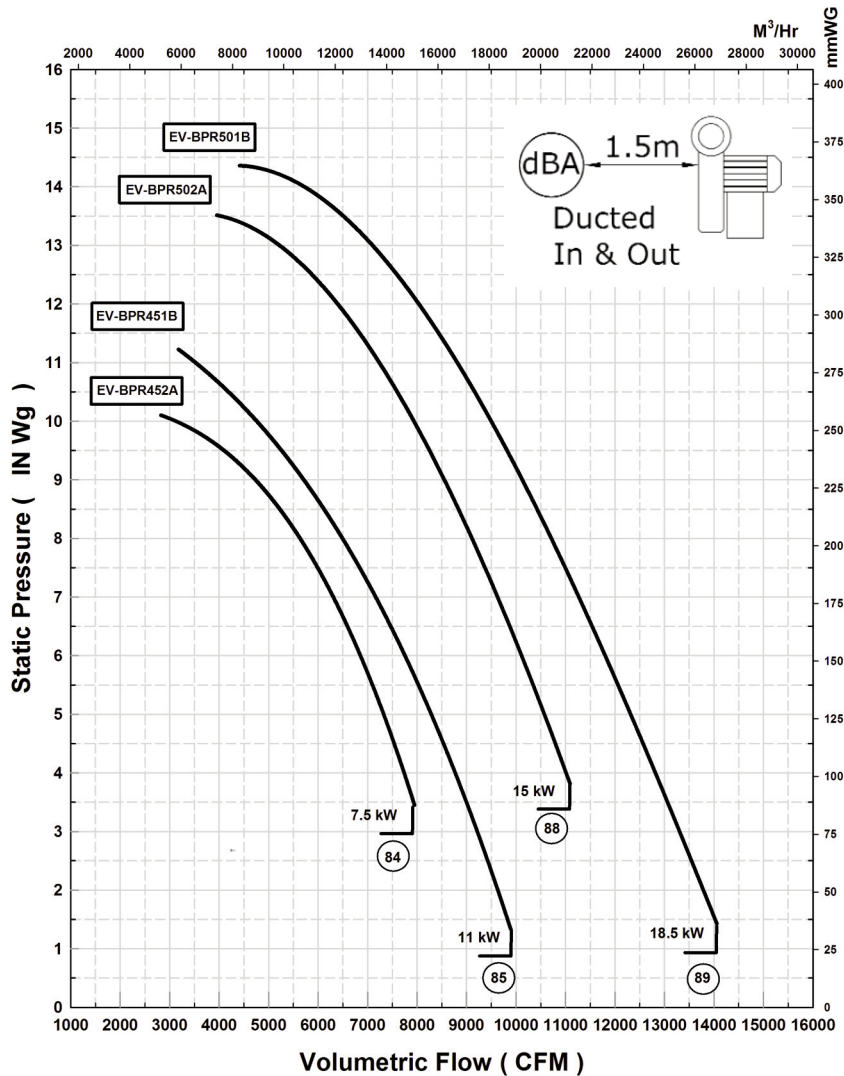
BPR 2 Pole Series (BPR452A-BPR501B)

Performance curves - inlet / discharge side

Curve illustrated is for 2 pole (2900 RPM)



Low-pressure centrifugal fan / High efficiency and low-noise reverse blade impeller / Directly coupled motor.



Optional Extras Include:

- Control Valves
- Inlet & Outlet Flexible Connectors
- Anti-vibration mountings

Please note:

Pascal = (In.SWG x 249)

M³/Hr = (CFM x 1.699)

Noise level tolerances +3dB(A)

Description:

Low-pressure centrifugal fan. High efficiency and low-noise reverse blade impeller. Directly coupled motor.

Use:

This series of blowers are particularly suitable for aspiration of clean and slightly dusty air.

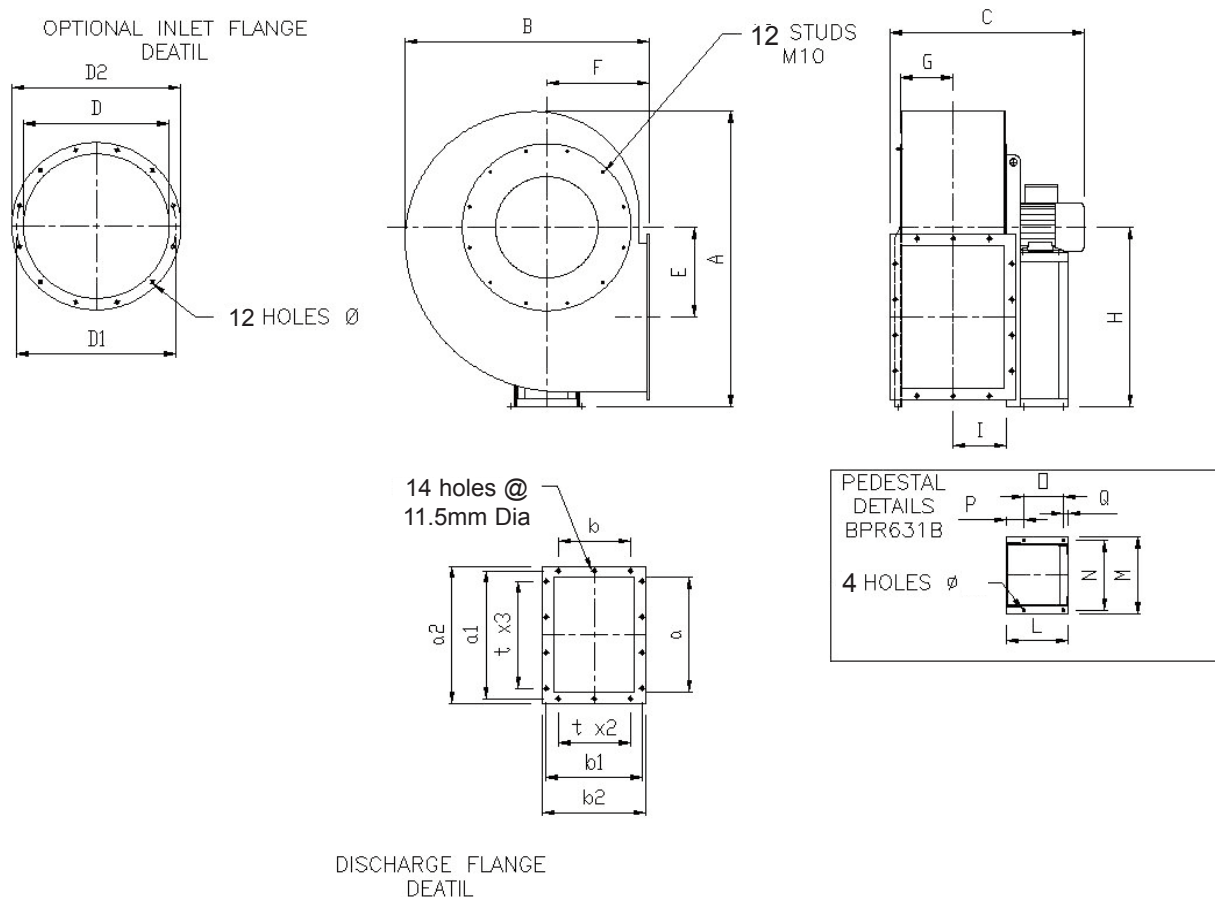
Please note:

- Maximum air temperature through fan is 80°C without cooling fan, and 150°C with cooling fan. Please consult ACI's Technical Sales Department.

EV Radial Bladed Blowers

BPR 2 Pole Series (BPR452A-BPR501B)

Outline drawing dimensions:



Viewed from motor side

Table of discharge angles (* Options may incur additional cost)

LG								
	L0	L45	L90	* L135	* L180	L225	L270	L315
RD								
	R0	R45	R90	* R135	* R180	R225	R270	R315

BPR Range painted RAL6011 Green as standard. [Other colours available upon request.]

All BPR Fans are revolvable.

* If AV mountings are required, a front pedestal/foot is necessary for support (details on request)

Table for blower dimensions:

Type		Fan										Base										Inlet Flange					Discharge Flange							Weight			
Fan	Motor	A	B	C	E	F	G	H	H1	H2	I	L	M	N	N1	O	P	Q	R	S	T	U	V	Ø	D	D1	D2	N0	Ø	a	b	a1	b1	a2	b2	t	Kg
BPR 452/A	132 SB2	930	780	765 905	280	335	164	560	560	335	166	320	392	360	-	250	45	25	-	-	-	-	-	12	455	497	535	12	11,5	450	315	497	366	530	395	125	120
BPR 451/B	160 MR2																																				
BPR 502/A	160 M2	1040	850	945 945	315	355	184	630	630	355	186	425	440	400	-	340	55	30	-	-	-	-	-	14	506	551	586	12	11,5	500	355	551	405	580	435	125	190
BPR 501/B	160 L2																																				

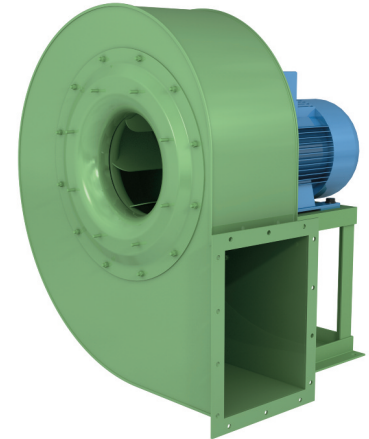
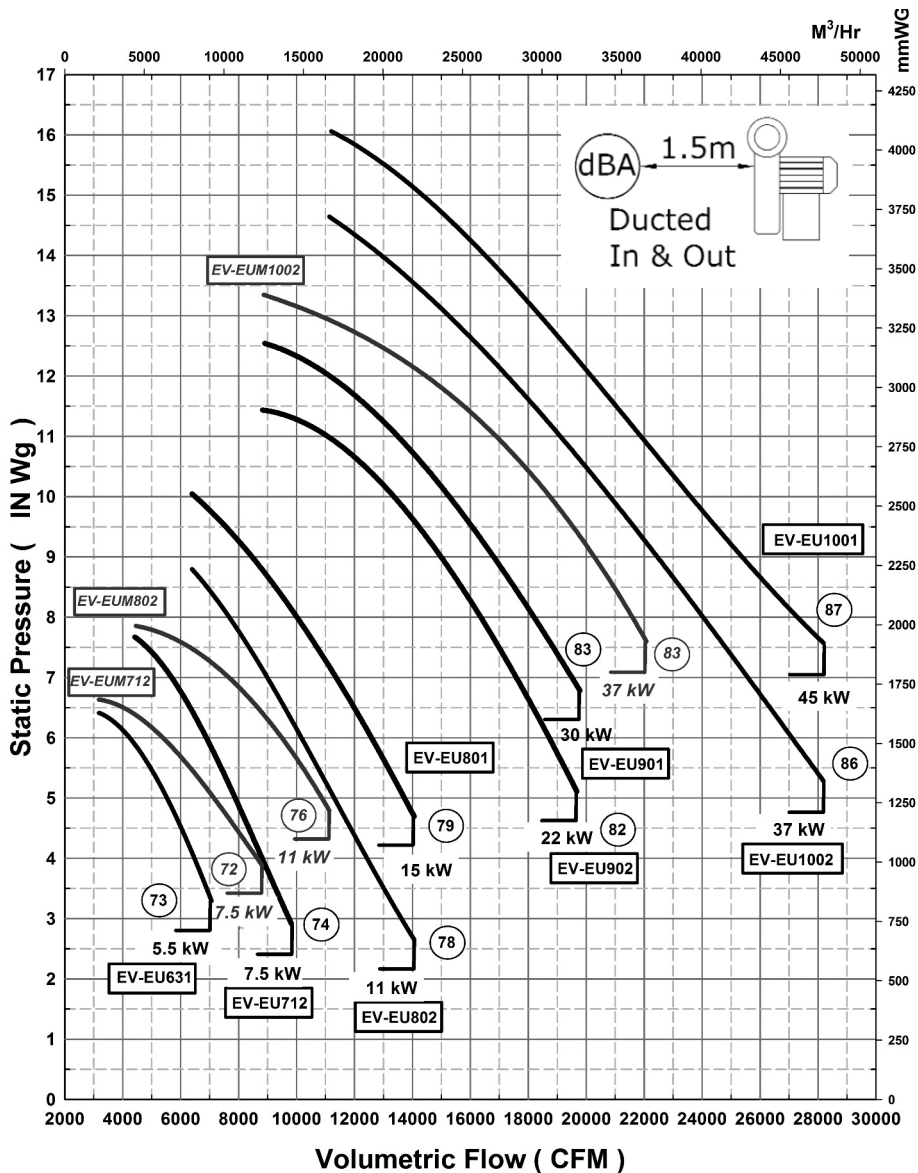
Please note (1) - all drawings measurements are in millimeters (mm)
Please note (2) - above technical specifications are subject to change

AIR CONTROL INDUSTRIES LTD
 Weycroft Avenue, Millwey Industrial Estate,
 Axminster, Devon, EX13 5HU
 t: +44(0)1297 529242 f: +44(0)1297 529241
 e: sales@aircontrolindustries.com
 w: www.aircontrolindustries.com

EV Radial Bladed Blowers

EU/EUM 4 Pole Series (EU631-EU1001)

Performance curves - inlet & discharge side
Curve illustrated is for 4 pole (1450 RPM)



Low-pressure centrifugal fan / High efficiency and low-noise reverse blade impeller / Directly coupled motor.

Optional Extras Include:

- Control Valves
- Inlet Guards
- Inlet & Outlet Flexible Connectors
- Anti-vibration mountings

Please note:

Pascal = (In.SWG x 249)
M³/Hr = (CFM x 1.699)

Noise level tolerances +3dB(A)

Description:

Low and medium pressure centrifugal fans. High efficiency and low noise backward curved impeller. Directly coupled motor.

Use:

This series of blowers are particularly suitable for aspiration of extremely dusty air.

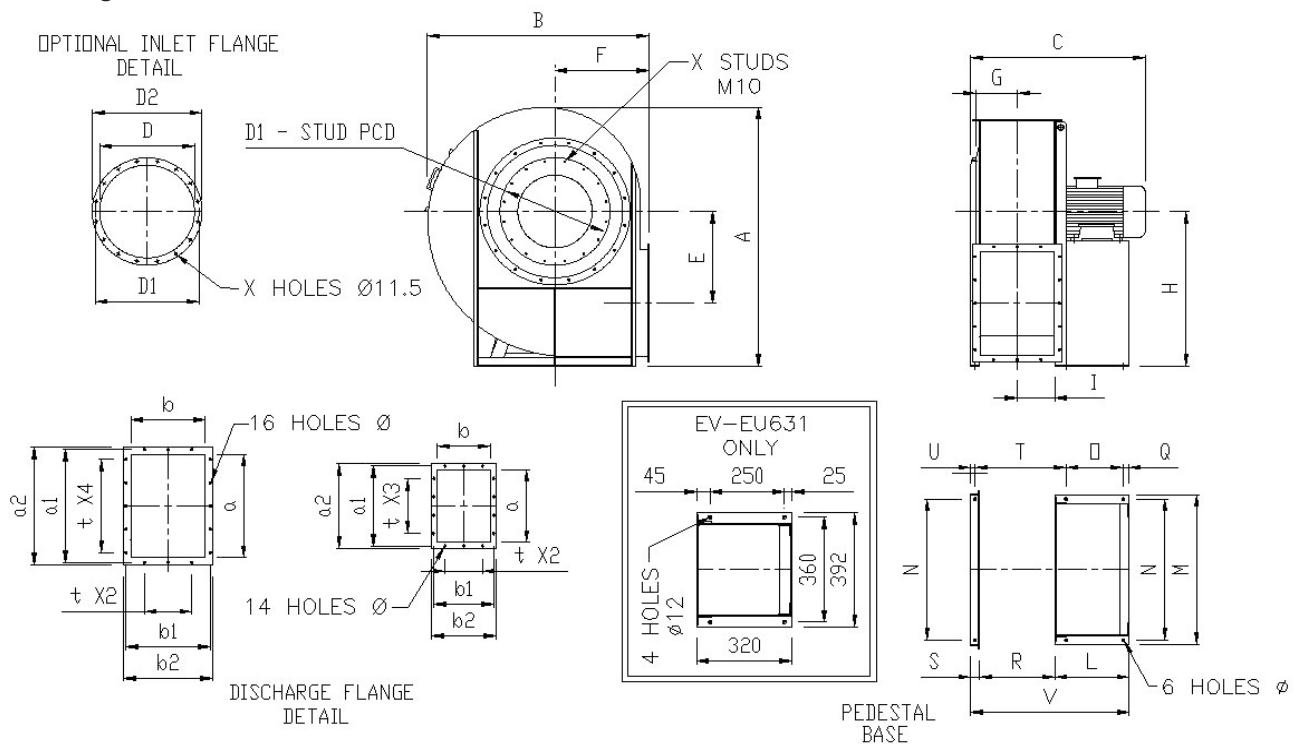
Please note:

- Maximum air temperature through fan is 80°C
- Higher temperatures can be achieved with a heat spinner arrangement. Please consult ACI's Technical Sales Department.

EV Radial Bladed Blowers

EU/EUM 4 Pole Series (EU631-EU1001)

Outline drawing dimensions:



EU/EUM Range painted RAL6011 Green as standard. [Other colours available upon request.]

All EU/EUM fans are fixed and cannot be rotated except for EU631.

If A/V Mountings are required, a front inlet pedestal is necessary for support.

Table of discharge angles (* options may incur additional cost)

LG								
	L0	L45	L90	L135	L180	L225	L270	L315
RD								
	R0	R45	R90	R135	R180	R225	R270	R315

Table for blower dimensions:

Fan		Base										Inlet Flange				Discharge Flange						Weight															
Fan	Motor	A	B	C	E	F	G	H	H ₁	H ₂	I	L	M	N ₁ /N	O	P	Q	R	S	T	U	V	Ø	D	D ₁	D ₂	X	a	b	a ₁	b ₁	a ₂	b ₂	t	N°	Ø	Kg
EU 631	132 SA4	131 5	109 0	805	465	450	201	800	630	450	182	320	392	360	250	45	25	-	-	-	-	-	12	456	49 7	536	12	500	355	55 1	405	580	435	12 5	14	11,5	250
EU 712	132 MA4	149 0	123 0	860	525	500	225	900	710	500	205	320	850	800	250	-	25	405	50	475	25	775	17	506	55 1	586	12	560	400	62 9	464	660	500	16 0	14	14	350
EUM 712	132 MA4	148 5	123 0	860	525	500	210	900	710	500	203	320	850	800	250	-	25	405	50	475	25	775	17	566	62 9	666	16	560	400	62 9	464	660	500	16 0	14	14	348
EU 802	160 M4	165 0	136 5	105 5	585	560	250	1000	800	560	228	425	930	870	340	-	30	455	60	540	30	940	17	568	62 9	668	16	630	450	69 8	513	730	550	16 0	14	14	450
EUM 802	160 M4	165 0	136 5	105 5	585	560	236	1000	800	560	230	425	930	870	340	-	30	455	60	540	30	940	17	636	69 8	736	16	630	450	69 8	513	730	550	16 0	14	14	446
EU 801	160 L4	165 0	136 5	105 5	585	560	250	1000	800	560	228	425	930	870	340	-	30	455	60	540	30	940	17	568	62 9	668	16	630	450	69 8	513	730	550	16 0	14	14	480
EU 902	180 L4	177 0	151 0	1180	630	630	280	1060	900	630	253	470	1030	970	370	-	35	506	60	601	30	1036	19	638	69 8	738	16	710	500	77 5	567	810	600	16 0	16	14	603
EU 901	200 L4	177 0	151 0	1180	630	630	280	1060	900	630	253	500	1030	970	385	-	40	506	60	611	30	1066	19	638	69 8	738	16	710	500	77 5	567	810	600	16 0	16	14	660
EU 1002	225 S4	198 0	170 0	131 5	710	710	315	1180	100 0	710	284	550	1130	106 0	425	-	40	568	60	683	30	1178	21	718	77 5	818	16	800	560	87 1	639	920	680	20 0	14	14	870
EUM 1002	225 S4	198 0	170 0	131 5	710	710	290	1180	100 0	710	285	550	1130	106 0	425	-	40	568	60	683	30	1178	21	806	86 1	906	16	800	560	87 1	639	920	680	20 0	14	14	865
EU 1001	225 M4	198 0	170 0	131 5	710	710	315	1180	100 0	710	284	550	1130	106 0	425	-	40	568	60	683	30	1178	21	718	77 5	818	16	800	560	87 1	639	920	680	20 0	14	14	900

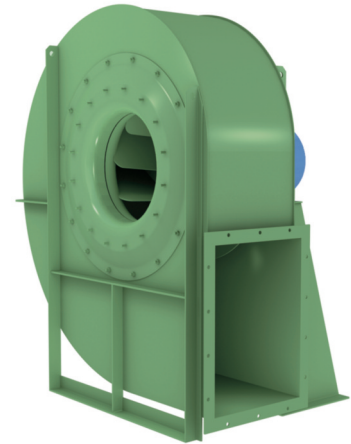
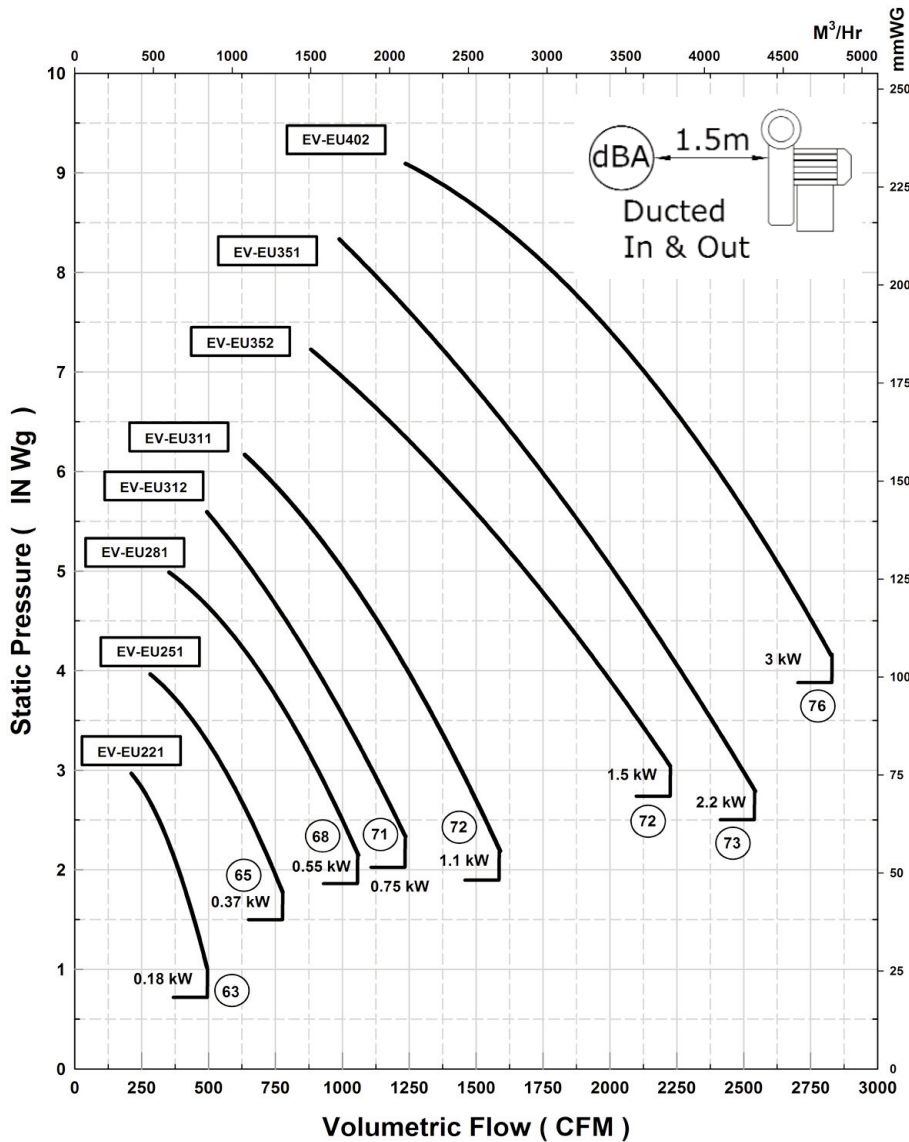
Please note (1) - all drawings measurements are in millimeters (mm)
Please note (2) - above technical specifications are subject to change

AIR CONTROL INDUSTRIES LTD
Weycroft Avenue, Millwey Industrial Estate,
Axminster, Devon, EX13 5HU
t: +44(0)1297 529242 f: +44(0)1297 529241
e: sales@aircontrolindustries.com
w: www.aircontrolindustries.com

EV Radial Bladed Blowers

EU 2 Pole Series (EU401-EU561)

Performance curves - inlet & discharge side
Curve illustrated is for 2 pole (2850 RPM)



Fan unit fitted with inlet support pedestal

Optional Extras Include:

- Control Valves
- Inlet Guards
- Inlet & Outlet Flexible Connectors
- Anti-vibration mountings
- Acoustic Enclosures

Please note:

Pascal = (In.SWG x 249)
M³/Hr = (CFM x 1.699)

Noise level tolerances +3dB(A)

Description:

Low and medium pressure centrifugal fans. High efficiency and low noise backward curved impeller. Directly coupled motor.

Use:

This series of blowers are particularly suitable for aspiration of extremely dusty air.

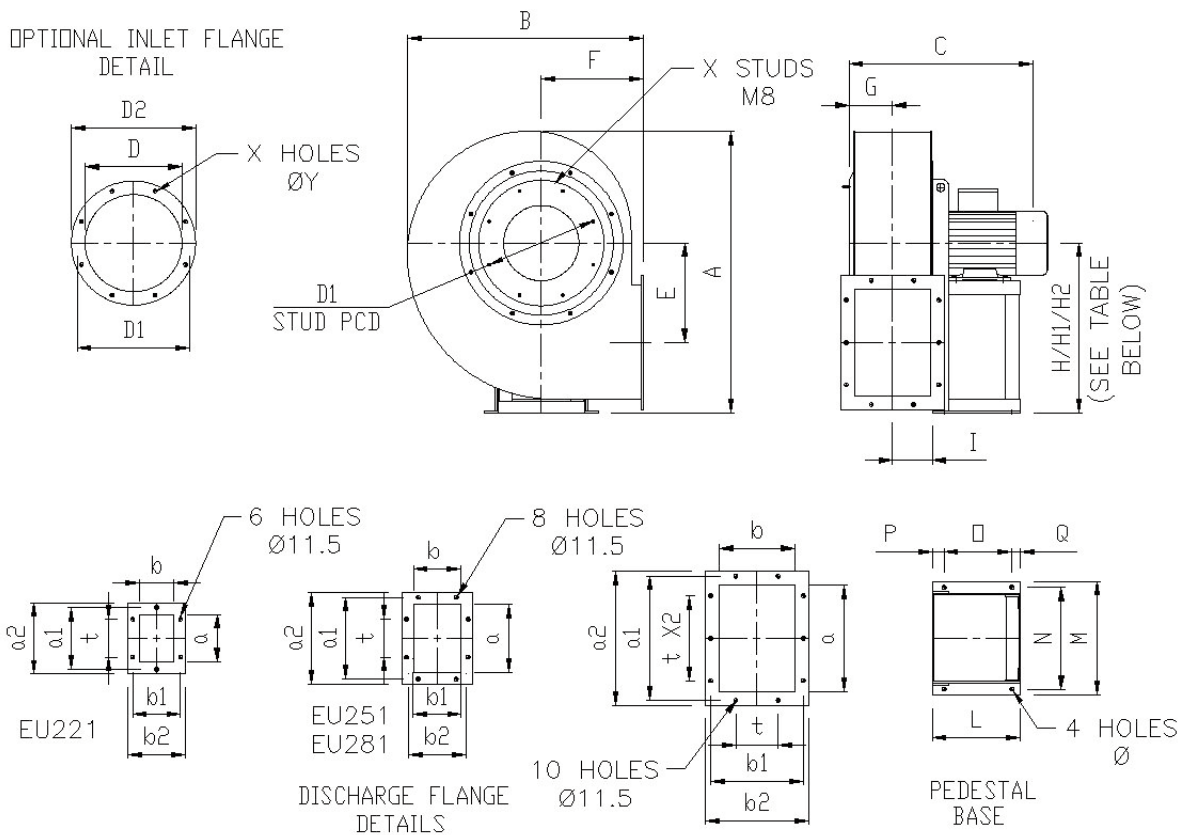
Please note:

- Maximum air temperature through fan is 80°C
- Higher temperatures can be achieved with a heat spinner arrangement. Please consult ACI's Technical Sales Department.

EV Radial Bladed Blowers

EU 2 Pole Series (EU401-EU561)

Outline drawing dimensions:



EU Range painted RAL6011 Green as standard. [Other colours available upon request.]

All EU Fans are revolvable.

Table of discharge angles:

LG								
	L0	L45	L90	L135	L180	L225	L270	L315
RD								
	R0	R45	R90	R135	R180	R225	R270	R315

Table for blower dimensions:

Fan		Base										Inlet Flange					Discharge Flange						Weight	Inlet Guards									
Fan	Motor	A	B	C	E	F	G	H	H ₁	H ₂	I	L	M	N	O	P	Q	Ø	D	D ₁	D ₂	X	Y	a	b	a ₁	b ₁	a ₂	b ₂	t	N°	Kg	Pt. No.
EU 221	63 A2	425	355	330	130	160	63	250	250	160	56	150	196	175	85	50	15	10	129	165	189	4	9,5	140	100	182	141	210	170	112	6	25	EV-RP160
EU 251	71 A2	530	450	370	170	200	80	315	315	200	76	190	235	215	125	50	15	10	185	219	255	8	11,5	200	140	241	182	270	210	112	8	30	EV-RP200
EU 281	71 B2	590	495	400	202	212	90	355	355	212	86	190	235	215	125	50	15	10	205	241	27	8	11,5	224	160	265	200	294	230	112	8	45	
EU 312	80 A2	665	550	450	228	236	100	400	400	236	96	190	235	215	125	50	15	10	229	265	299	8	11,5	250	180	292	219	320	250	112	10	60	
EU 311	80 B2	665	550	450	228	236	100	400	400	236	96	190	235	215	125	50	15	10	229	265	299	8	11,5	250	180	292	219	320	250	112	10	65	
EU 352	90 S2	745	620	515	263	265	112	450	450	265	106	215	270	245	137	60	18	10	255	292	325	8	11,5	280	200	332	249	360	280	125	10	85	
EU 351	90 L2	745	620	515	263	265	112	450	450	265	106	215	270	245	137	60	18	10	255	292	325	8	11,5	280	200	332	249	360	280	125	10	90	
EU 402	100 LA2	830	695	610	292	300	125	500	500	300	120	260	332	300	200	35	25	12	286	332	366	8	11,5	315	224	366	373	395	304	125	10	120	EV-RP280

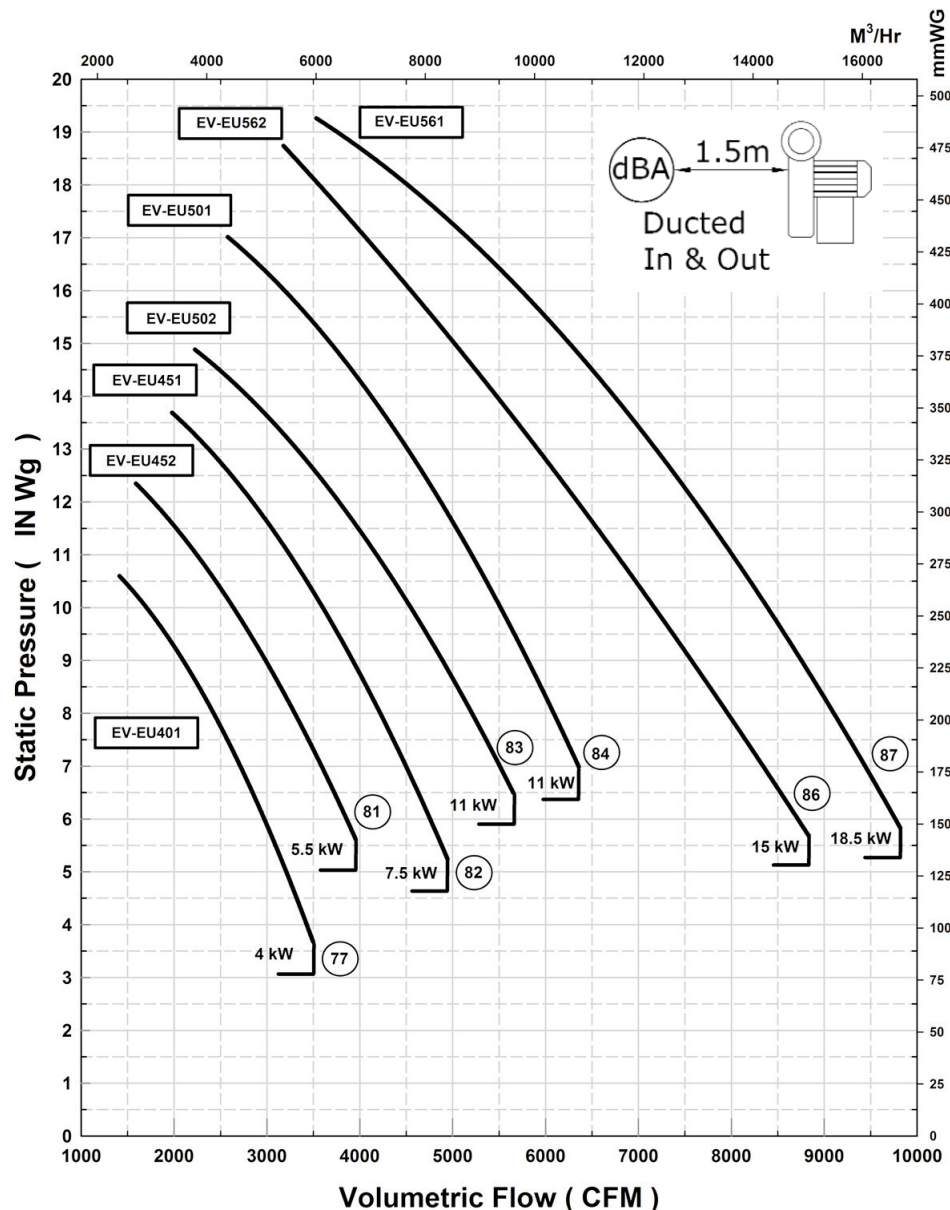
Please note (1) - all drawings measurements are in millimeters (mm)
Please note (2) - above technical specifications are subject to change

AIR CONTROL INDUSTRIES LTD
Weycroft Avenue, Millwey Industrial Estate,
Axminster, Devon, EX13 5HU
t: +44(0)1297 529242 f: +44(0)1297 529241
e: sales@aircontrolindustries.com
w: www.aircontrolindustries.com

EV Radial Bladed Blowers

EU 2 Pole Series (EU221-EU402)

Performance curves - inlet & discharge side
Curve illustrated is for 2 pole (2850 RPM)



Fan unit fitted with inlet support pedestal

Optional Extras Include:

- Control Valves
- Inlet Guards
- Inlet & Outlet Flexible Connectors
- Anti-vibration mountings
- Acoustic Enclosures

Please note:

Pascal = (In.SWG x 249)
M³/Hr = (CFM x 1.699)

Noise level tolerances +3dB(A)

Description:

Low and medium pressure centrifugal fans. High efficiency and low noise backward curved impeller. Directly coupled motor.

Use:

This series of blowers are particularly suitable for aspiration of extremely dusty air.

Please note:

- Maximum air temperature through fan is 80°C
- Higher temperatures can be achieved with a heat spinner arrangement. Please consult ACI's Technical Sales Department.

EV Radial Bladed Blowers

EU 2 Pole Series (EU221-EU402)

Outline drawing dimensions:

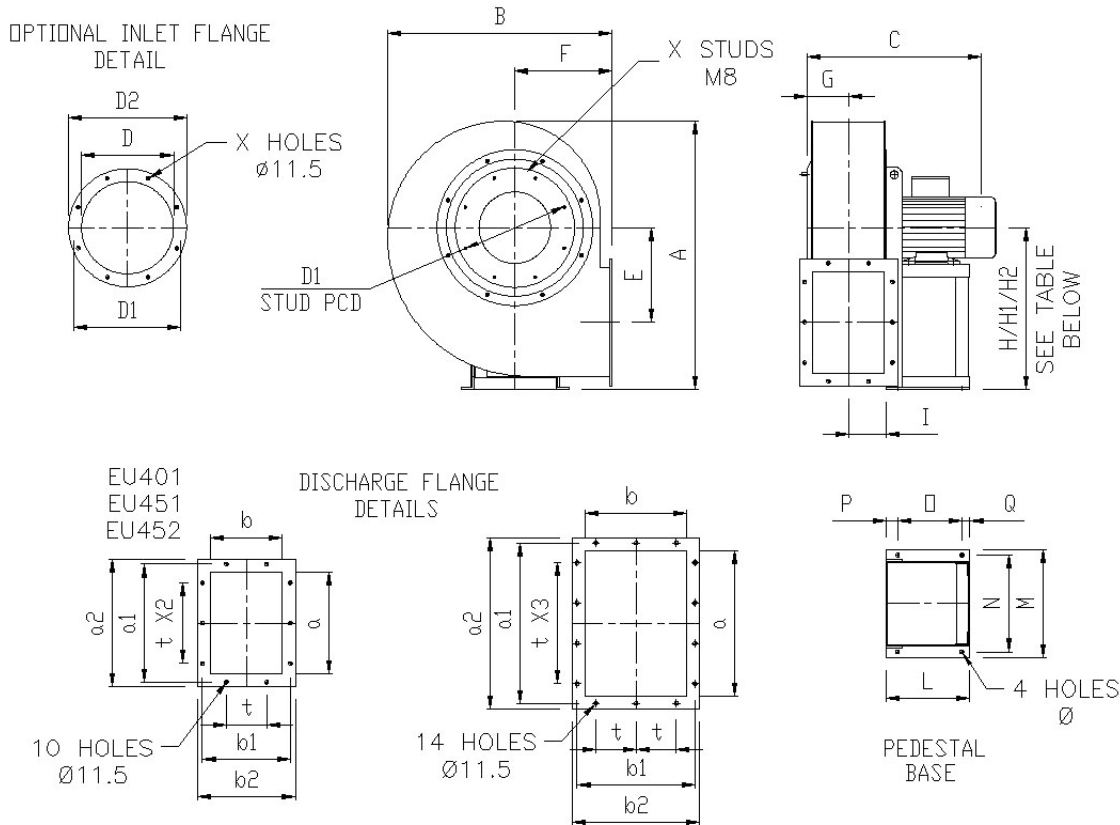





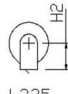
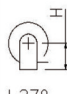







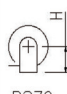
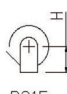


Table of discharge angles:

LG								
	L0	L45	L90	L135	L180	L225	L270	L315
RD								
	R0	R45	R90	R135	R180	R225	R270	R315

EU Range painted RAL6011 Green as standard. [Other colours available upon request.]

All EU Fans are revolvable.

* If AV mountings are required, a front pedestal/foot is necessary for support (details on request)

Table for blower dimensions:

Fan		Base										Inlet Flange				Discharge Flange								Weight	Inlet Guards							
Fan	Motor	A	B	C	E	F	G	H	H ₁	H ₂	I	L	M	N	O	P	Q	Ø	D	D ₁	D ₂	X	a	b	a ₁	b ₁	a ₂	b ₂	t	N°	Kg	Pt. No.
EU 401	112 M2	830	695	610	292	300	125	500	500	300	120	260	332	300	200	35	25	12	286	332	366	8	315	224	366	273	395	304	125	10	130	EV-RP280
EU 452	132 SA2	930	780	700	328	335	145	560	560	335	132	320	392	360	250	45	25	12	321	366	401	8	355	250	405	300	435	330	125	10	185	
EU 451	132 SB2	930	780	700	328	335	145	560	560	335	132	320	392	360	250	45	25	12	321	366	401	8	355	250	405	300	435	330	125	10	210	
* EU 502	132 MB2	1040	850	730	365	355	160	630	630	355	148	320	392	360	250	45	25	12	361	405	441	8	400	280	448	332	480	360	125	10	280	EV-RP355
* EU 501	160 MR2	1040	850	865	365	355	160	630	630	355	148	425	440	400	340	55	30	14	261	405	441	8	400	280	448	332	480	360	125	14	320	
* EU 562	160 M2	1170	955	900	410	400	180	710	560	400	165	425	440	400	340	55	30	14	406	448	486	12	450	315	497	366	530	395	125	14	290	EV-RP450
* EU 561	160 L2	1170	955	900	410	400	180	710	560	400	165	425	440	400	340	55	30	14	406	448	486	12	450	315	497	366	530	395	125	14	420	

Please note (1) - all drawings measurements are in millimeters (mm)
 Please note (2) - above technical specifications are subject to change

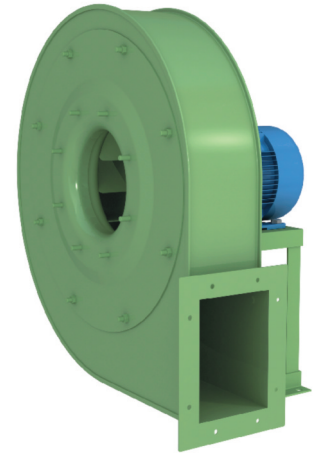
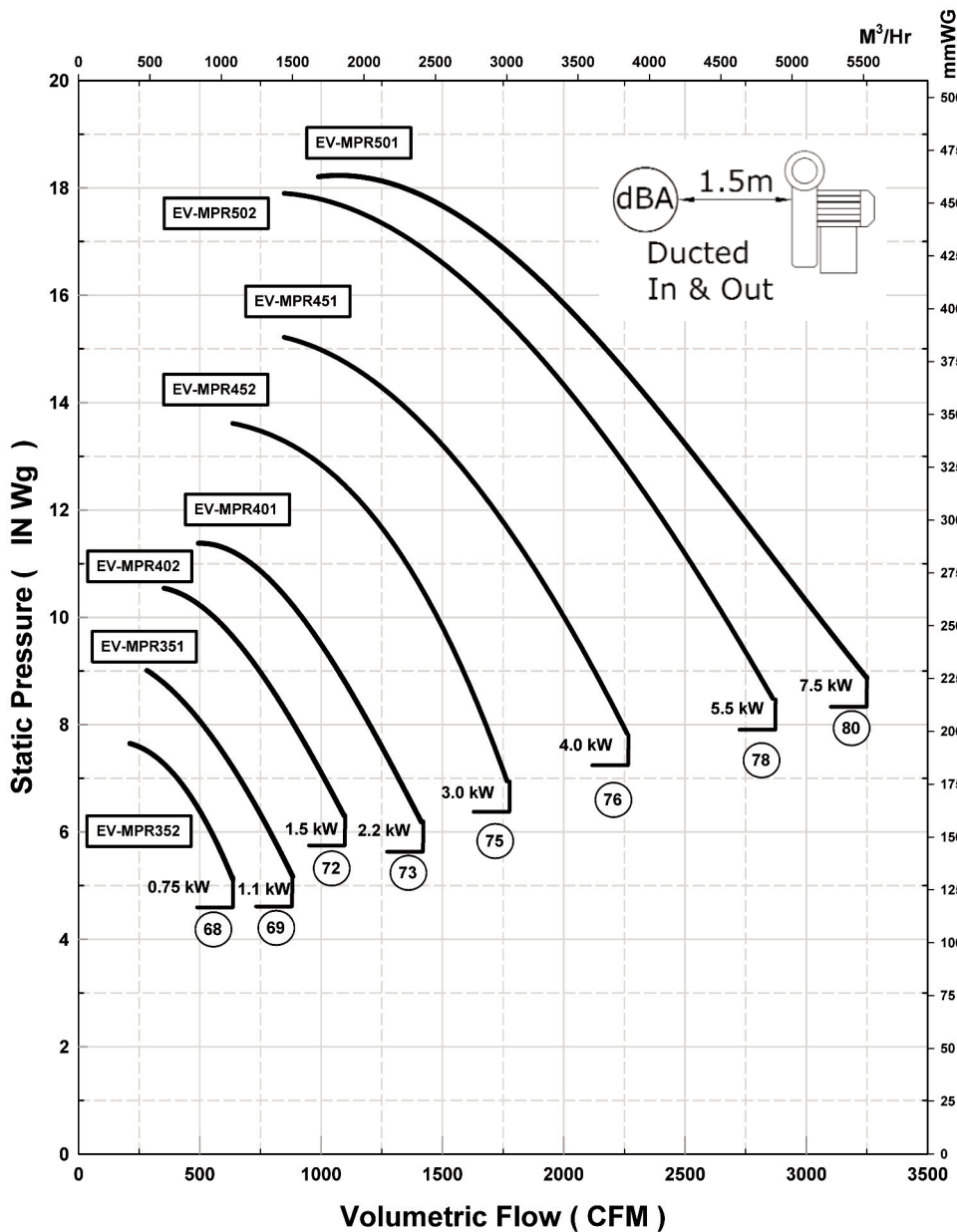
AIR CONTROL INDUSTRIES LTD
 Weycroft Avenue, Millwey Industrial Estate,
 Axminster, Devon, EX13 5HU
 t: +44(0)1297 529242 f: +44(0)1297 529241
 e: sales@aircontrolindustries.com
 w: www.aircontrolindustries.com

EV Radial Bladed Blowers

MPR 2 Pole Series (MPR352-MPR501)

Performance curves - inlet & discharge side

Curve illustrated is for 2 pole (2900 RPM)



Optional Extras Include:

- Control Valves
- Inlet Guards
- Inlet & Outlet Flexible Connectors
- Anti-vibration mountings

Please note:

Pascal = (In.SWG x 249)
M³/Hr = (CFM x 1.699)

Noise level tolerances +3dB(A)

Description:

Low and medium pressure centrifugal fan. High efficiency and low noise reverse-blade impeller. Directly coupled motor.

Use:

This series of blowers are particularly suitable for aspiration of extremely dusty air that may even contain granulated materials.

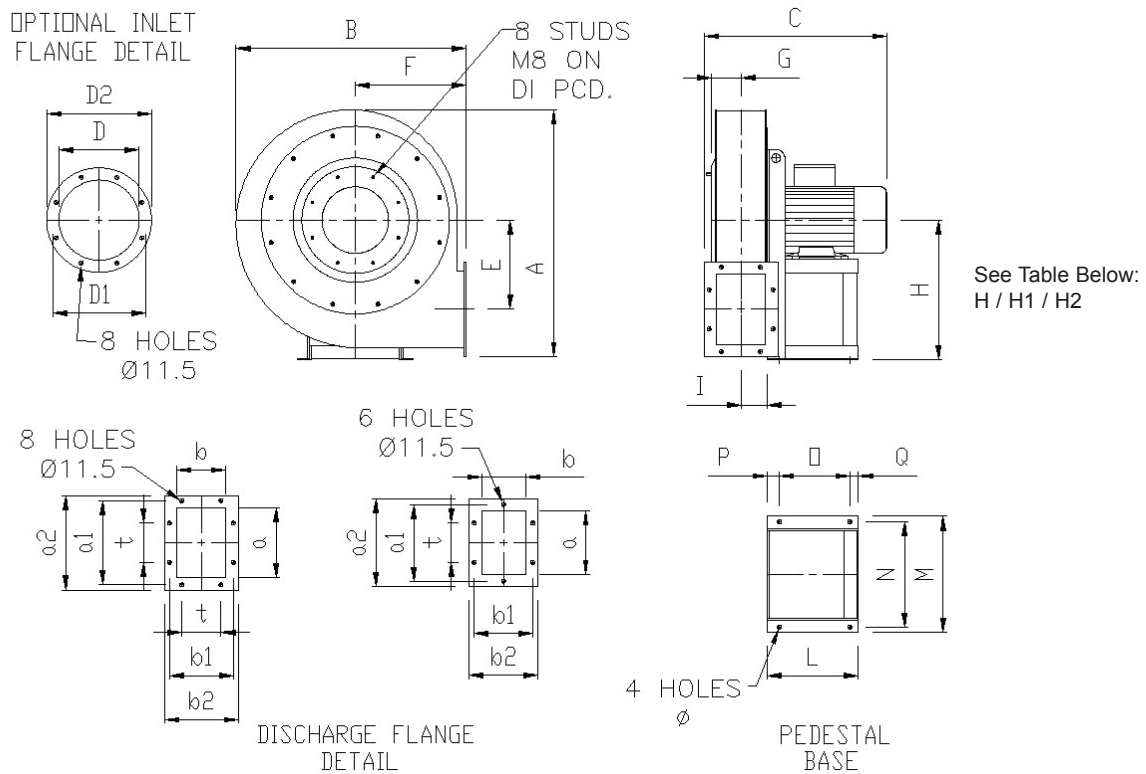
Please note:

- Maximum air temperature through fan is 80°C.
- Higher temperatures can be achieved with a heat spinner arrangement. Please consult ACI's Technical Sales Department.

EV Radial Bladed Blowers

MPR 2 Pole Series (MPR352-MPR501)

Outline drawing dimensions:



See Table Below:
H / H1 / H2

MPR Range painted RAL6011 Green as standard. [Other colours available upon request.]

All MPR Fans are revolvable.

Table of discharge angles (* Options may incur additional cost)

LG				*	*			
	L0	L45	L90	L135	L180	L225	L270	L315
RD				*	*			
	R0	R45	R90	R135	R180	R225	R270	R315

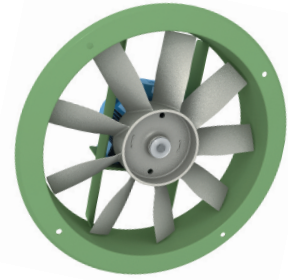
Table for blower dimensions:

Type		Fan										Base							Inlet Flange			Discharge Flange						Weight	Inlet Guard		
Fan	Motor	A	B	C	E	F	G	H	H ₁	H ₂	I	L	M	N	O	P	Q	Ø	D	D ₁	D ₂	a	b	a ₁	b ₁	a ₂	b ₂	t	N°	Kg	Pt No.
MPR 352	80 A2	590	530	385	200	250	70	335	335	250	60	190	235	215	125	50	15	10	185	219	255	160	112	200	153	230	182	112	6	35	EVP-003
MPR 351	80 B2	590	530	385	200	250	70	335	335	250	60	190	235	215	125	50	15	10	185	219	255	160	112	200	153	230	182	112	6	36	
MPR 402	90 S2	660	590	435	235	280	75	375	375	280	68	215	270	245	137	60	18	10	205	241	275	180	125	219	167	250	195	112	6	40	EVP-RP200
MPR 401	90 L2	660	590	435	235	315	75	375	375	280	68	215	270	245	137	60	18	10	205	241	275	180	125	219	167	250	195	112	6	44	
MPR 452	100 LA2	715	655	520	255	315	85	400	400	315	75	260	332	300	200	35	25	12	229	265	299	200	140	241	182	270	210	112	8	72	EVP-012
MPR 451	112 M2	715	655	520	255	315	85	400	400	315	75	260	332	300	200	35	25	12	229	265	299	200	140	241	182	270	210	112	8	77	
MPR 502	132 SA2	800	740	615	290	355	100	450	450	355	85	320	392	360	250	45	25	12	255	292	325	224	160	265	200	294	230	112	8	100	EVP-RP250
MPR 501	132 SB2	800	740	615	290	355	100	450	450	355	85	320	392	360	250	45	25	12	255	292	325	224	160	265	200	294	230	112	8	105	

Please note (1) - all drawings measurements are in millimeters (mm)
Please note (2) - above technical specifications are subject to change

EV Radial Bladed Blowers

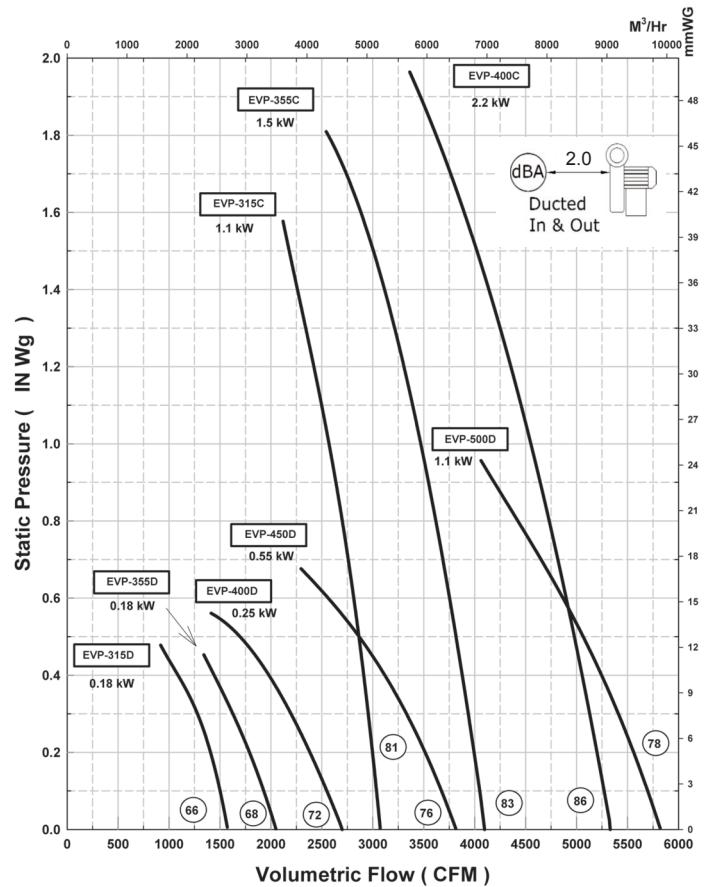
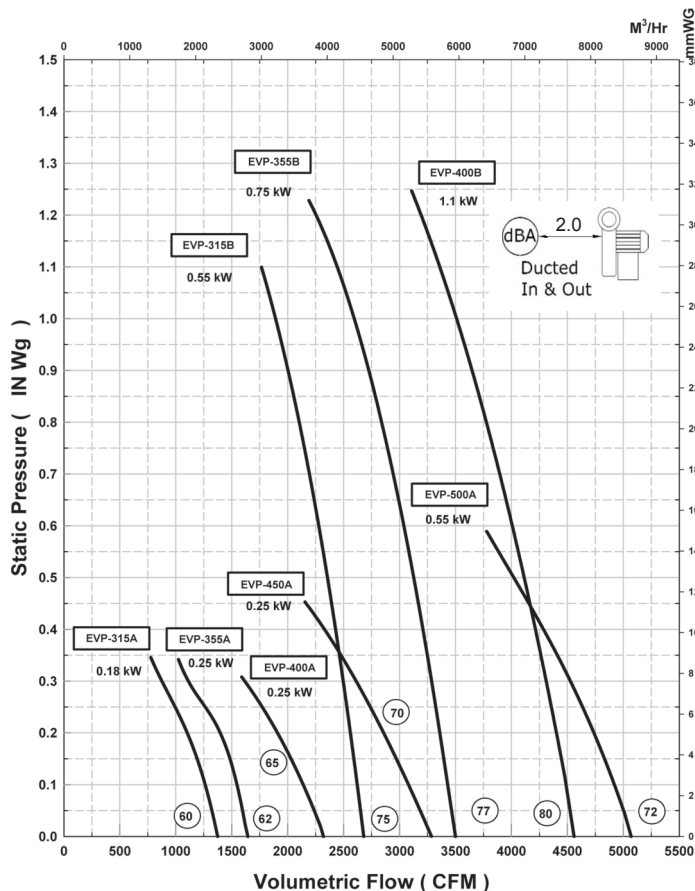
EVP Series (EVP315A-EV500D)



Performance curves - discharge side
Curve illustrated is for 2 & 4 pole

50Hz Operation

60Hz Operation



Please note:

Pascal = (In.SWG x 249)

M³/Hr = (CFM x 1.699)

Noise level tolerances +3dB(A)

Description:

Axial-flow fan with directly coupled motor, cast aluminium impeller and painted mild steel housing. Belt driven versions also available upon request.

Use:

This series of blowers are particularly suitable for sucking in smoke, as well as vitiated, dusty and wet air in foundries, cement factories, paper factories and joinery works. Generally where it is necessary to transport big volumes of air with low pressures.

Please note:

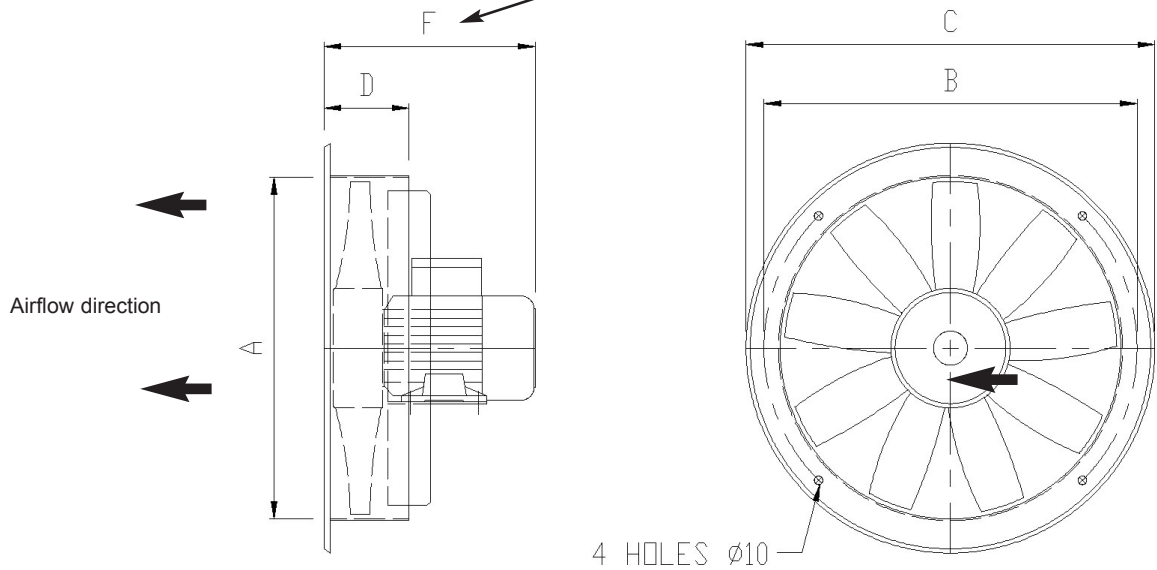
- Minimum working air temperature through fan is -20°C. Maximum temperature +40°C
- Please consult ACI's Technical Sales Department for further information

EV Radial Bladed Blowers

EVP Series (EVP315A-EVP500D)

Outline drawing dimensions:

Note - Fan length will vary depending on motor supplied



EVP Range painted RAL6011 Green as standard. [Other colours available upon request.]

Table for blower dimensions:

2 Pole:

Fan	kW	Motor	A	B	C	D	F	Weight
EV-EVP 315/B	0.55	71 B2	315	356	395	100	248	11
EV-EVP 355/B	0.75	80 A2	355	395	435	100	280	11.5
EV-EVP 400/B	1.1	80 B2	400	438	480	100	285	17
EV-EVP 315/C	1.1	80 A2	315	356	395	100	285	12.5
EV-EVP 355/C	1.3	90 B2	355	395	435	100	280	11.5
EV-EVP 400/C	2.2	90 S2	400	438	480	100	332	19

4 Pole:

Fan	kW	Motor	A	B	C	D	F	Weight
EV-EVP 315/A	0.18	63 A4	315	356	395	100	248	7
EV-EVP 355/A	0.18	63 A4	355	395	435	100	280	7.5
EV-EVP 400/A	0.18	71 B4	400	438	480	100	285	11
EV-EVP 450/A	0.25	71 A4	450	487	530	100	270	12.5
EV-EVP 500/A	0.55	80 A4	500	541	580	130	296	22
EV-EVP 315/D	0.18	71 A4	315	356	395	100	248	7
EV-EVP 355/D	0.18	71 A4	355	395	435	100	248	7.5
EV-EVP 400/D	0.22	71 B4	400	438	480	100	248	11
EV-EVP 450/D	0.45	80 B4	450	487	530	100	270	12.5
EV-EVP 500/D	0.9	90 B4	500	541	580	130	296	22

Please note (1) - all drawings measurements are in millimeters (mm)
 Please note (2) - above technical specifications are subject to change

AIR CONTROL INDUSTRIES LTD
 Weycroft Avenue, Millwey Industrial Estate,
 Axminster, Devon, EX13 5HU
 t: +44(0)1297 529242 f: +44(0)1297 529241
 e: sales@aircontrolindustries.com
 w: www.aircontrolindustries.com