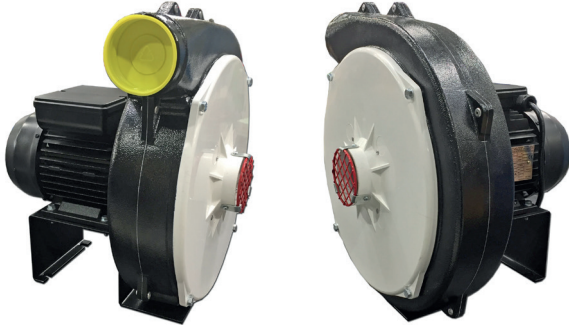


# Forge Fan Professional

Ref: 1MS11-00285

## General Characteristics:



*\*\*Image above may not be representative of unit supplied*

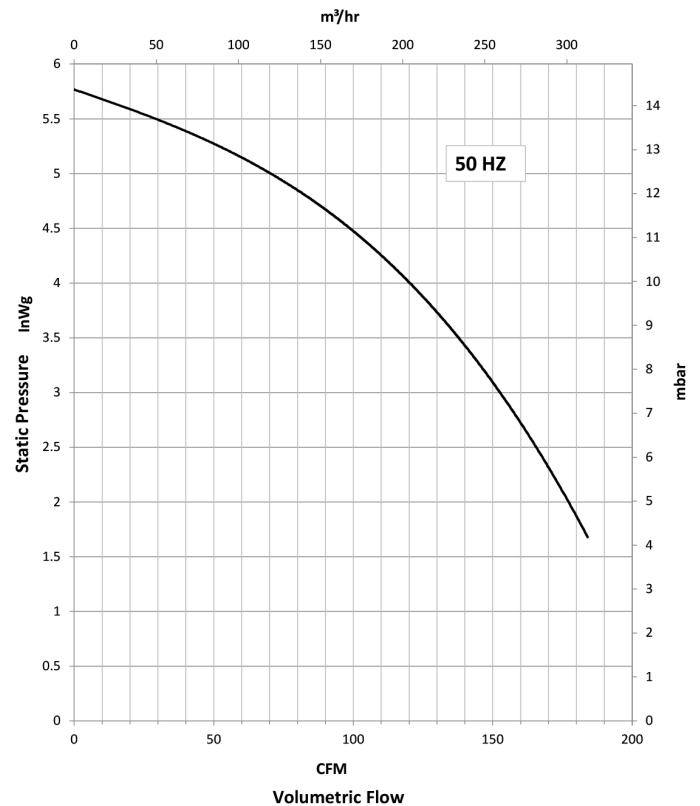
**Motor Type:** Induction type. IPh capacitor start and run

**Nominal supply:** 240V IPh 50/60Hz

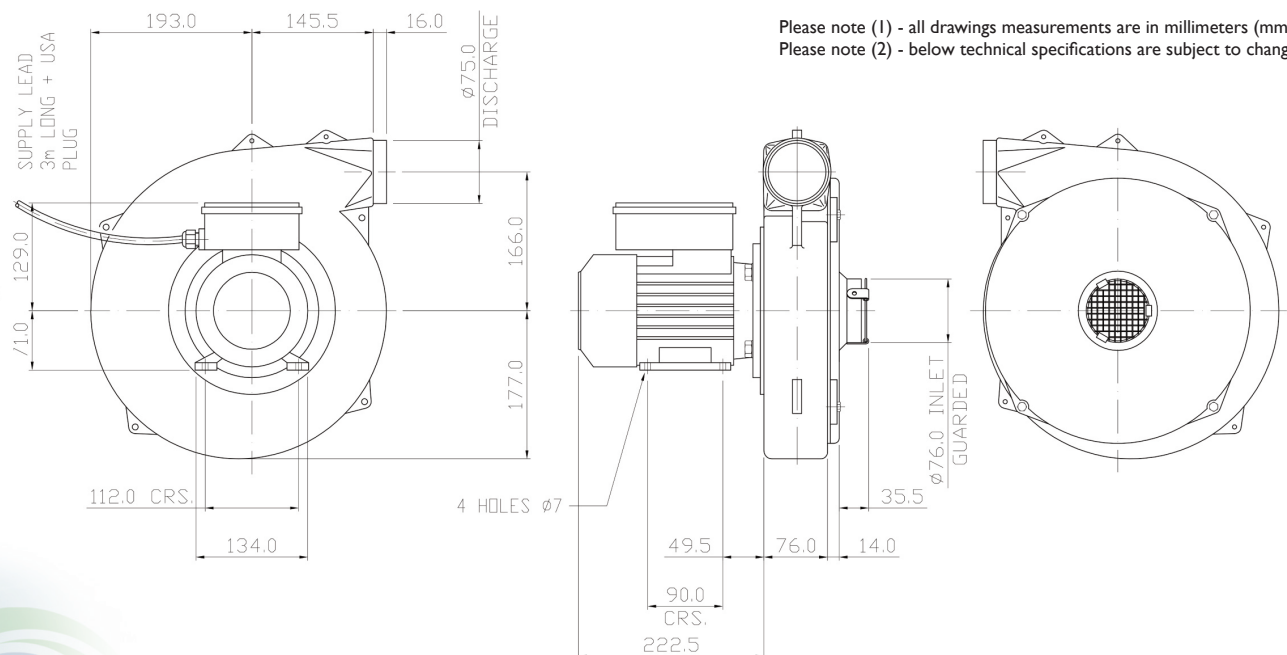
**Materials:**  
Inlets & Fanscrolls - Cast Aluminum  
Impellers - Aluminium 1200 H14  
Inlet - White Polyester Resin

**Finishes:** Powder coated (black) as standard

**Noise levels:** 69dB(A) Free Air, 1M



## Outline Drawing:



Please note (1) - all drawings measurements are in millimeters (mm)  
Please note (2) - below technical specifications are subject to change

**Air Control Industries Ltd**

Weycroft Avenue, Millwey Rise Industrial Estate,  
Axminster, Devon, EX13 5HU, United Kingdom

Tel: +44(0)1297 529242 Fax: +44(0)1297 529241

Email: [sales@aircontrolindustries.com](mailto:sales@aircontrolindustries.com)

[www.aircontrolindustries.com](http://www.aircontrolindustries.com)