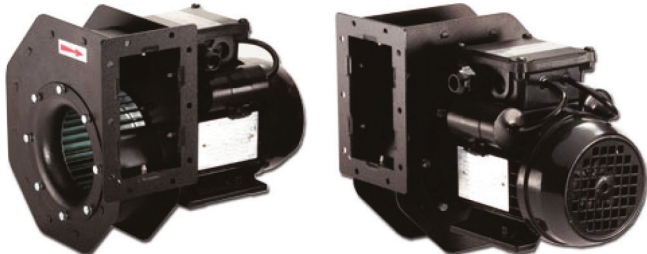


HFM 108/42

Single Inlet Centrifugal Fan (2 pole)

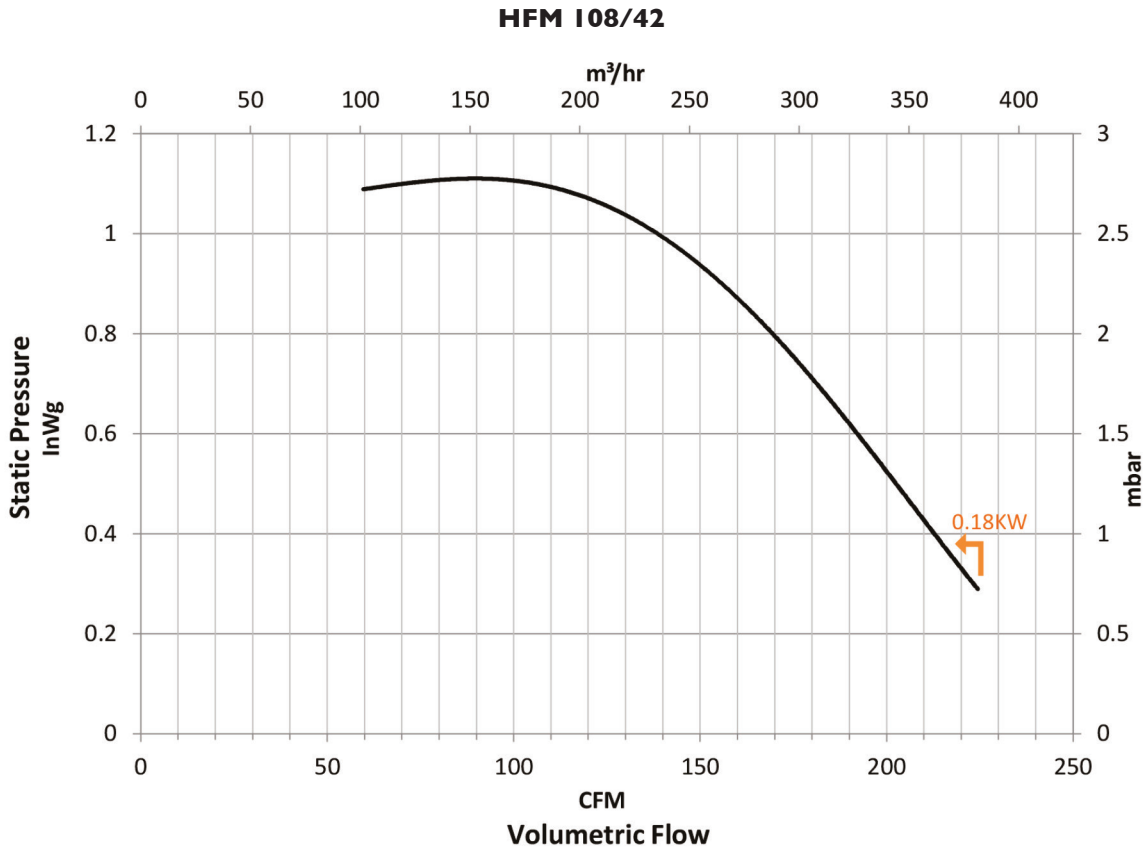
General Characteristics:



[Please note - image above may not be representative of the unit supplied]

Motor type:	Standard motors are IP54 or IP55. More available on request
Nominal supply:	220/240V or 115V, 1Ph, 50/60Hz Others available on request
Materials & Finishes:	Sheet steel and powder coated (standard finish in black) Options include Stainless Steel (304 or 316); Aluminum - unpainted or powder coated
Motor variations:	ATEX, CE, CSA, UL available on request
Noise levels (max):	70.1dB(A) Free Air, IM

Performance Curves:



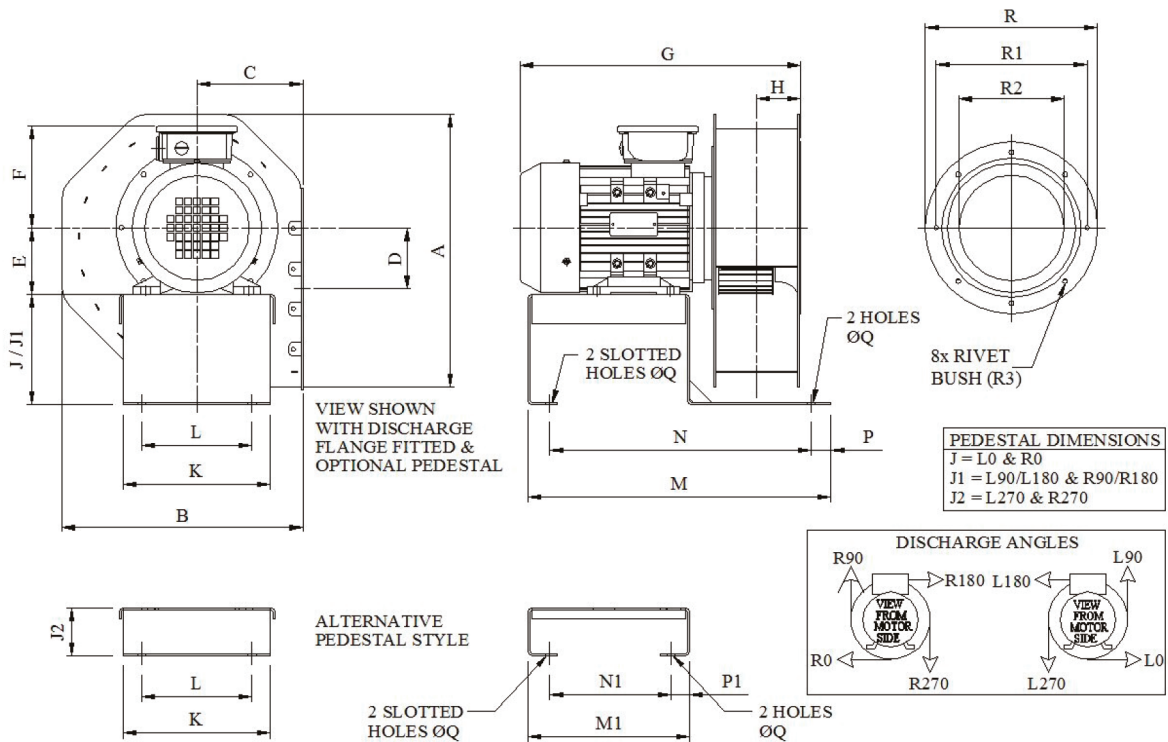
HFM 108/42

Single Inlet Centrifugal Fan (2 pole)

Outline Drawing:

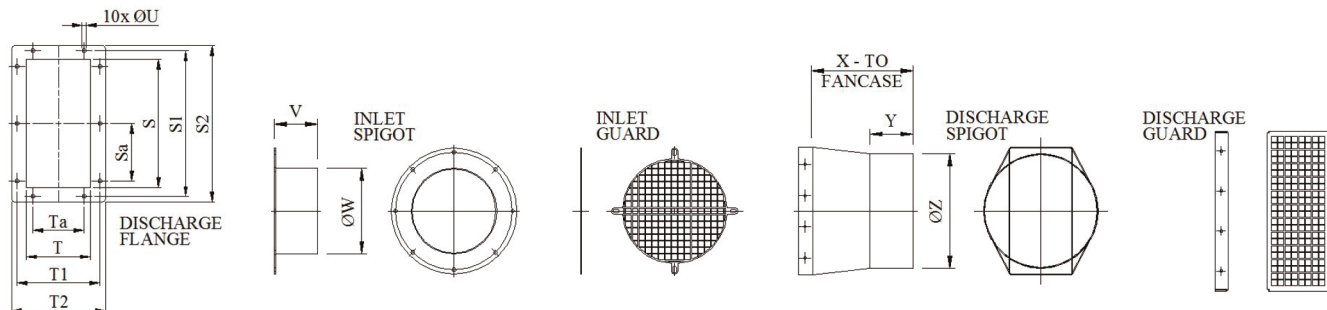
Model	Power (kW)	FAN								OPTIONAL PEDESTAL								INLET					WEIGHT (KG)			
		A	B	C	D	E	F	G	H	J	J1	J2	K	L	M	M1	N	N1	P	P1	ØQ	R		R1	R2	R3
HFM-108/42	0.18	230	212	98	57	63	125	258	36	105	75	44	112	100	317	170	270	130	27	27	11	140	125	82	M5	6.2

[Note - Dimensions 'F' & 'G' may vary depending on motor style. Weights specified are for standard units with no accessories attached.]



Accessories:

Model	DISCHARGE FLANGE								INLET SPIGOT		DISCHARGE SPIGOT			
	S	S1	S2	Sa	T	T1	T2	Ta	ØU	V	ØW	X	Y	ØZ
HFM-108/42	120	145	160	55	67	90	109	50	6	50	100	103	50	100



Please note(1) - all drawing measurements are millimetres
 Please note(2) - above technical specifications maybe subject to change
 Please note(3) - image of fan may not be representative of the unit supplied

Air Control Industries Ltd
 Weycroft Avenue, Millwey Rise Industrial Estate,
 Axminster, Devon, EX13 5HU, United Kingdom
 Tel: +44(0)1297 529242 Fax: +44(0)1297 529241
 Email: sales@aircontrolindustries.com

www.aircontrolindustries.com