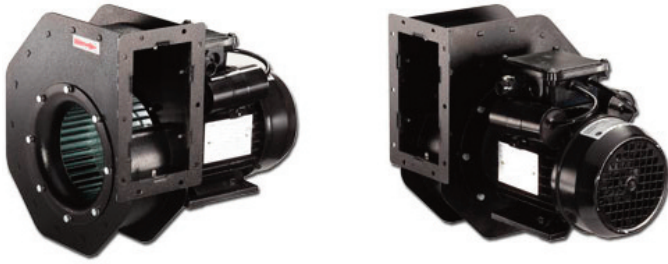


HFM 160/62

Single Inlet Centrifugal Fan (2 pole)

General Characteristics:

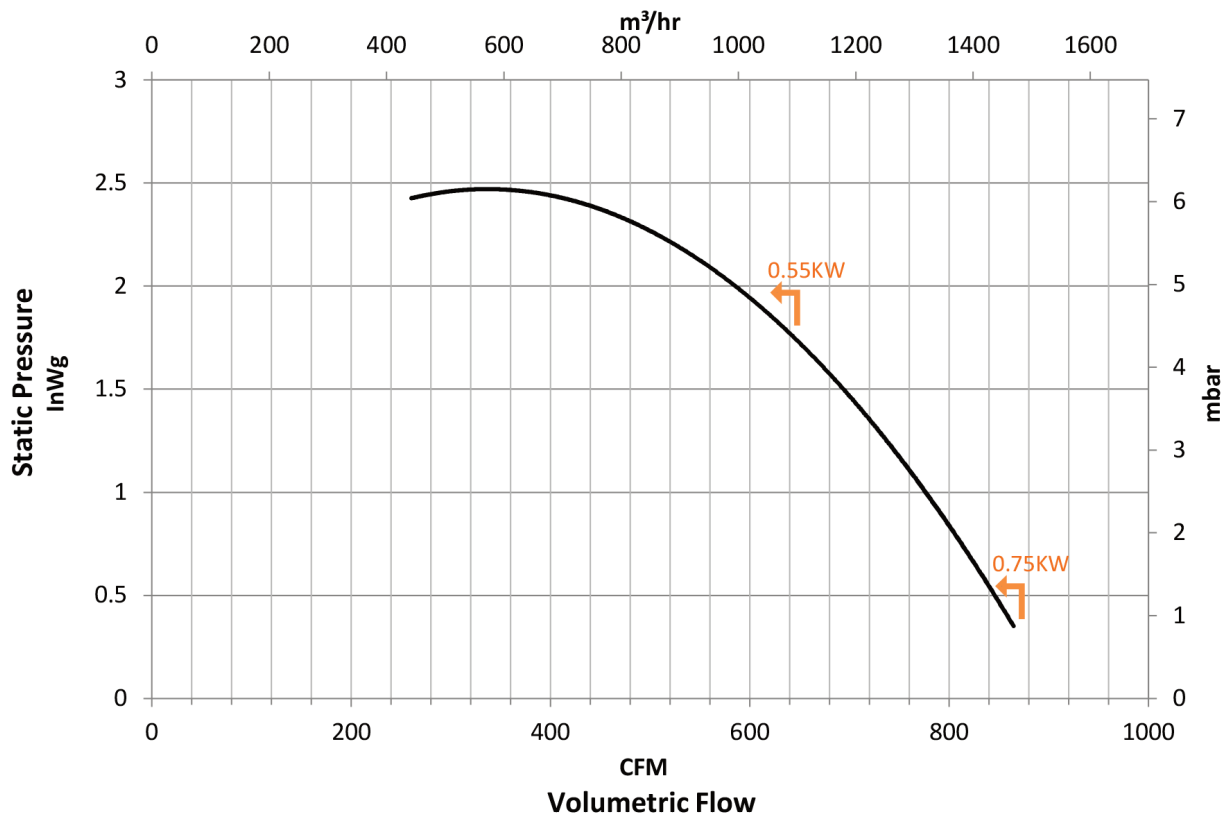


[Please note - image above may not be representative of the unit supplied]

Motor type:	Standard motors are IP54 or IP55. More available on request
Nominal supply:	220/240V or 115V, 1Ph, 50/60Hz Others available on request
Materials & Finishes:	Sheet steel and powder coated (standard finish in black) Options include Stainless Steel (304 or 316); Aluminum - unpainted or powder coated
Motor variations:	ATEX, CE, CSA, UL available on request
Noise levels (max):	87.5dB(A) Free Air, 1M

Performance Curves:

HFM-160/62



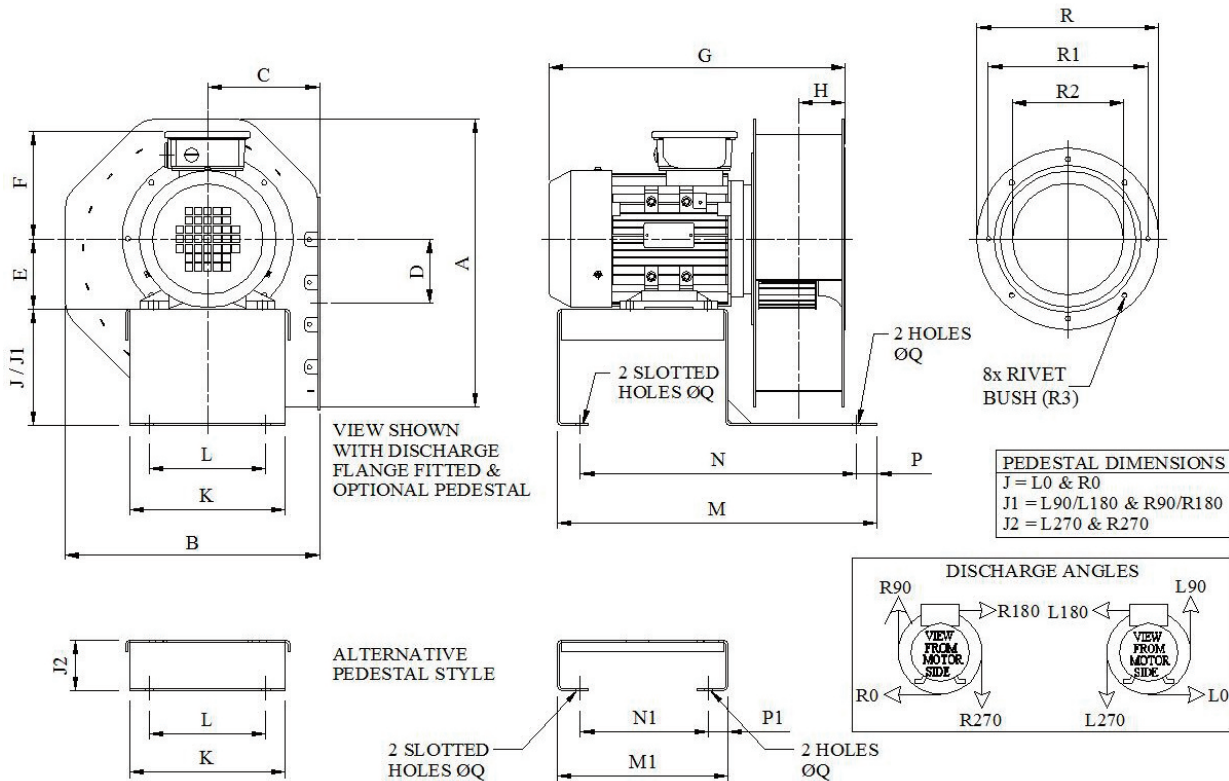
HFM 160/62

Single Inlet Centrifugal Fan (2 pole)

Outline Drawing:

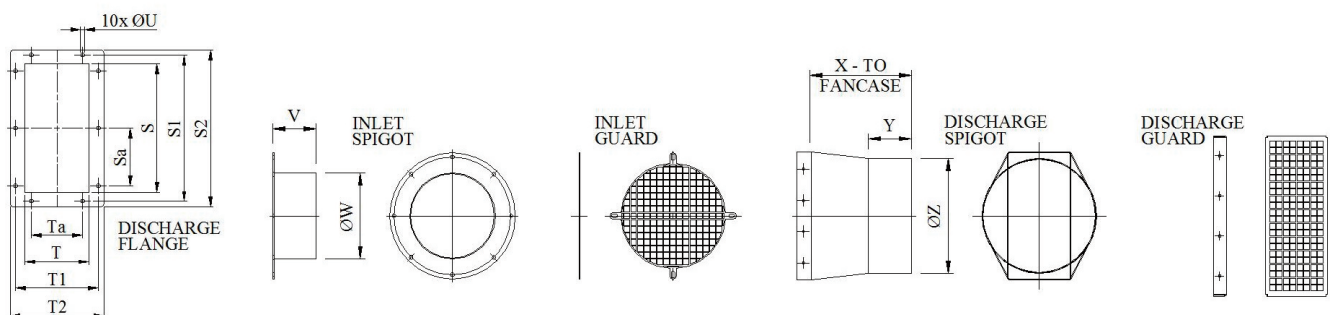
		FAN								OPTIONAL PEDESTAL										INLET				WEIGHT		
Model	Power (kW)	A	B	C	D	E	F	G	H	J	J1	J2	K	L	M	M1	N	N1	P	P1	ØQ	R	R1	R2	R3	(KG)
HFM-160/62	0.55	335	297	131	73	71	133	323	53	150	115	65	200	150	412	220	355	165	27	25	11	205	190	127	M6	11.2
	0.75					80	133	358																		14.5

[Note - Dimensions 'F' & 'G' may vary depending on motor style. Weights specified are for standard units with no accessories attached.]



Accessories:

Model	DISCHARGE FLANGE								INLET SPIGOT		DISCHARGE SPIGOT			
	S	S1	S2	Sa	T	T1	T2	Ta	ØU	V	ØW	X	Y	ØZ
HFM-160/62	200	220	240	90	100	125	142	80	7	50	125	153	75	150



Please note(1) - all drawing measurements are millimetres
Please note(2) - above technical specifications maybe subject to change
Please note(3) - image of fan may not be representative of the unit supplied