



Multi Stage MS8(dc)

Backward Curved, Single Inlet Centrifugal Fans

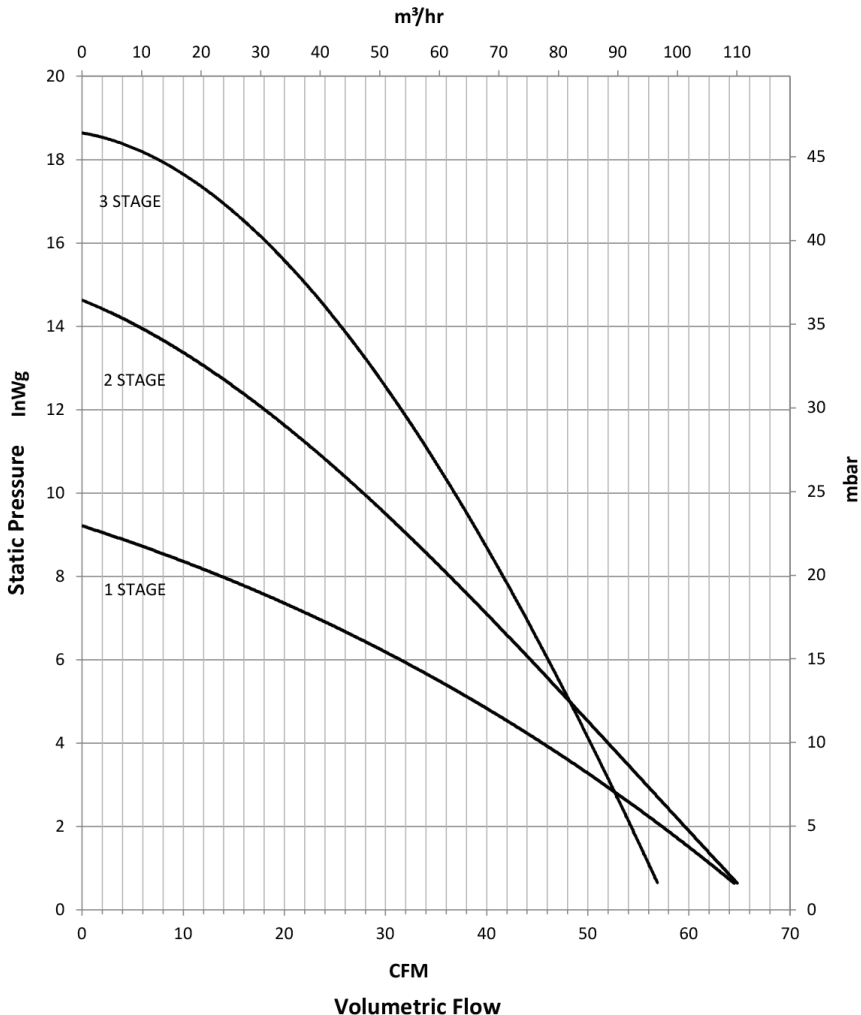
General Characteristics:



Motor type:	24VDC Brushless
Ancillaries:	Inlet and discharge guards, sockets (BSP fittings), inlet spigots, hose, adaptors, filtered inlets, speed controllers
Materials:	Inlets & Fanscrolls: White polyester resin Impellers: Aluminium 1200 H14 Stators: White polyester resin
Bearings:	Ball type, lubricated for life
Mounting options:	Build-in- type / with feet / floor-stand
Noise levels:	1 through to 3 stage 77dB(A) Free Air, 1M

[Please note - image above may not be representative of the unit supplied]

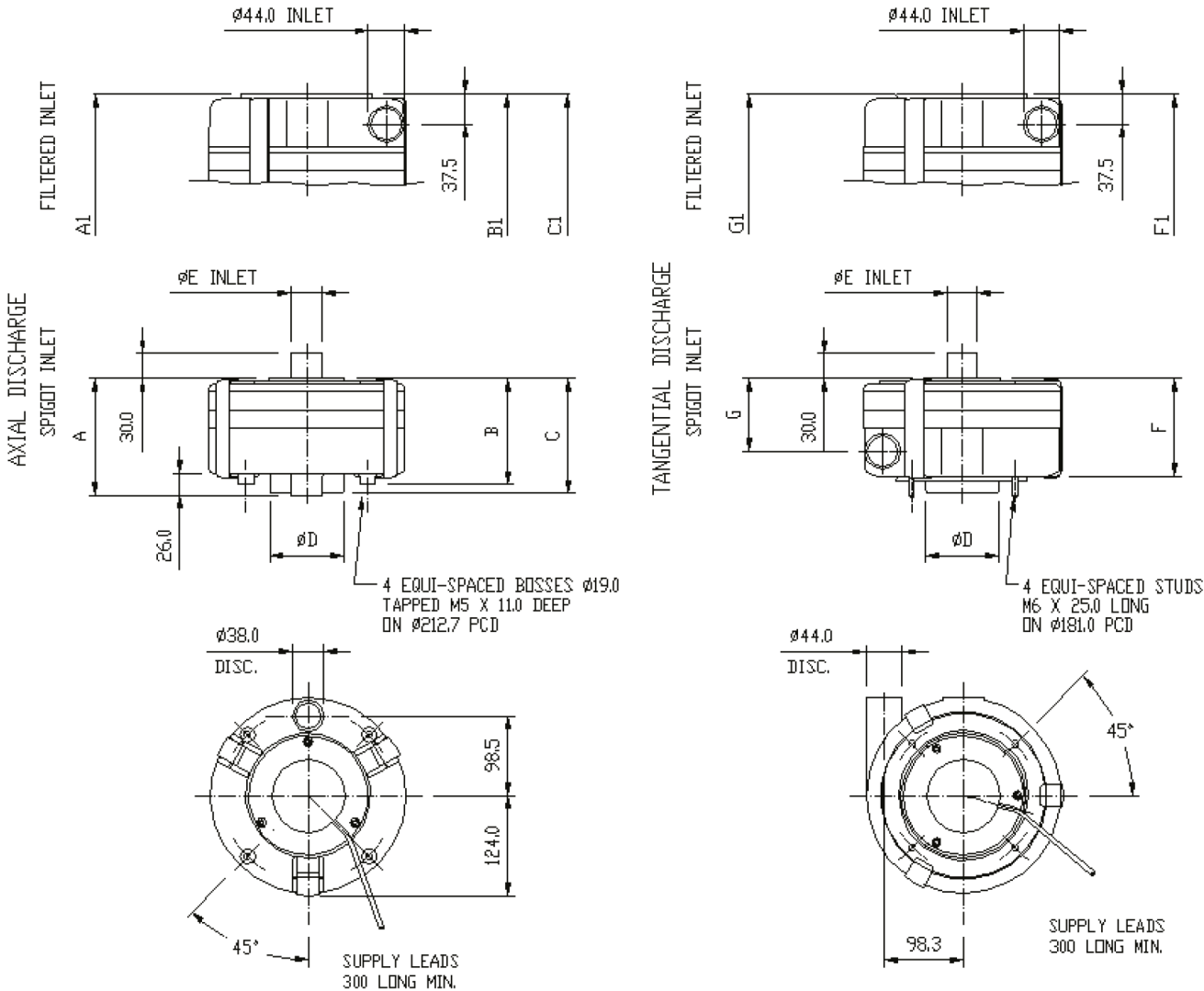
Performance Details:



Multi Stage MS8(dc)

Backward Curved, Single Inlet Centrifugal Fans

outline dimension details (build in type):



	A	A1	B	B1	C	C1	D	E	F	F1	G	G1
1MS8	99.5	155	86.5	142	98	153.5	91	$\phi 44/\phi 38/\phi 32$	77	132.5	46	101.5
2MS8	122	177.5	109	164.5	120.5	176	91	$\phi 44/\phi 38/\phi 32$	99.5	155	68.5	124
3MS8	145	200.5	132	187.5	143	198.5	91	$\phi 44/\phi 38/\phi 32$	122	177.5	91	146.5

Please note (1) - all drawings measurements are in millimeters (mm)
 Please note (2) - above technical specifications are subject to change

Air Control Industries Ltd
 Weycroft Avenue, Millwey Rise Industrial Estate,
 Axminster, Devon, EX13 5HU, United Kingdom
 Tel: +44(0)1297 529242 Fax: +44(0)1297 529241
 Email: sales@aircontrolindustries.com

www.aircontrolindustries.com