

# Forward curved - High efficiency

# Centrifugal Fan HFM-HE

Single Inlet Centrifugal Fan



## Details

<b>Motor type:</b>	Totally enclosed, fan-cooled [TEFC] IP55 motor as standard Other options available on request
<b>Nominal supply:</b>	1 Ph or 3Ph 50/60Hz
<b>Inlet &amp; Discharge:</b>	Guards, inlet filters, spigots, pedestals
<b>Materials:</b>	Fancase: Mild steel as standard Stainless steel 304 and 316 optional Impellers: Galvanised steel as standard Stainless steel 304 and 316 optional

<b>Finishes:</b>	Powder coated black as standard Other colours and finishes available
<b>Mounting options:</b>	Motor feet or pedestals
<b>Motor variations:</b>	ATEX, IECEx, CE

**\*Most options can be tailored to your required specifications**



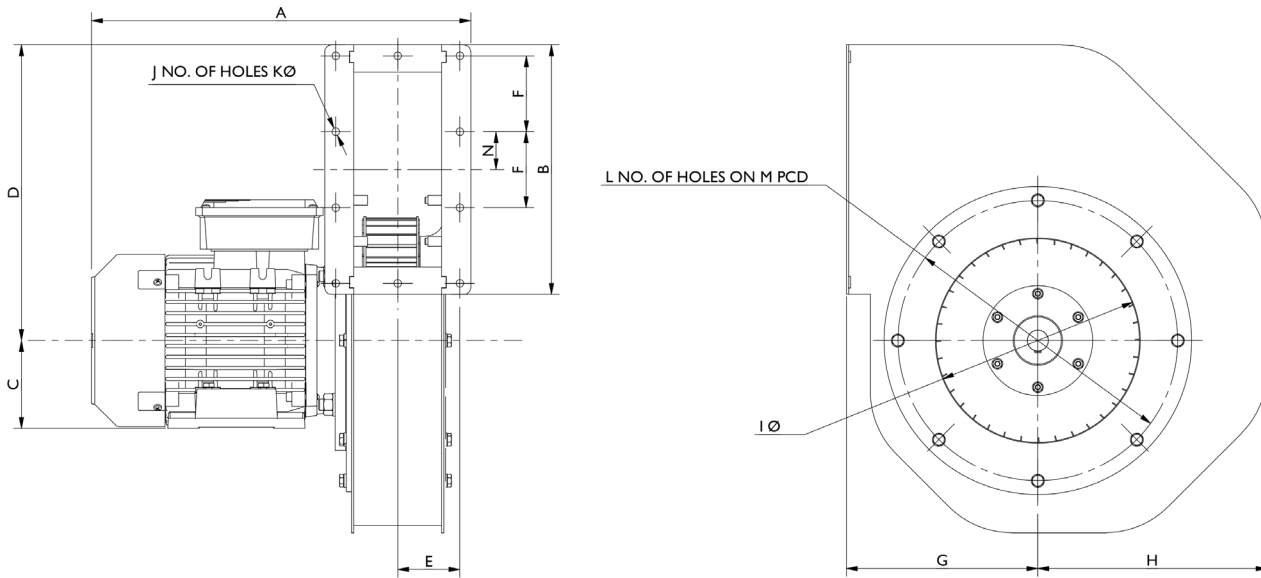
**AIR CONTROL  
INDUSTRIES**

shaping air movement since 1969

E: [sales@aircontrolindustries.com](mailto:sales@aircontrolindustries.com)

W: [www.aircontrolindustries.com](http://www.aircontrolindustries.com)

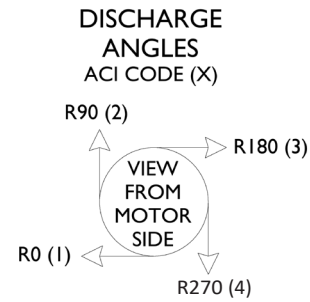
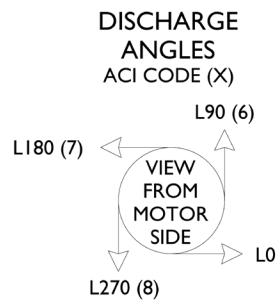
## Outline Dimensions



Fan Size	FAN DIMENSIONS													
	A TYP.	B	C TYP.	D	E	F	G	H	I	J	K	L	M	N
HFM-108-30	264.5	135.0	56.0	142.1	43.5	57.5	85.7	104.3	86.0	8	7.0	8	130.0	0.0
HFM-133-40	274.5	155.0	56.0	169.4	48.5	35.5	105.1	126.6	110.0	10	7.0	8	155.0	32.0
HFM-160-50	295.0	175.0	63.0	198.0	53.5	77.5	124.0	150.7	130.3	8	7.0	8	190.0	0.0
HFM-180-50	328.5	190.0	71.0	219.3	55.0	89.0	139.5	168.6	150.5	8	7.0	8	205.0	0.0
HFM-200-50	323.0	207.0	71.0	241.6	51.0	66.3	155.0	186.5	152.7	10	7.0	8	232.0	31.2
HFM-225-50	345.5	227.0	80.0	268.9	56.5	69.0	174.4	208.7	186.7	10	7.0	8	255.0	34.5

Please note:

1. Dimensions may vary depending on chosen motor specification
2. Weights specified are for standard units with no accessories attached
3. All drawings measurements are in millimetres (mm)
4. Technical specifications are subject to change



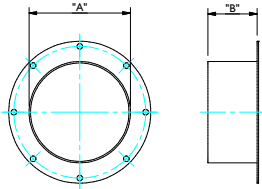
**AIR CONTROL INDUSTRIES**

shaping air movement since 1969

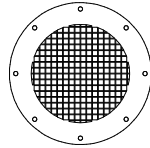
E: [sales@aircontrolindustries.com](mailto:sales@aircontrolindustries.com)

W: [www.aircontrolindustries.com](http://www.aircontrolindustries.com)

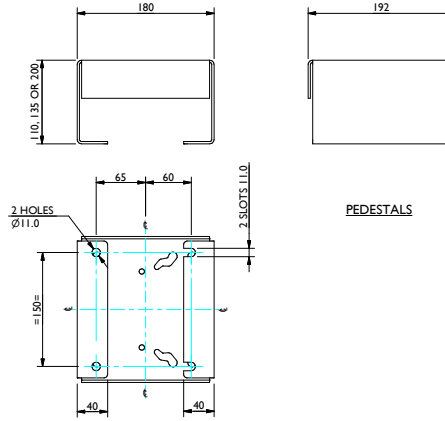
## Standard Accessories



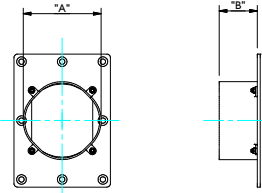
INLET SPIGOTS		
FAN TYPE	DIM "A"	DIM "B"
HFM-108/30	100mm (4")	50mm (2")
HFM-133/40	100mm (4")	50mm (2")
HFM-160/50	150mm (6")	50mm (2")
HFM-180/50	150mm (6")	75mm (3")
HFM-200/50	150mm (6")	75mm (3")
HFM-225/50	200mm (8")	75mm (3")



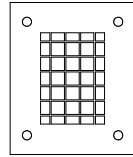
INLET GUARDS



PEDESTALS



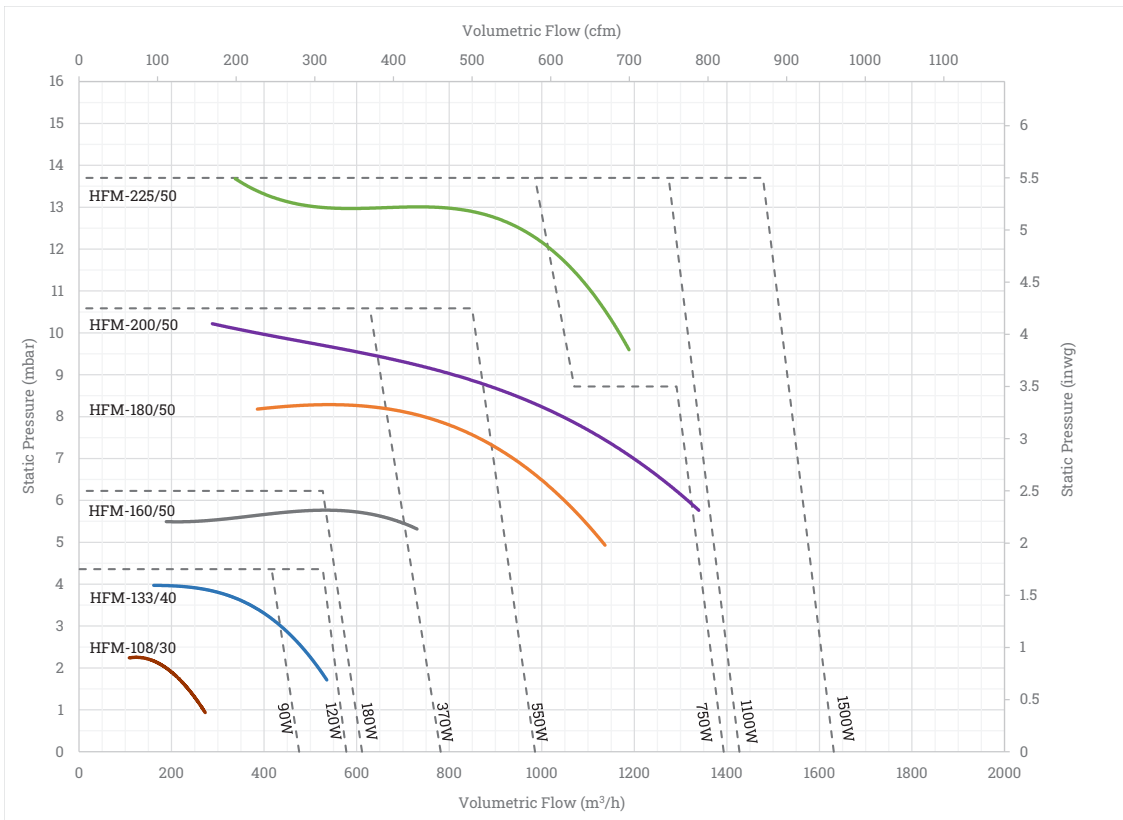
DISCHARGE SPIGOTS		
FAN TYPE	DIM "A"	DIM "B"
HFM-108/30	100mm (4")	50mm (2")
HFM-133/40	100mm (4")	50mm (2")
HFM-160/50	150mm (6")	50mm (2")
HFM-180/50	150mm (6")	75mm (3")
HFM-200/50	150mm (6")	75mm (3")
HFM-225/50	200mm (8")	75mm (3")



DISCHARGE GUARDS

PEDESTAL OPTIONS		
FAN TYPE	MOTOR FRAME SIZE	PEDESTAL HEIGHT OPTIONS
HFM-108/30	63	110, 135 AND 200
HFM-133/40	63	110, 135 AND 200
HFM-133/70	71	110, 135 AND 200
HFM-160/50	71	135 AND 200
HFM-160/50	80	135 AND 200
HFM-160/50	90	110, 135 AND 200
HFM-180/50	71	200
HFM-180/50	80	200
HFM-180/50	90	135 AND 200
HFM-200/50	71	200
HFM-200/50	80	200
HFM-200/50	90	200
HFM-225/50	71	200
HFM-225/50	80	200
HFM-225/50	90	200

## Performance Graph



Please note:

1. Performance graphs show data tested to BS EN ISO 5801:2017 standard and represent typical 50Hz motor speed
2. Imagery may not be representative of the unit supplied



**AIR CONTROL INDUSTRIES**

shaping air movement since 1969

E: [sales@aircontrolindustries.com](mailto:sales@aircontrolindustries.com)

W: [www.aircontrolindustries.com](http://www.aircontrolindustries.com)