

Slimline Fans

A range of curved forward bladed centrifugal fans for space premium applications



Features across the Slimline range include an external rotor motor built into the fan, plus fully integrated bearings - an assembly that helps to shorten the fan, permits precision balancing and achieves efficient motor cooling being located directly in the centre of the air stream generated, which enhances the fan unit's longevity.

All fans are manufactured with a precision gravity die cast aluminium fan scroll giving a slim profile that allows flush mounting on the inlet or discharge by means of tapped holes. The scroll is light in weight and also gives assistance to noise reduction compared with sheet metal fabrications. Units have a separate inlet plate which also gives versatility enabling it to be mounted into customer-made inlet arrangements or any other special features that may be required.

Key Performance Figures:

- Flow rates up to 1275m³/hr (750cfm)
- Pressure up to 7.5mBar (3In.Swg)
- 25W (0.034HP) to 375W (0.5HP)

Typical Applications

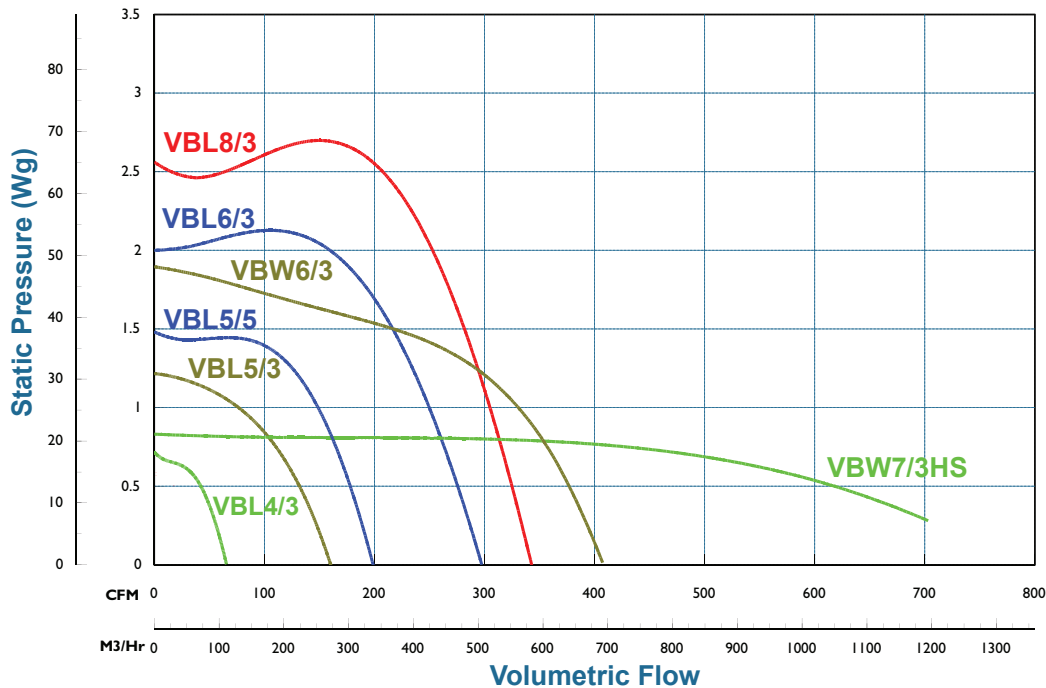
- Fume cupboards
- Laminar flow benches
- Solder fume extraction
- UV lamp cooling
- DC motor cooling
- Light industrial applications

Slimline Fans

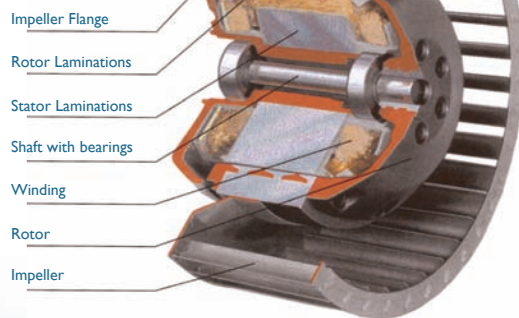
A range of curved forward bladed centrifugal fans for space premium applications

50Hz Performance Curves:

The illustrated curves are for 240V 1 Ph 50Hz and for selection purposes only.
For full performance details please refer to the specific data sheets.



Section of an External Rotor Motor



Unique External Motor Rotor Design

Like any other electric motor, the external rotor motor consists of a stator wound with copper wire and a rotor. The unique difference is, however, that the rotor rotates externally, with the stator at its centre. As it contains integrated bearings, the motor is surprisingly short and makes for a very compact fan unit once it is directly built into the impeller. This singular integration of the rotating parts permits precision balancing and reduces mechanical stress on the bearings tremendously.

All standard units are Class 'B' insulation and fitted with ball bearing sealed for life and the lubricant is suitable for temperatures of -15°C up to 40°C. Typical life expectancy is 40,000 hours.

Air Control Industries Ltd

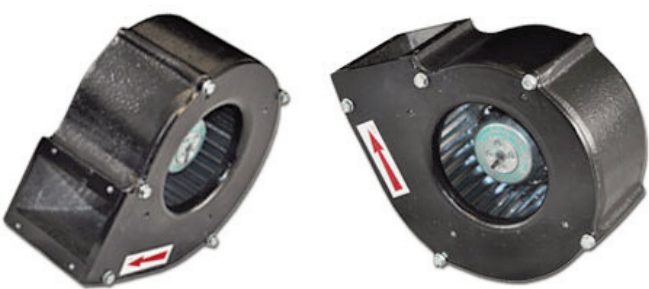
Weycroft Avenue, Millwey Rise Industrial Estate,
Axminster, Devon, EX13 5HU, United Kingdom
Tel: +44(0)1297 529242 Fax: +44(0)1297 529241
Email: sales@aircontrolindustries.com

www.aircontrolindustries.com

Slimline Fan VBL4/3

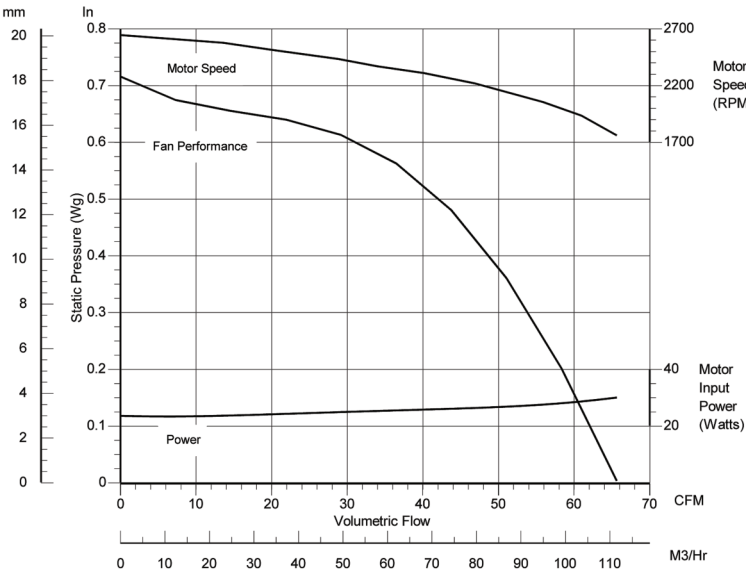
Single Inlet Centrifugal Fan

General Characteristics:

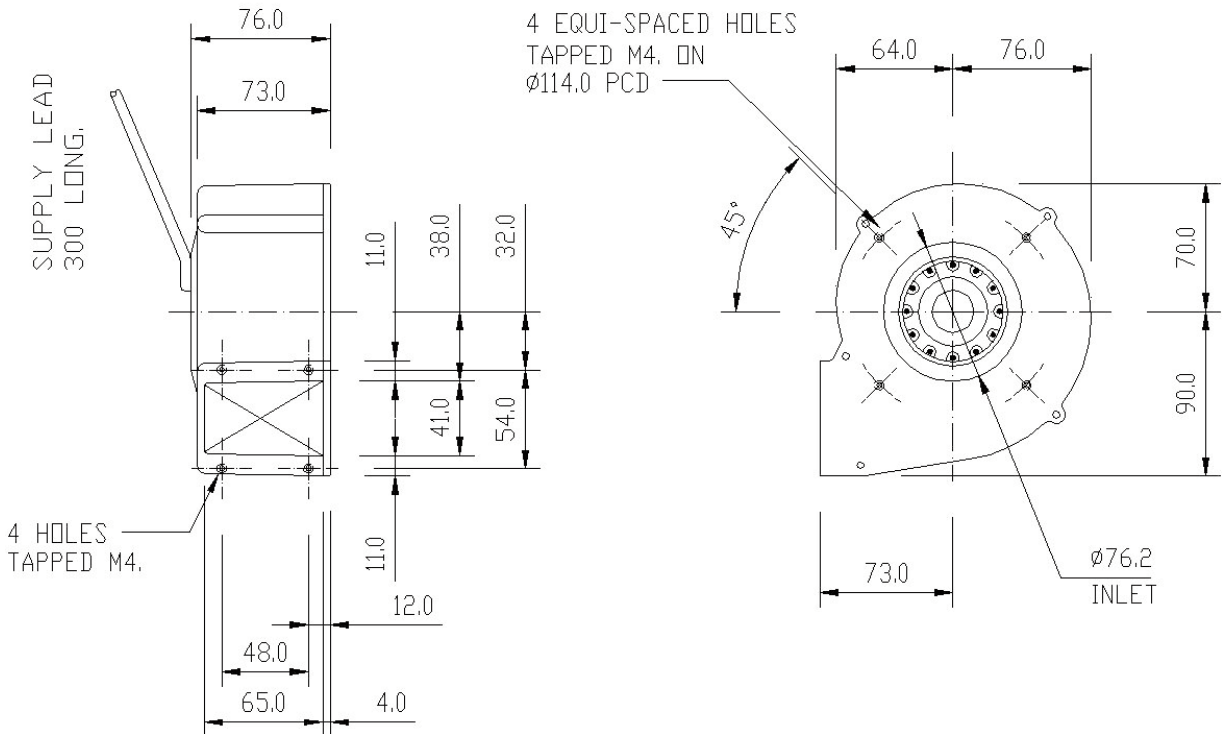


[Please note - image above may not be representative of the unit supplied]

Motor type:	External rotor motor / shaded pole induction IP44
Nominal supply:	230V 1Ph 50/60Hz 115V 1Ph 50/60Hz
Options:	Inlet & discharge guards, inlet filters
Materials:	Fancase - cast aluminium LM6 Impeller - galvanised sheet steel
Finishes:	Unpainted or stove enamel as std (black)
Mounting options:	Inlet & discharge drillings
Noise levels:	56.2dB(A) Free Air, 1 metre
Weight:	1.6Kg / 3.52Lbs



Outline dimensions:



Please note (1) - all drawings measurements are in millimeters (mm)
Please note (2) - above technical specifications are subject to change

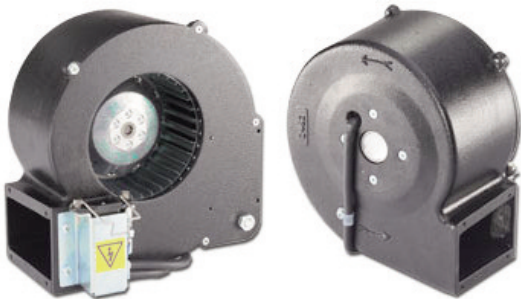
AIR CONTROL INDUSTRIES LTD

Weycroft Avenue, Millwey Industrial Estate,
Axminster, Devon, EX13 5HU
t: +44(0)1297 529242 f: +44(0)1297 529241
e: sales@aircontrolindustries.com
w: www.aircontrolindustries.com

Slimline Fan VBL5/3

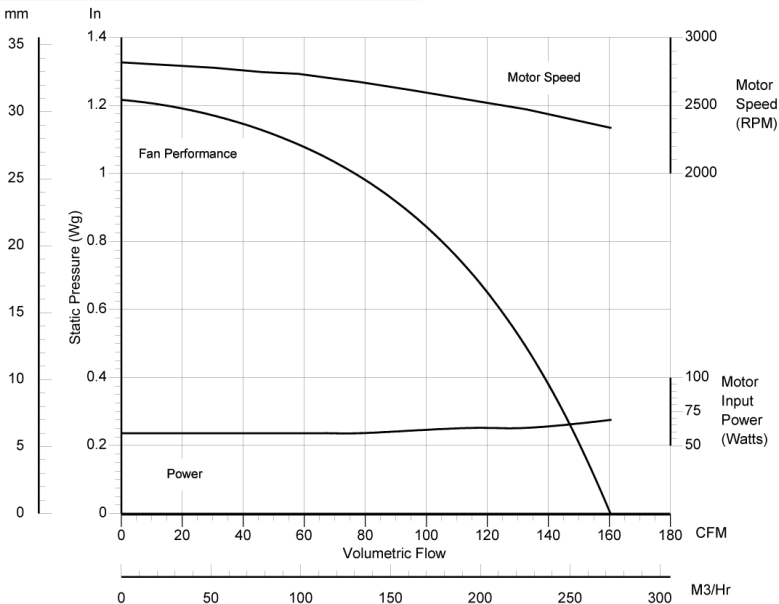
Single Inlet Centrifugal Fan

General Characteristics:

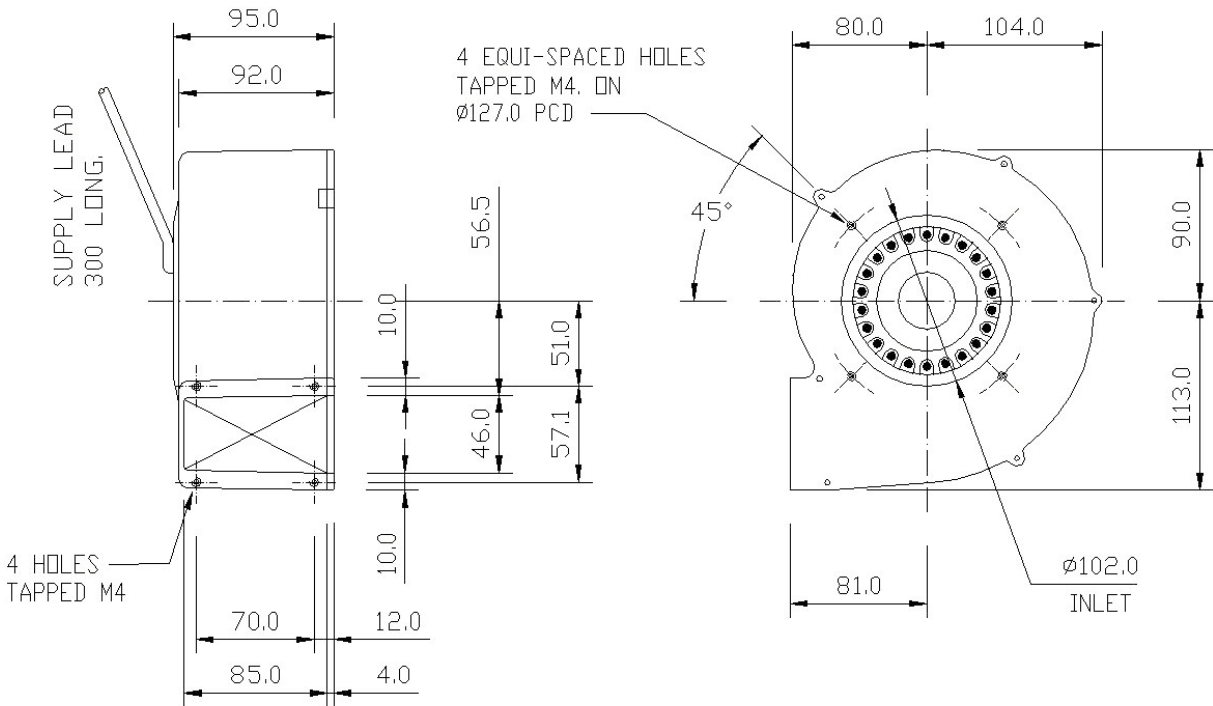


[Please note - image above may not be representative of the unit supplied]

Motor type:	External rotor motor / shaded pole induction IP44
Nominal supply:	230V 1Ph 50/60Hz 115V 1Ph 50/60Hz 380/440V 3Ph 50/60Hz
Options:	Inlet & discharge guards, inlet filters
Materials:	Fancase - cast aluminium LM6 Impeller - galvanised sheet steel
Finishes:	Unpainted or stove enamel as std (black)
Mounting options:	Foot, inlet & discharge drillings
Noise levels:	62.5dB(A) Free Air, 1 metre
Weight:	3.2Kg / 7.05Lbs



Outline dimensions:



Please note (1) - all drawings measurements are in millimeters (mm)
Please note (2) - above technical specifications are subject to change

AIR CONTROL INDUSTRIES LTD

Weycroft Avenue, Millwey Industrial Estate,
Axminster, Devon, EX13 5HU

t: +44(0)1297 529242 f: +44(0)1297 529241

e: sales@aircontrolindustries.com

w: www.aircontrolindustries.com

Slimline Fan VBL5/5

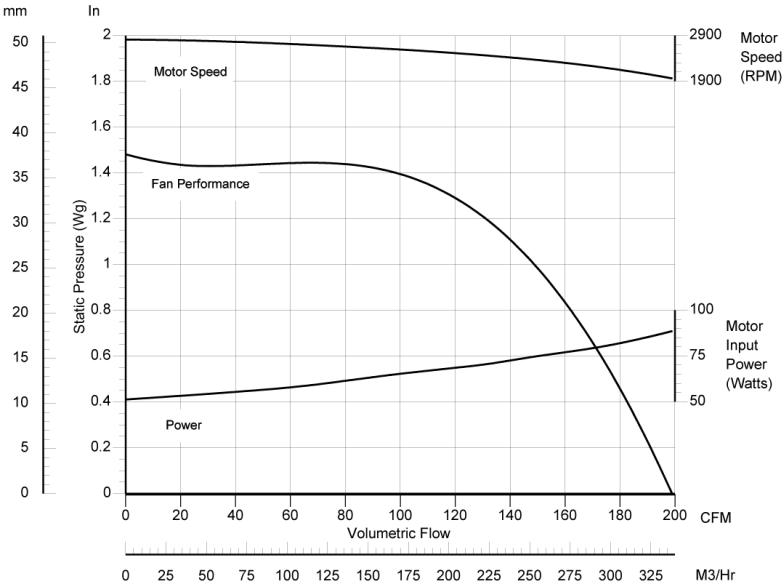
Single Inlet Centrifugal Fan

General Characteristics:

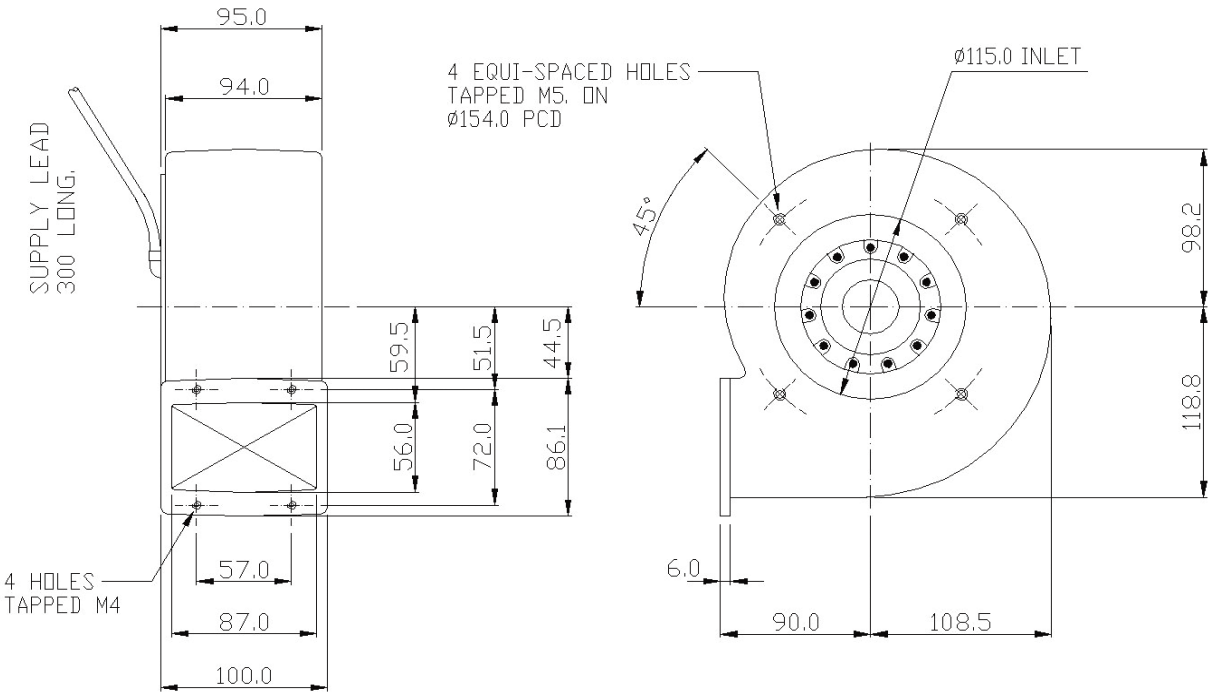


[Please note - image above may not be representative of the unit supplied]

Motor type:	External rotor motor / shaded pole induction IP44
Nominal supply:	115V 1Ph 50/60Hz 230V 1Ph 50/60hz
Options:	Inlet & discharge guards
Materials:	Fancase - cast aluminium LM6 Impeller - galvanised sheet steel
Finishes:	Unpainted or stove enamel as std (black)
Mounting options:	Foot, inlet & discharge drillings
Noise levels:	63.5dB(A) Free Air, 1 metre
Weight:	3Kg / 6.6Lbs



Outline dimensions:



Please note (1) - all drawings measurements are in millimeters (mm)
Please note (2) - above technical specifications are subject to change

AIR CONTROL INDUSTRIES LTD

Weycroft Avenue, Millwey Industrial Estate,

Axminster, Devon, EX13 5HU

t: +44(0)1297 529242 f: +44(0)1297 529241

e: sales@aircontrolindustries.com

w: www.aircontrolindustries.com

Slimline Fan VBL6/3

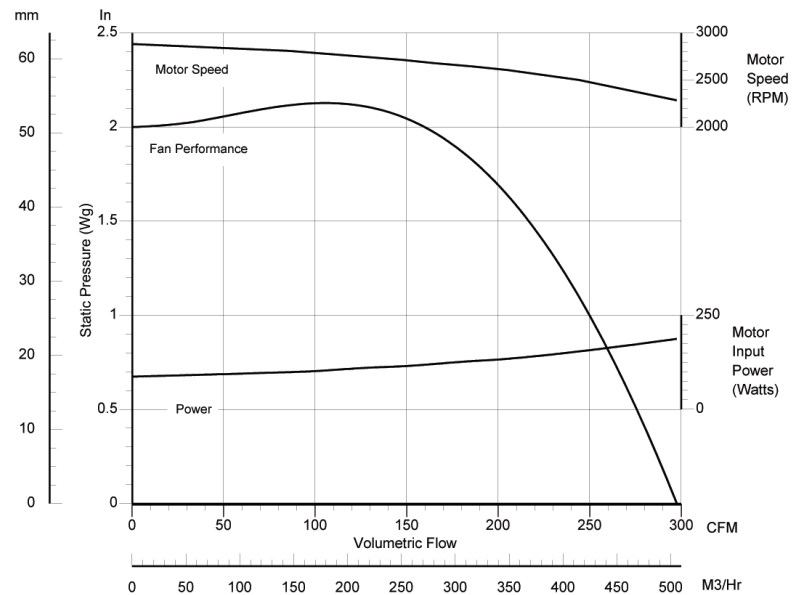
Single Inlet Centrifugal Fan

General Characteristics:

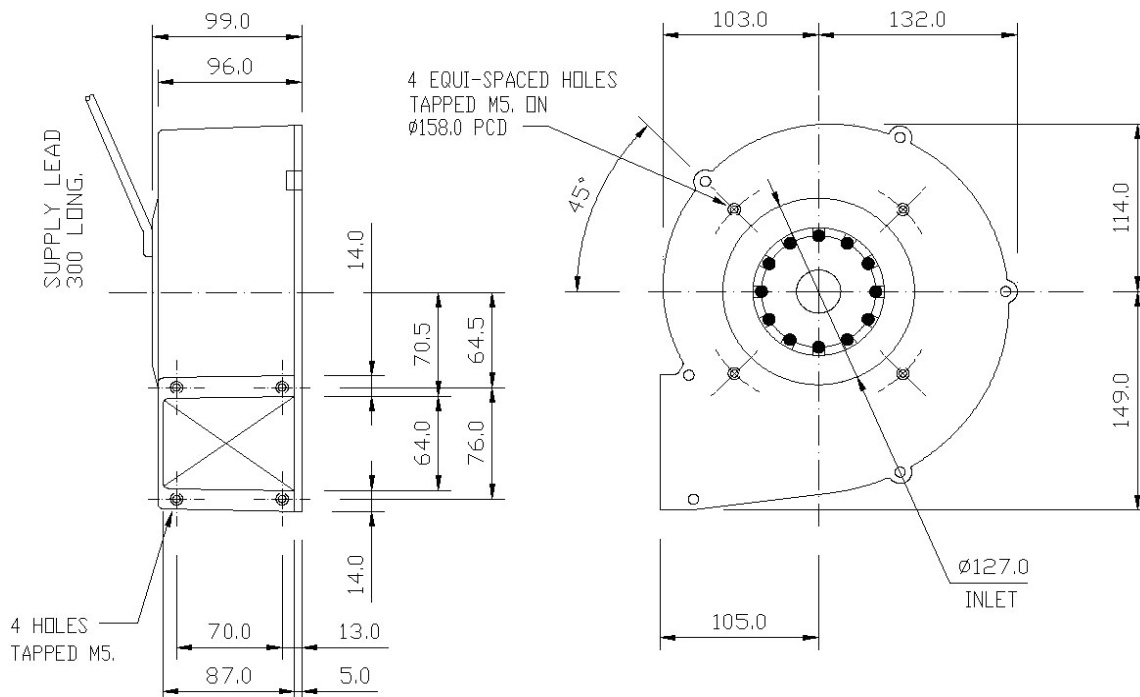


[Please note - image above may not be representative of the unit supplied]

Motor type:	External rotor motor / shaded pole induction IP44
Nominal supply:	230V 1Ph 50/60Hz 115V 1Ph 50/60Hz 400V, 3Ph, 50Hz
Options:	Inlet & discharge guards, spigots, inlet filters
Materials:	Fancase - cast aluminium LM6 Impeller - galvanised sheet steel
Finishes:	Unpainted or stove enamel as std (black)
Mounting options:	Foot, inlet & discharge drillings
Noise levels:	75.5dB(A) Free Air, 1 metre
Weight:	4.8Kg / 10.58Lbs



Outline dimensions:



Please note (1) - all drawings measurements are in millimeters (mm)
Please note (2) - above technical specifications are subject to change

AIR CONTROL INDUSTRIES LTD
Weycroft Avenue, Millwey Industrial Estate,
Axminster, Devon, EX13 5HU
t: +44(0)1297 529242 f: +44(0)1297 529241
e: sales@aircontrolindustries.com
w: www.aircontrolindustries.com

Slimline Fan VBL8/3

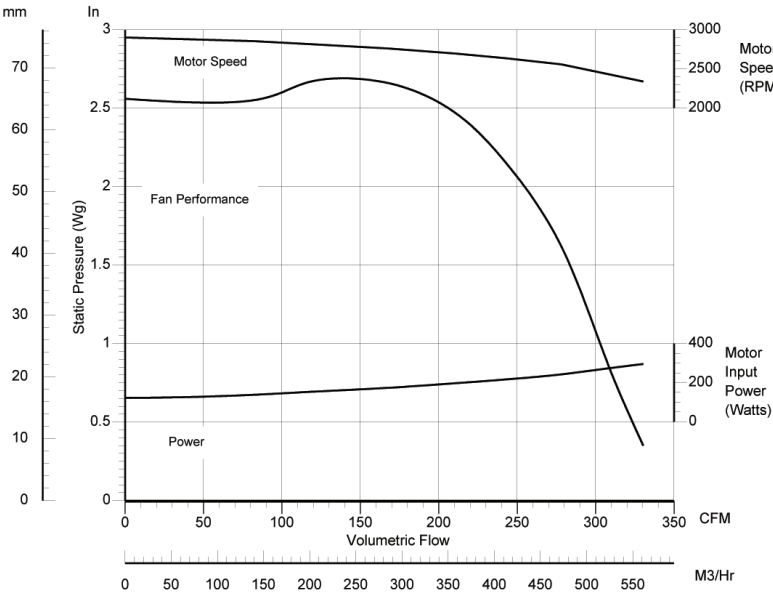
Single Inlet Centrifugal Fan

General Characteristics:

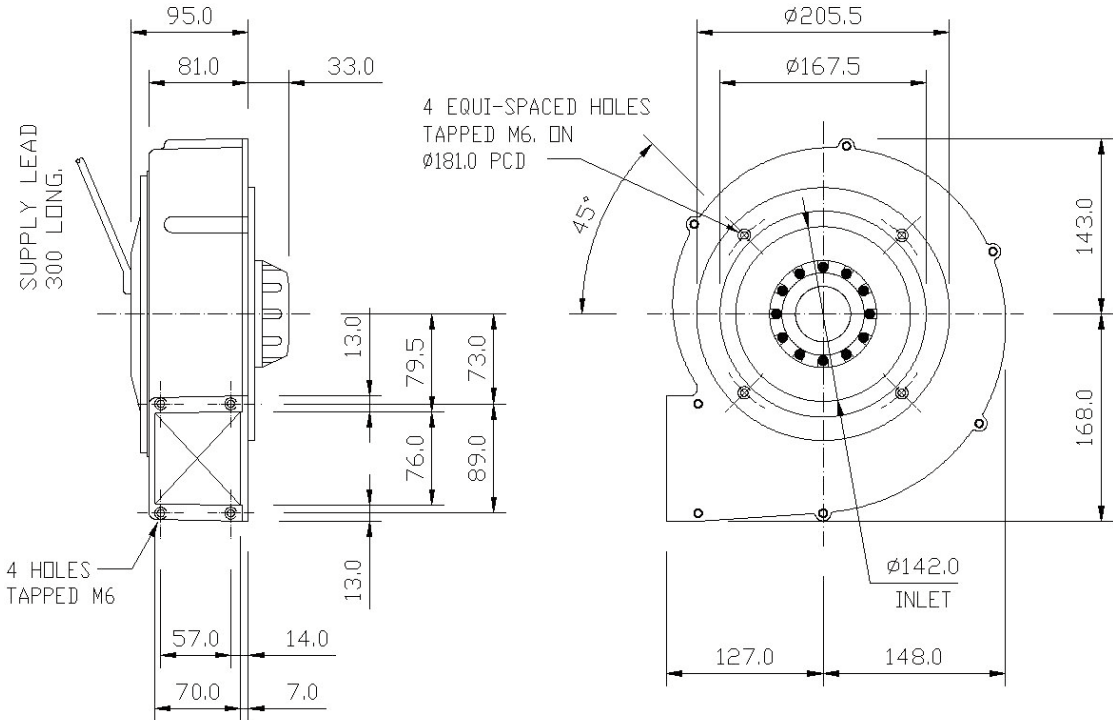


[Please note - image above may not be representative of the unit supplied]

Motor type:	External rotor motor / shaded pole induction IP44
Nominal supply:	230V 1Ph 50/60Hz 115V 1Ph 50/60Hz
Ancillaries:	Inlet & discharge guards, spigots, inlet filters
Materials:	Fancase - cast aluminium LM6 Impeller - galvanised sheet steel
Finishes:	Unpainted or stove enamel as std (black)
Mounting options:	Foot, inlet & discharge drillings
Noise levels:	75.6dB(A) Free Air, 1 metre
Weight:	4.8Kg / 10.5Lbs



Outline dimensions:



Please note (1) - all drawings measurements are in millimeters (mm)
Please note (2) - above technical specifications are subject to change

AIR CONTROL INDUSTRIES LTD

Weycroft Avenue, Millwey Industrial Estate,
Axminster, Devon, EX13 5HU

t: +44(0)1297 529242 f: +44(0)1297 529241

e: sales@aircontrolindustries.com

w: www.aircontrolindustries.com

Slimline Fan VBW6/3

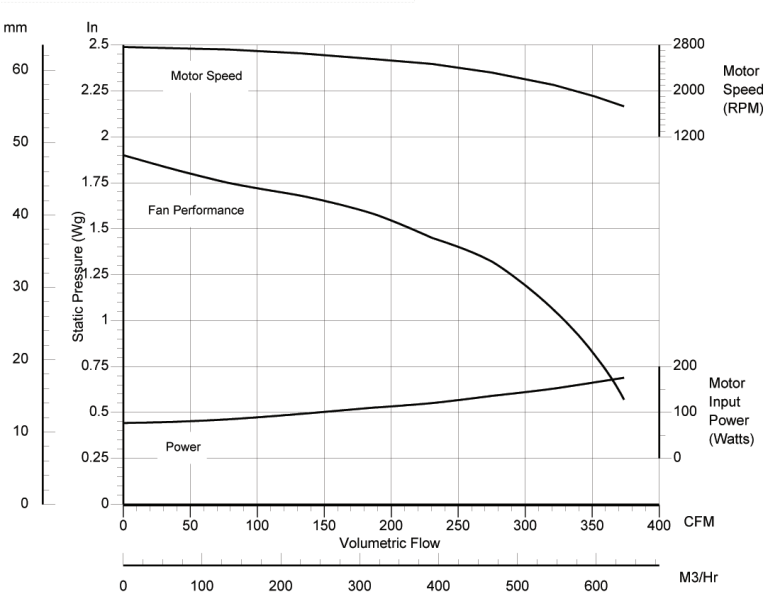
Double Inlet Centrifugal Fan

General Characteristics:

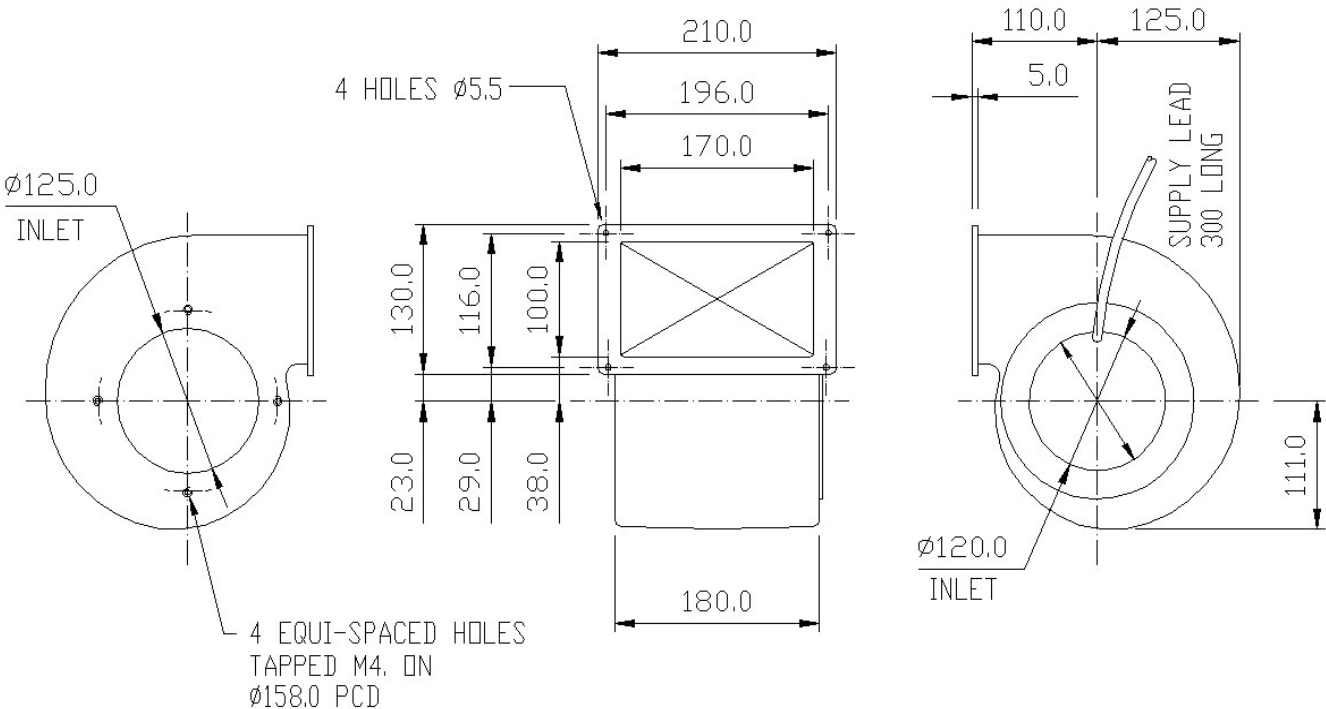


[Please note - image above may not be representative of the unit supplied]

Motor type:	External rotor motor / shaded pole induction IP44
Nominal supply:	230V 1Ph 50/60Hz 115V 1Ph 50/60Hz
Ancillaries:	Inlet & discharge guards
Materials:	Fancase - cast aluminium LM6 Impeller - galvanised sheet steel
Finishes:	Unpainted or stove enamel as std (black)
Mounting options:	Inlet & discharge drillings
Noise levels:	58dB(A) Free Air, 1 metre
Weight:	6.0Kg / 13.2Lbs



Outline dimensions:



Please note (1) - all drawings measurements are in millimeters (mm)
Please note (2) - above technical specifications are subject to change

AIR CONTROL INDUSTRIES LTD

Weycroft Avenue, Millwey Industrial Estate,
Axminster, Devon, EX13 5HU

t: +44(0)1297 529242 f: +44(0)1297 529241

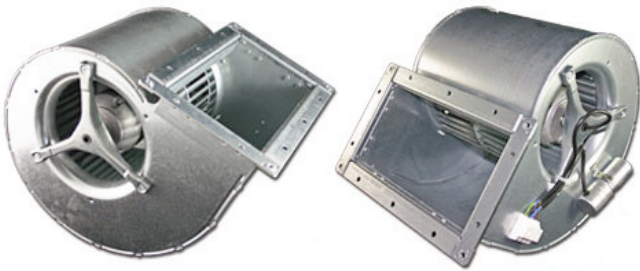
e: sales@aircontrolindustries.com

w: www.aircontrolindustries.com

Slimline Fan VBW7/3

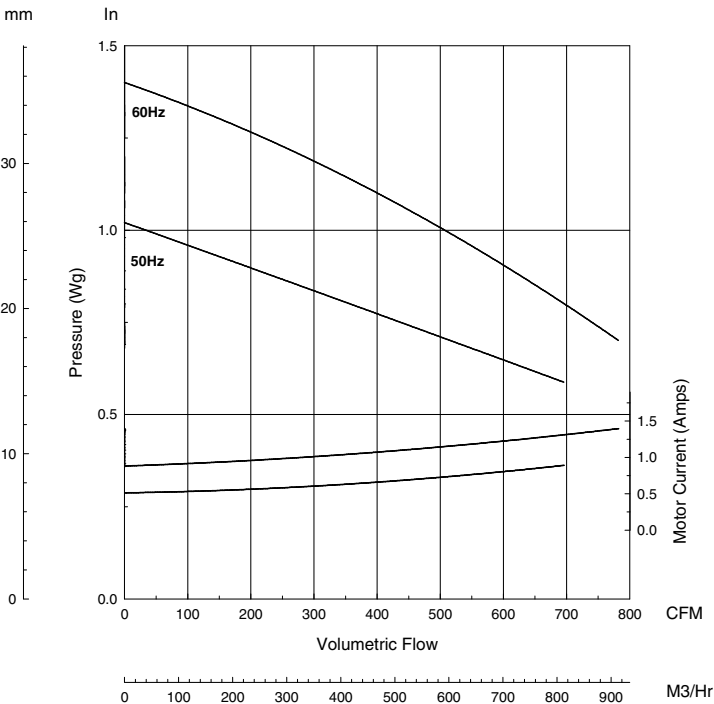
Double Inlet Centrifugal Fan

General Characteristics:

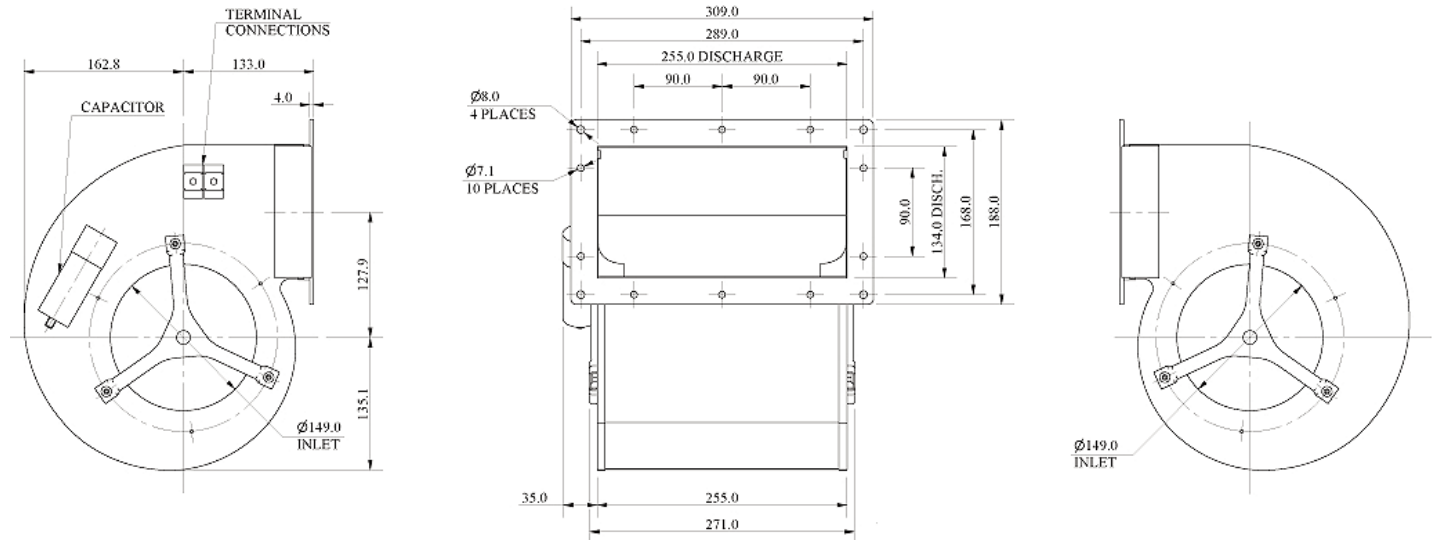


[Please note - image above may not be representative of the unit supplied]

Motor type:	External rotor motor IP44
Nominal supply:	230V 1Ph 50/60Hz
Options:	-
Materials:	Fancase - galvanised sheet steel Impeller - galvanised sheet steel
Finishes:	-
Mounting options:	Inlet & discharge drillings
Noise levels:	65dB(A) Free Air, 1 metre
Weight:	11Kg / 24.25Lbs



Outline dimensions:



Please note (1) - all drawings measurements are in millimeters (mm)

Please note (2) - above technical specifications are subject to change

Slimline Fans



Air Control Industries

Please note (1) - all drawings measurements are in millimeters (mm)
Please note (2) - above technical specifications are subject to change

AIR CONTROL INDUSTRIES LTD
Weycroft Avenue, Millwey Industrial Estate
Axminster, Devon, EX13 5HU
t: 0845 5000 501 f: 0845 5000 502
e: sales@aircontrolindustries.com
w: www.aircontrolindustries.com

AIR CONTROL INDUSTRIES INC
76 Augusta Rockland Road
Windsor, Maine, ME 04363
t: 207 445 2518 f: 207 445 2497
e: aciinc@aircontrolindustries.com