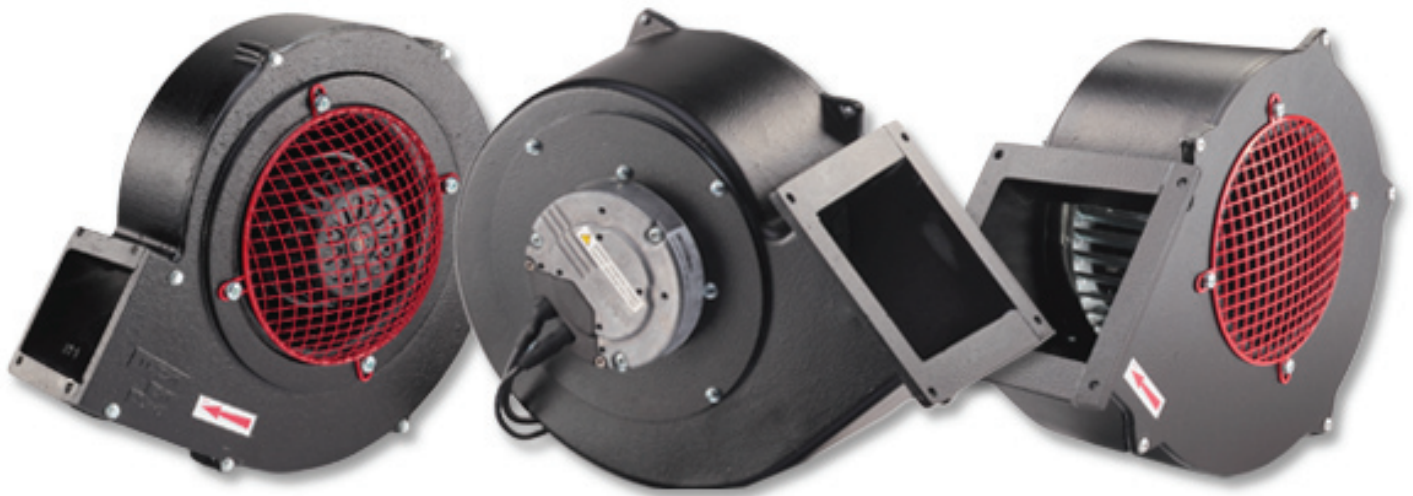


QB EC Fans

Energy efficient and environmentally friendly fans



Key Performance Figures:

- Flow rates up to 1400m³/hr (824CFM)
- Pressures up to 3.75in.Swg (933Pa)
- Intelligent motor driven impellers for closed loop control
- Superior operating efficiency up to 85% for single phase motors
- Can be directly set-up to respond to heat, pressure and humidity inputs via relevant sensors
- Compact and quiet
- Long service life due to small heat losses
- Easy to control with 0-10V DC or PWM signal
- All control and protection electronics are integrated in the motor with easy connection

Typical Applications

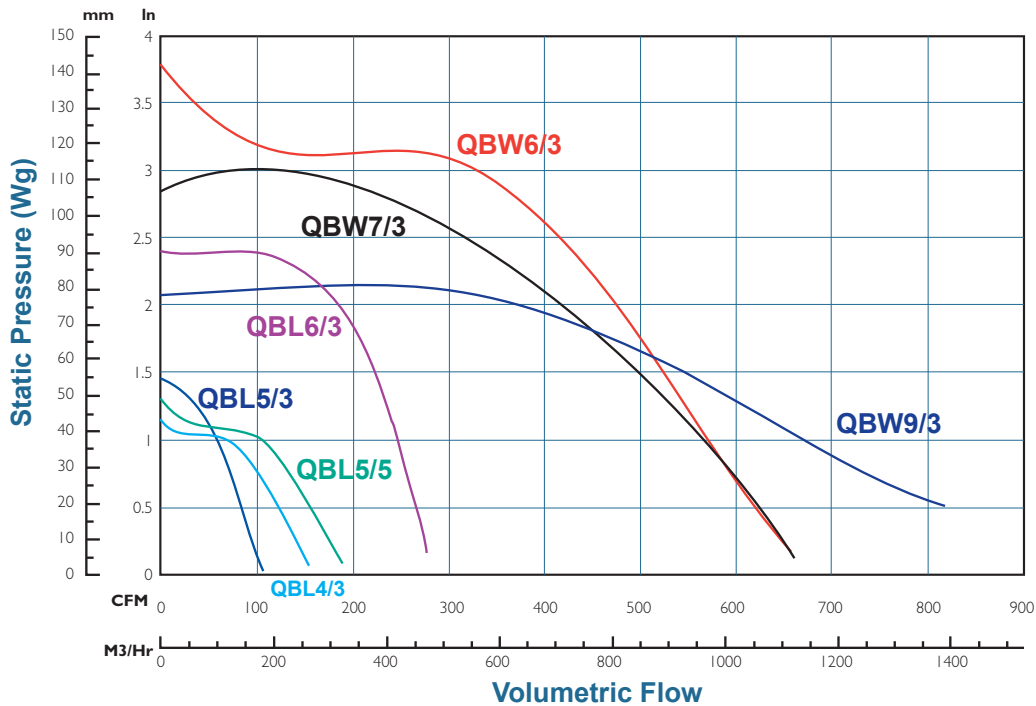
- Fume extraction
- Electronics cooling
- Safety cabinets/laminar flow
- Plastic extrusion machines
- UV lamp cooling
- Light industrial applications

QB EC Fans

Energy efficient and environmentally friendly fans

50Hz Performance Curves:

The illustrated curves are for 240V 1 Ph 50Hz and for selection purposes only. For full performance details please refer to the specific data sheets.



Further Advantages Include:

- Noise levels – have reduced noise levels in controlled operating conditions
- EC motors have longer service life due to lower winding temperatures resulting in lower wear and tear
- EC motors with integrated electronic control are easily configured to match speed to airflow demand. For the same air volume they consume distinctly less energy than AC motors
- EC motors have high energy-saving potential not only at full load, but especially at part load, where the loss of efficiency is much lower than with an asynchronous motor of equivalent output

Air Control Industries Ltd

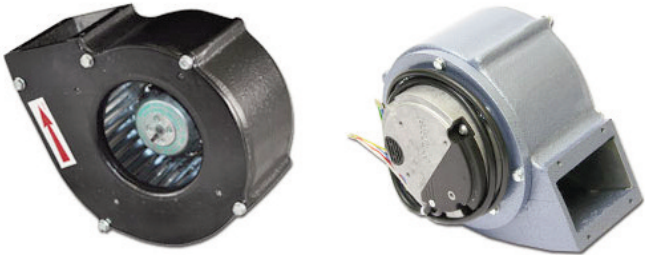
Weycroft Avenue, Millwey Rise Industrial Estate,
Axminster, Devon, EX13 5HU, United Kingdom
Tel: +44(0)1297 529242 Fax: +44(0)1297 529241
Email: sales@aircontrolindustries.com

www.aircontrolindustries.com

EC Fan QBL4/3

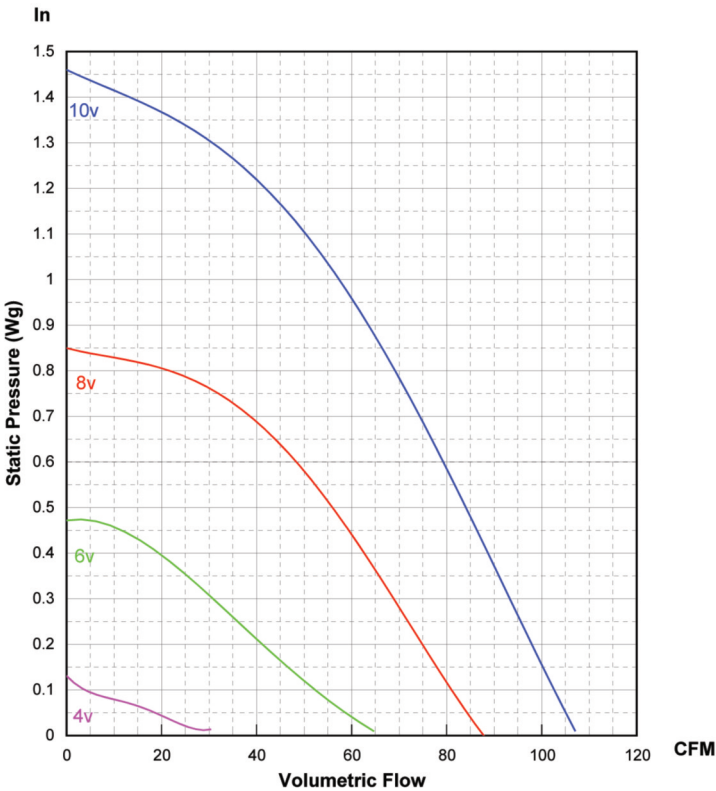
Single Inlet Centrifugal Fan

General Characteristics:

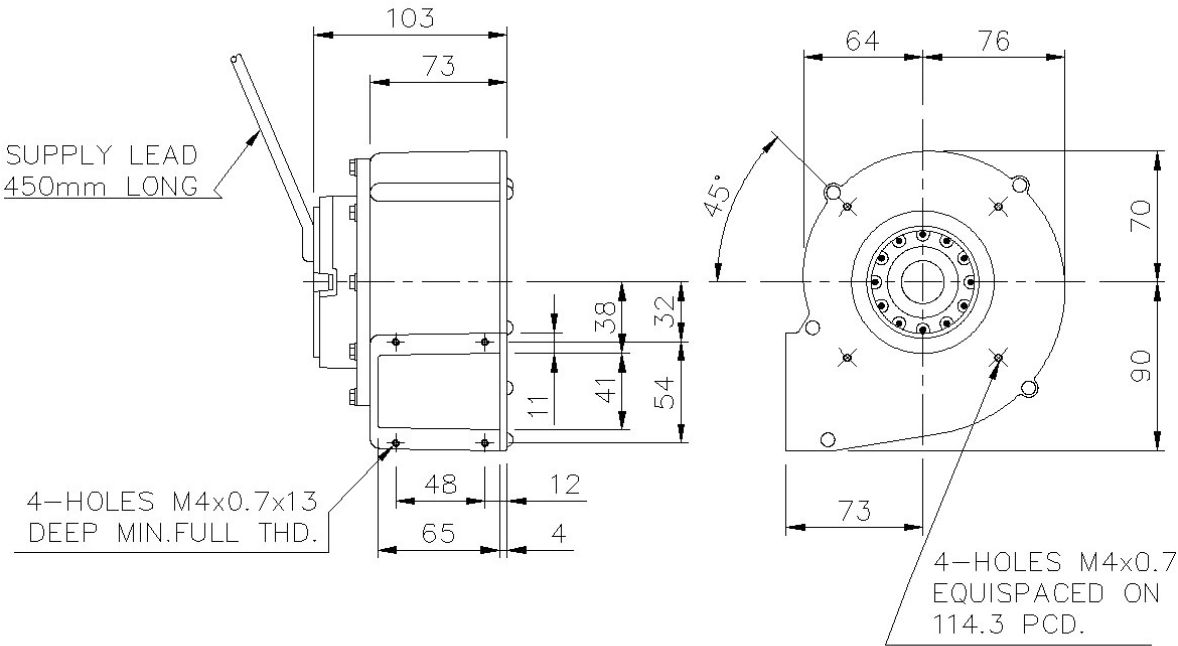


[Please note - image above may not be representative of the unit supplied]

Motor type:	EC (Electronically Commutated) motors IP44 Integrated speed control via PWM or 0-10V signal
Nominal supply:	230V 1Ph 50/60Hz 115V 1Ph 50/60Hz
Options:	Potentiometer 0-10V speed controller, inlet & discharge guards, spigots, inlet filters
Materials:	Fancase - cast aluminium LM6 Impeller - galvanised sheet steel
Finishes:	Unpainted or stove enamel as std (black)
Mounting options:	Inlet & discharge drillings
Noise levels:	67dB(A) Free Air, 1 metre
Weight:	2Kg/4.4Lbs



Outline dimensions:

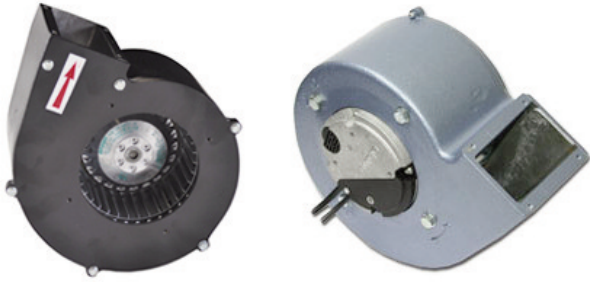


Please note (1) - all drawings measurements are in millimeters (mm)
Please note (2) - above technical specifications are subject to change

EC Fan QBL5/5

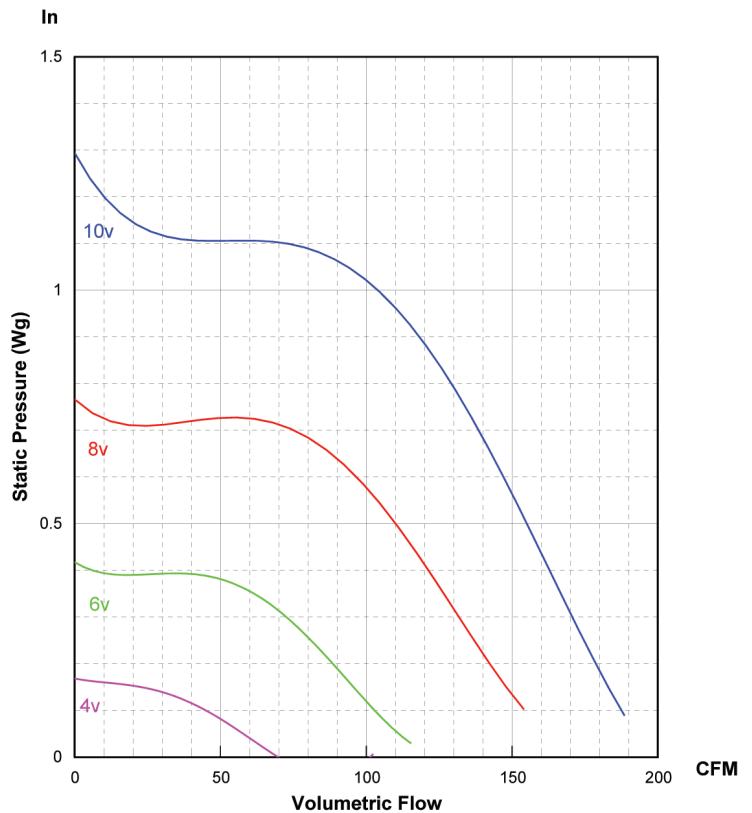
Single Inlet Centrifugal Fan

General Characteristics:

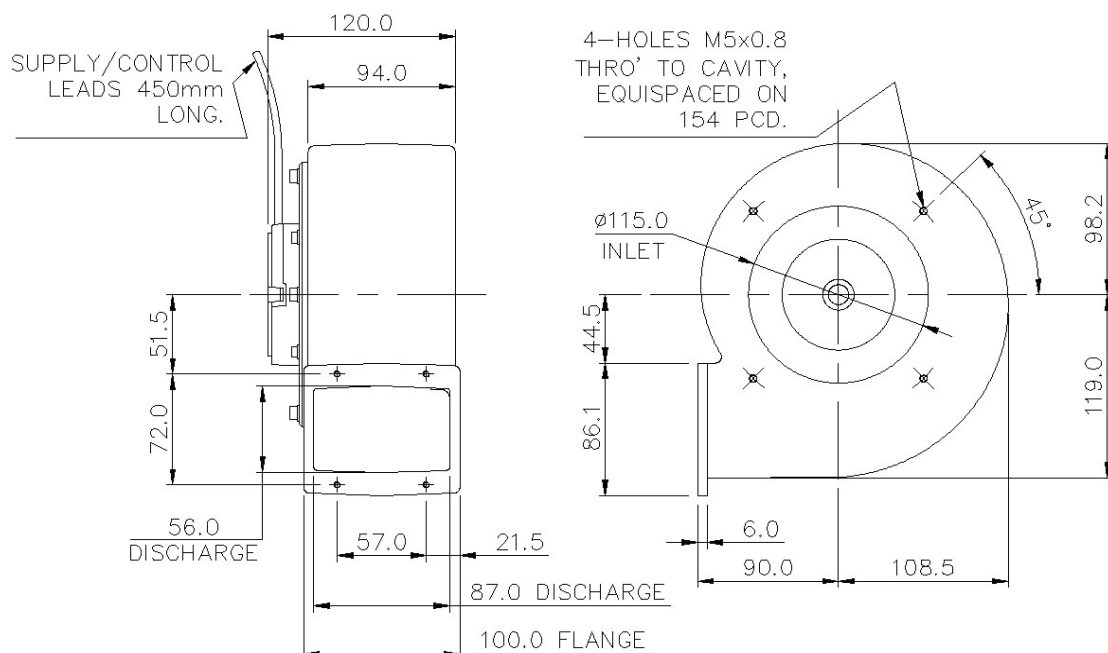


[Please note - image above may not be representative of the unit supplied]

Motor type:	EC (Electronically Commutated) motors IP44 Integrated speed control via PWM or 0-10V signal
Nominal supply:	230V 1Ph 50/60Hz 115V 1Ph 50/60Hz
Options:	Potentiometer 0-10V speed controller, inlet & discharge guards, spigots, inlet filters
Materials:	Fancase - cast aluminium LM6 Impeller - galvanised sheet steel
Finishes:	Unpainted or stove enamel as std (black)
Mounting options:	Inlet & discharge drillings
Noise levels:	67.5dB(A) Free Air, 1 metre
Weight:	2.75Kg/6.0Lbs



Outline dimensions:



Please note (1) - all drawings measurements are in millimeters (mm)
Please note (2) - above technical specifications are subject to change

AIR CONTROL INDUSTRIES LTD

Weycroft Avenue, Millwey Industrial Estate,

Axminster, Devon, EX13 5HU

1297 529242 f: +44(0)1297 529241

e: sales@aircontrolindustries.com

w: www.aircontrolindustries.com

EC Fan QBL6/3

Single Inlet Centrifugal Fan

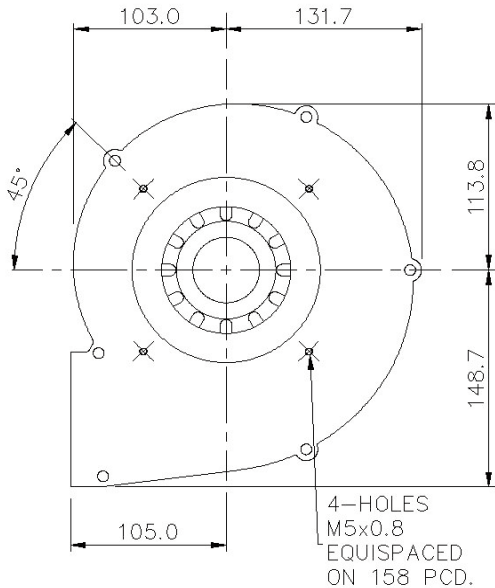
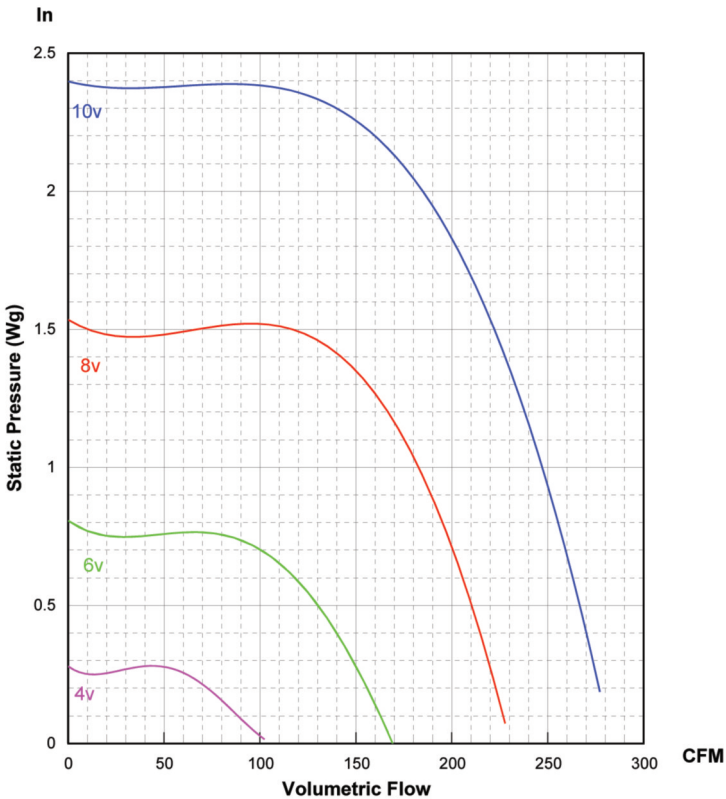
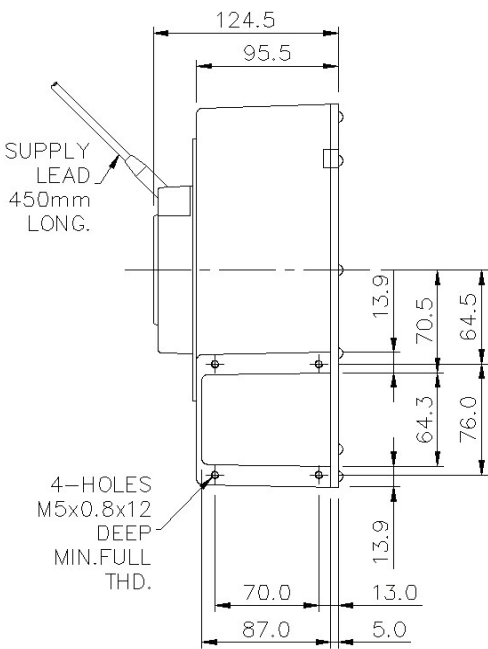
General Characteristics:



[Please note - image above may not be representative of the unit supplied]

Motor type:	EC (Electronically Commutated) motors IP44 Integrated speed control via PWM or 0-10V signal
Nominal supply:	230V 1Ph 50/60Hz 115V 1Ph 50/60Hz
Options:	Potentiometer 0-10V speed controller, inlet & discharge guards, spigots, inlet filters
Materials:	Fancase - cast aluminium LM6 Impeller - galvanised sheet steel
Finishes:	Unpainted or stove enamel as std (black)
Mounting options:	Inlet & discharge drillings
Noise levels:	77.2dB(A) Free Air, 1 metre
Weight:	4.0Kg/8.80Lbs

Outline dimensions:



Please note (1) - all drawings measurements are in millimeters (mm)

Please note (2) - above technical specifications are subject to change

AIR CONTROL INDUSTRIES LTD

Weycroft Avenue, Millwey Industrial Estate,

Axminster, Devon, EX13 5HU

t: +44(0)1297 529242 f: +44(0)1297 529241

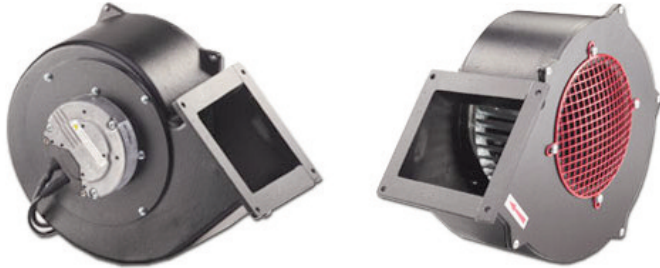
e: sales@aircontrolindustries.com

w: www.aircontrolindustries.com

EC Fan QBW6/3

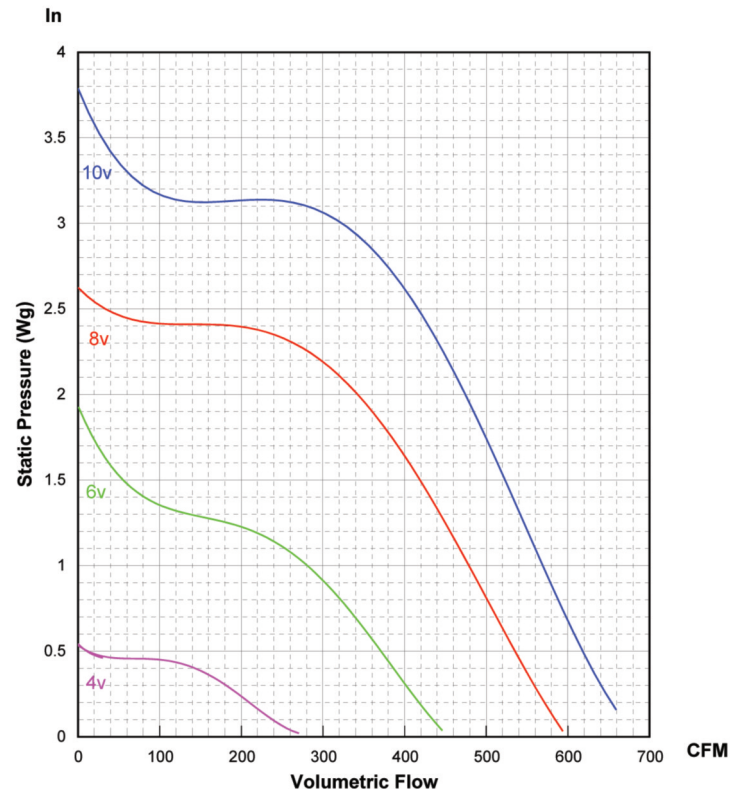
Double Inlet Centrifugal Fan

General Characteristics:

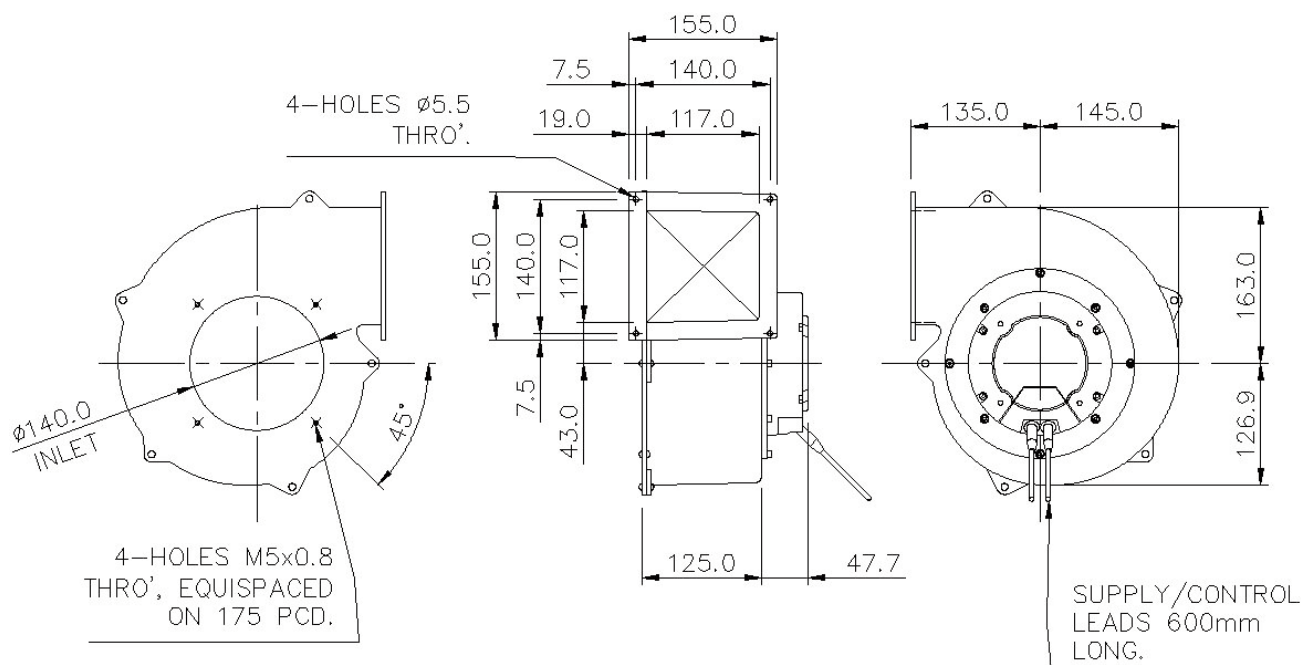


[Please note - image above may not be representative of the unit supplied]

Motor type:	EC (Electronically Commutated) motors IP54 Integrated speed control via PWM or 0-10V signal
Nominal supply:	230V 1Ph 50/60Hz
Options:	Potentiometer 0-10V speed controller, inlet & discharge guards, spigots, inlet filters
Materials:	Fancase - cast aluminium LM6 Impeller - galvanised sheet steel
Finishes:	Unpainted or stove enamel as std (black)
Mounting options:	Inlet & discharge drillings
Noise levels:	85.2dB(A) Free Air, 1 metre
Weight:	5.0Kg/11.0Lbs



Outline dimensions:



Please note (1) - all drawings measurements are in millimeters (mm)
Please note (2) - above technical specifications are subject to change

AIR CONTROL INDUSTRIES LTD
Weycroft Avenue, Millwey Industrial Estate,
Axminster, Devon, EX13 5HU
t: +44(0)1297 529242 f: +44(0)1297 529241
e: sales@aircontrolindustries.com
w: www.aircontrolindustries.com

EC Fan QBW7/3

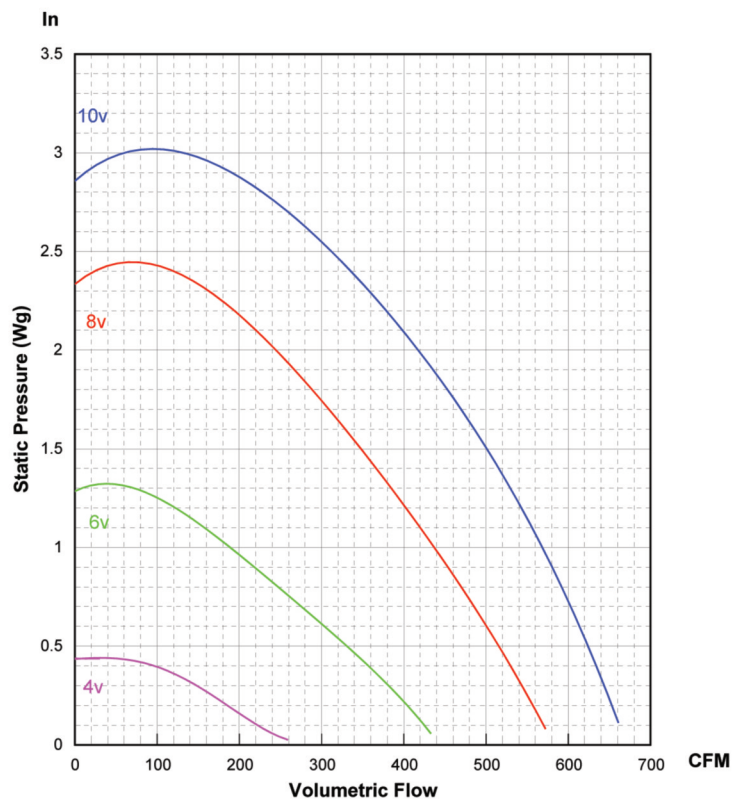
Single Inlet Centrifugal Fan

General Characteristics:

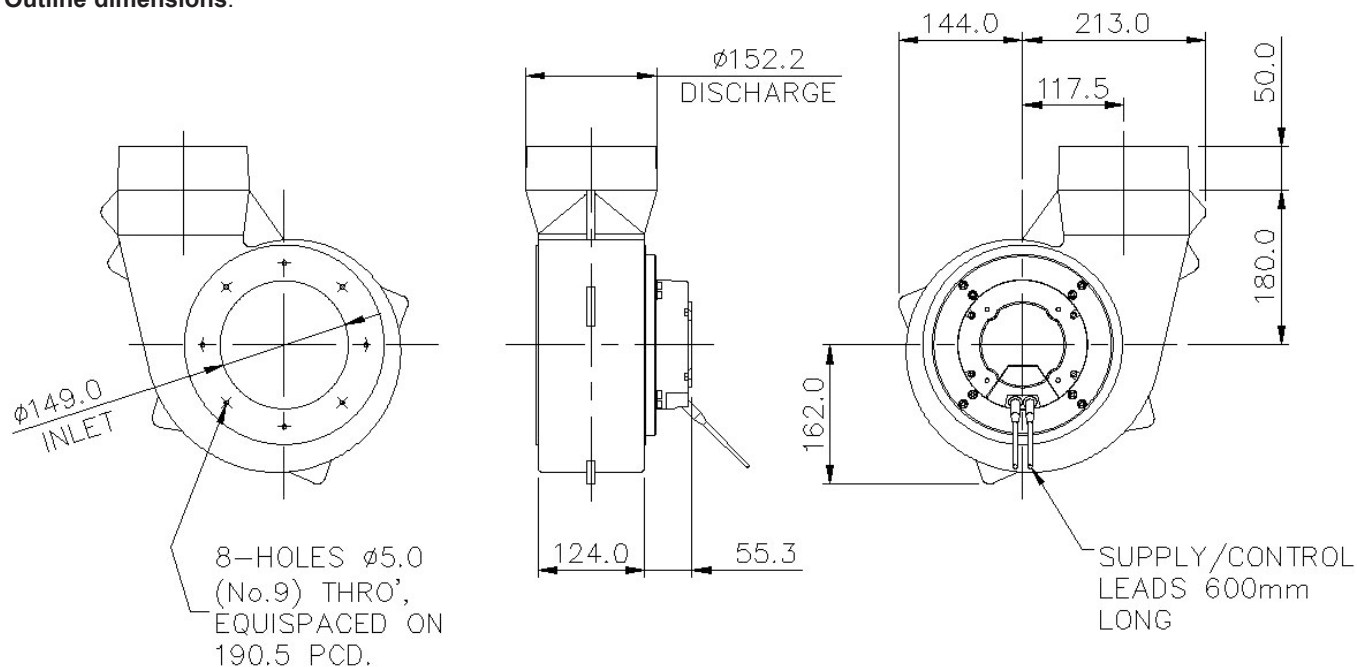


[Please note - image above may not be representative of the unit supplied]

Motor type:	EC (Electronically Commutated) motors. IP44 Integrated speed control via PWM or 0-10V signal
Nominal supply:	230V 1Ph 50/60Hz 115V 1Ph 50/60Hz
Options:	Potentiometer 0-10V speed controller, inlet & discharge guards, spigots, inlet filters
Materials:	Fancase - cast aluminium LM6 Impeller - galvanised sheet steel
Finishes:	Unpainted or stove enamel as std (black)
Mounting options:	Inlet & discharge drillings
Noise levels:	79.9dB(A) Free Air, 1 metre
Weight:	8.0Kg/17.6Lbs



Outline dimensions:



Please note (1) - all drawings measurements are in millimeters (mm)
Please note (2) - above technical specifications are subject to change

EC Fan QBW9/3

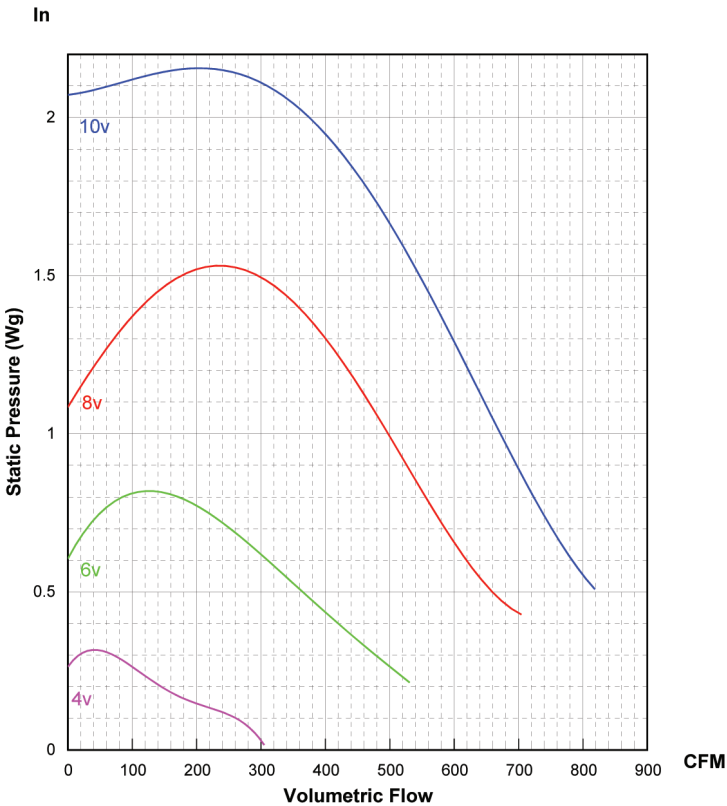
Single Inlet Centrifugal Fan

General Characteristics:

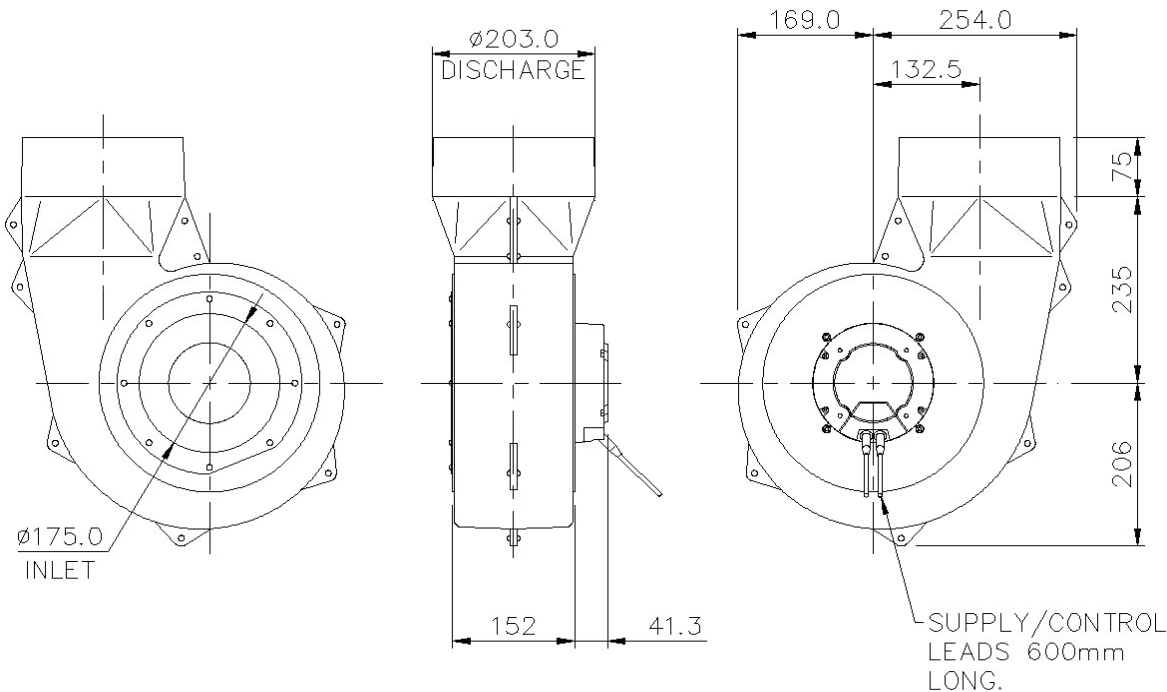


[Please note - image above may not be representative of the unit supplied]

Motor type:	EC (Electronically Commutated) motors IP44 Integrated speed control via PWM or 0-10V signal
Nominal supply:	230V 1Ph 50/60Hz
Options:	Potentiometer 0-10V speed controller, inlet & discharge guards, spigots, inlet filters
Materials:	Fancase - cast aluminium LM6 Impeller - galvanised sheet steel
Finishes:	Unpainted or stove enamel as std (black)
Mounting options:	Inlet & discharge drillings
Noise levels:	81.4dB(A) Free Air, 1 metre
Weight:	12.5Kg/27.6Lbs



Outline dimensions:



Please note (1) - all drawings measurements are in millimeters (mm)

Please note (2) - above technical specifications are subject to change

AIR CONTROL INDUSTRIES LTD

Weycroft Avenue, Millwey Industrial Estate,

Axminster, Devon, EX13 5HU

t: +44(0)1297 529242 f: +44(0)1297 529241

e: sales@aircontrolindustries.com

w: www.aircontrolindustries.com

EC Fans